

TRAVEL TRAILERS BY DUTCHMEN

ASPEN TRAIL



Introducing the new
ASPEN TRAIL LE



Dutchmen[®]

Legendary Innovation. Trailblazing Value.



**INDUSTRY
LEADING**

82"
**CEILING
HEIGHT**

(72" INSIDE
SLIDE ROOMS)

A STANDING OVATION

Featuring an impressive 82" interior height (6-ft. in slide room), getting around your trailer isn't an issue, it's figuring out what to do with all your indoor space.

GO ON THE JOURNEY OF A LIFETIME WITH THE ASPEN TRAIL

With a name that reminds you of beautiful mountain vistas and once-in-a-lifetime excursions, the Aspen Trail is one travel trailer that lives up to its name, then exceeds all expectations.

With the Aspen Trail, you'll journey with wall-to-wall interior features, like an undermount farmstyle sink, 3 burner range with oven, high output furnace, real maple hardwood doors and drawers, and 82" interior ceiling height. Plus, you'll have peace of mind in any location with mega pass-thru storage that has oversized baggage doors on both sides, a heated and enclosed underbelly, and seamless one piece roof. The only thing the Aspen Trail can't do is plan your next adventure... but it can try.



AN EXPANSIVE AWNING

Coming standard with a power awning with LED lights, the Aspen Trail lets you stay close to Mother Nature whether it's rain or shine.

2480RBS

2910BHS



FRONT TO BACK FREEDOM

Every inch of the Aspen Trail has been designed for full-featured living, from the amenity-rich kitchen area with farm-style sink and cover, to the ample amounts of additional storage space and radius overhead cabinets for keeping essentials close at hand.

1. ROOM TO STRETCH

The bedroom features wardrobe storage with an overhead shelf and reading lights, while delivering travelers with a 60x80 Residential Queen Everdream Mattress.

2. SLEEPING SPACE

Select Aspen Trail bunk bed floorplans are configured to have extra seating areas, transforming the space from a standard bunkhouse to a game room.

3. MORE STORAGE

Oversized entertainment centers keep plenty of movies, books, and anything else you want to take with you on the road.

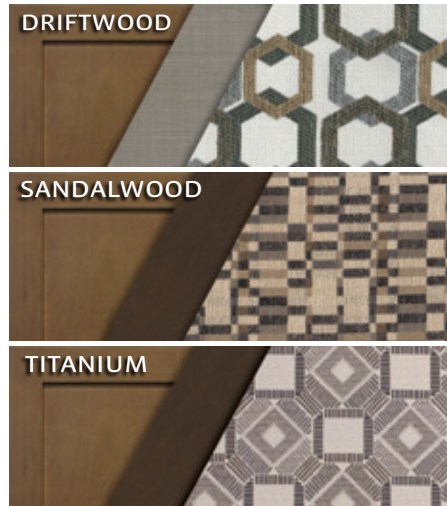
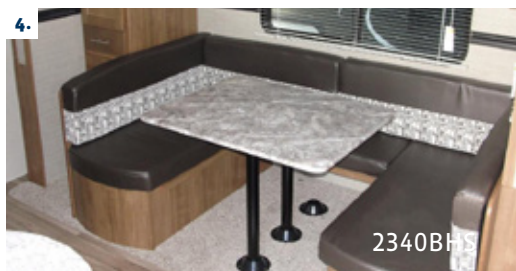


4. CONVERTIBLE DINETTE

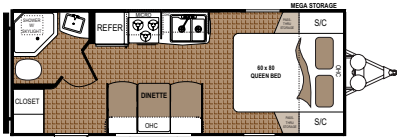
With the option to set up as straight or U-shaped, the industry-leading convertible dinette comfortably sits a group of adults as well as a family. At night, arrange the cushions into a bed to accommodate extra sleeping campers.

5. TAKE IT OUTSIDE

Enjoy the pleasure of cooking outdoors while entertaining your neighbors with the convenient outdoor kitchen on select Aspen Trail floorplans.

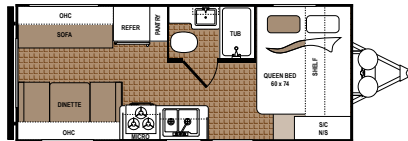


ASPEN TRAIL FLOORPLANS



ASPEN TRAIL | 1900RB

Ext. Length: 24' 8" Ext. Height: 10' 8"
Average Shipping Weight: 4,107 Sleeps: 2-3



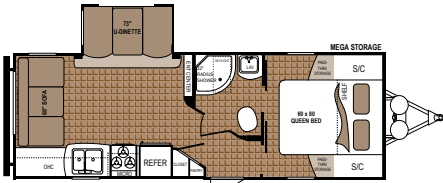
ASPEN TRAIL | 1930RDWE*

Ext. Length: 22' 11" Ext. Height: 10' 8"
Average Shipping Weight: 4,183 Sleeps: 3-4



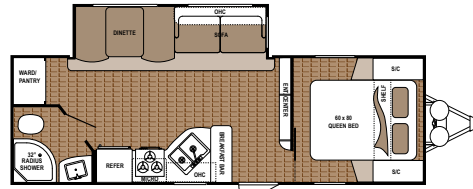
ASPEN TRAIL | 2050QBWE*

Ext. Length: 24' 10" Ext. Height: 10' 8"
Average Shipping Weight: 4,307 Sleeps: 3-4



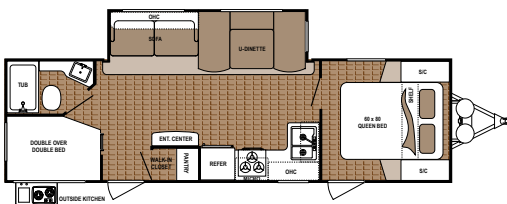
ASPEN TRAIL | 2460RLS

Ext. Length: 28' 3" Ext. Height: 11' 4"
Average Shipping Weight: 5,514 Sleeps: 3-5



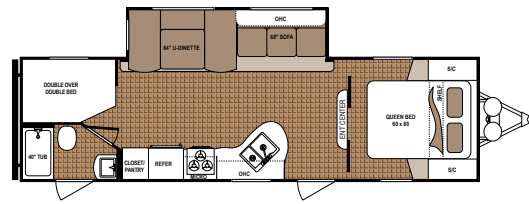
ASPEN TRAIL | 2480RBS

Ext. Length: 28' 9" Ext. Height: 11' 3"
Average Shipping Weight: 5,842 Sleeps: 4-5



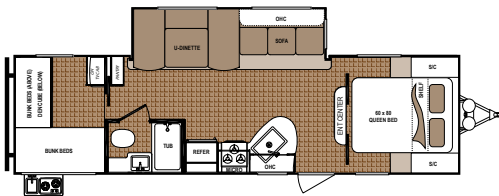
ASPEN TRAIL | 2790BHS

Ext. Length: 31' 10" Ext. Height: 11' 3"
Average Shipping Weight: 6,497 Sleeps: 6-8



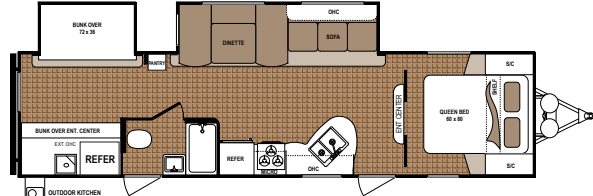
ASPEN TRAIL | 2810BHS

Ext. Length: 32' 2" Ext. Height: 11' 4"
Average Shipping Weight: 6,297 Sleeps: 6-8



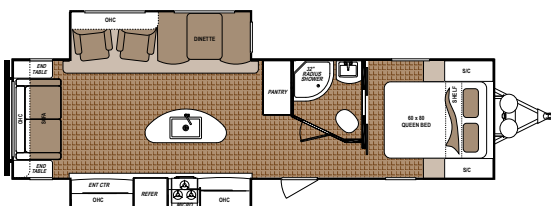
ASPEN TRAIL | 2910BHS

Ext. Length: 33' 2" Ext. Height: 11' 2"
Average Shipping Weight: 6,597 Sleeps: 6-8



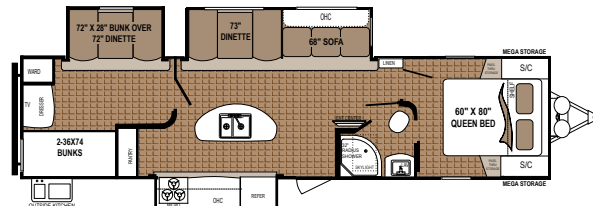
ASPEN TRAIL | 3010BHDS

Ext. Length: 35' 9" Ext. Height: 11' 7"
Average Shipping Weight: 7,588 Sleeps: 6-8



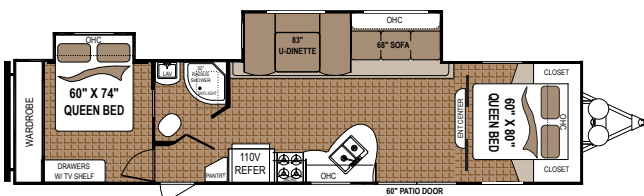
ASPEN TRAIL | 3070RLS

Ext. Length: 34' 11" Ext. Height: 11' 2"
Average Shipping Weight: 7,128 Sleeps: 4-6



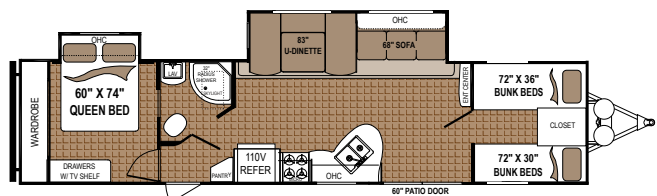
ASPEN TRAIL | 3100BHS

Ext. Length: 37' 6" Ext. Height: 11' 8"
Average Shipping Weight: 8,555 Sleeps: 8



ASPEN TRAIL | 3600QBDS

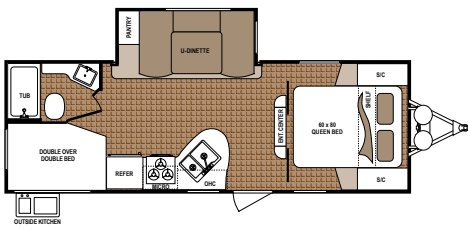
Ext. Length: 39' 9" Ext. Height: 11' 5"
Average Shipping Weight: 8,126 Sleeps: 8-10



ASPEN TRAIL | 3650BHDS

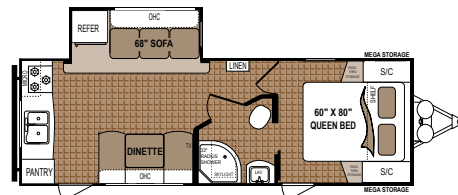
Ext. Length: 39' 9" Ext. Height: 11' 5"
Average Shipping Weight: 8,126 Sleeps: 8-10

*Models only available in the Western Region



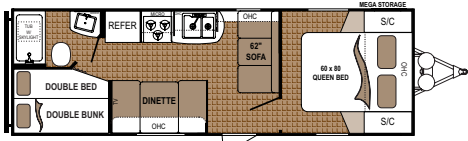
ASPEN TRAIL 2340BHs

Ext. Length: 27' 2" Ext. Height: 11' 4"
Average Shipping Weight: 5,599 Sleeps: 3-4



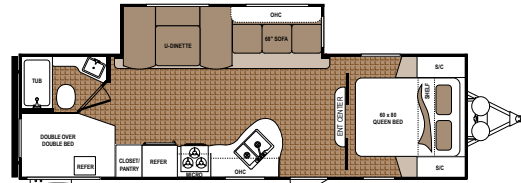
ASPEN TRAIL | 2390RKS

Ext. Length: 27' 2" Ext. Height: 11' 4"
Average Shipping Weight: 5,600 Sleeps: 3-4



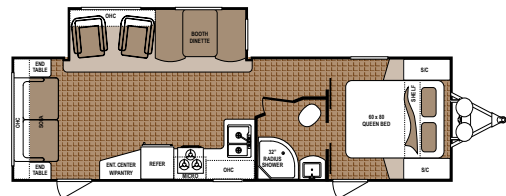
ASPEN TRAIL | 2710BH

Ext. Length: 28' 7" Ext. Height: 10' 7"
Average Shipping Weight: 4,517 Sleeps: 4-6



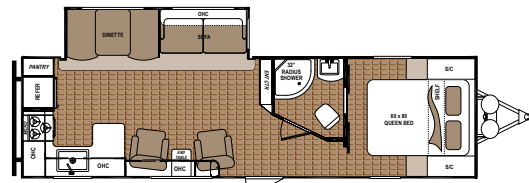
ASPEN TRAIL | 2750BHs

Ext. Length: 31' 4" Ext. Height: 11' 3"
Average Shipping Weight: 6,264 Sleeps: 6-8



ASPEN TRAIL 2860RLS

Ext. Length: 32' 6" Ext. Height: 11' 3"
Average Shipping Weight: 6,450 Sleeps: 4-5



ASPEN TRAIL | 2880RKS

Ext. Length: 32' 11" Ext. Height: 11' 3"
Average Shipping Weight: 6,510 Sleeps: 4-6

STANDARDS AND OPTIONS ASPEN TRAIL

MANDATORY OPTIONS

Aspen Trail Upgrade Package

ASPEN TRAIL UPGRADE PACKAGE

Aerodynamic Front Profile
LED Interior Lighting
Aspen Trail Central Command Center
Bluetooth Stereo w/CD/DVD/Aux
Full Extension, Roller Ball Bearing Drawer Guides
Maple Hardwood Cabinet Doors
Laundry Chute (Where Applicable)
60x80 Residential Queen Everdream Mattress
Upgraded Beaufloor Wood Plank Lino
Seamless Thermofoil Countertops

INTERIOR STANDARD FEATURES

3 Burner Range w/Oven
6-cu. ft. Gas/Electric Refrigerator
6-gal. Gas/Electric Water Heater w/DSI
12V 55-amp Converter
Undermount Kitchen Sink
82" Interior Height, 6 ft. Ceiling in Slide Room
8,000-BTU Non-Ducted Air (1700 & 1900)
13,500-BTU Ducted Air (n/a 1700 & 1900)
Bath Skylight

Bathtub Exhaust Fan
Bedsread
Black Refrigerator Insert
Cable TV Hookup w/Booster
Foot Flush Toilet
High Rise Faucet
High Output Furnace
Microwave
Radius Overhead Cabinets
Range Hood w/Light and Exhaust Fan
Shower/Tub Surround
Water Heater Bypass

EXTERIOR STANDARD FEATURES

Diamond Plate Rock Guard
Digital TV Antenna
Easy Lube Axles
Extended Long Rain Gutters
Front and Rear Stabilizing Jacks
Heated and Enclosed Underbelly
Manual Awning
Mega Pass-Thru Storage Compartment
Power Cord
Radial Tires
Seamless One Piece Roof
Tinted Safety Glass Windows
Triple Entry Steps (Deep Slides)
Two 20-lb. LP Bottles w/Cover

Two Exterior Speakers
Walk-On Roof

OPTIONS

14" Aluminum Wheels (Smaller Models)
15" Aluminum Wheels (Larger Models)
29" LCD TV
15,000-BTU A/C IPO 13.5-BTU A/C
2nd 13.5-BTU Non-Ducted Bedroom A/C (Select Models Only)
2nd A/C Prep w/50-amp Service (Select Models Only)
Electric Front & Rear Stabilizer Jacks
Front Queen Bed IPO Bunks (3600 Only)
Power Awning w/LED Lights
Power Tongue Jack w/Docking Light
Spare Tire w/Cover
Tri-Fold Hide-A-Bed IPO Flip Sofa (Select Models Only)
Two 30-lb. LP Bottles w/Cover
Outside Shower

CODES & SEALS

CSA Construction and Seal
RVIA Seal
State Seal (where applicable)
Winterization

STANDARDS AND OPTIONS ASPEN TRAIL LE SERIES

ASPEN TRAIL LE PACKAGE

60x80 Residential Queen Bed
82" Interior Height
6' Tall Flush Floor Slideouts (26BH & 31BH Only)
LED Interior Lighting
Front Diamond Plate Protection
Tinted Safety Glass Windows
Four Stabilizer Jacks
Easy Lube Axles
Double Entrance Step
30-amp Power Cord
120V Exterior Outlet
35-amp Converter
Dual 20-lb. LP Bottle
Fire Extinguisher
LP/Carbon Monoxide/Smoke Detectors
Systems Monitor Panel
13.5-BTU A/C
6-gal. Gas Water Heater

Water Heater Bypass Kit
High Output Furnace w/Auto Ignition
6-cu. ft. Refrigerator
Microwave
3 Burner Range Top
Galley Sink w/High Rise Faucet
Full Extension Drawer Guides Throughout
Shower Curtain
Foot Pedal Flush Toilet
Mini Blinds Throughout
Soft Valance Tops Only
Upgraded Residential Flooring
AM/FM/CD/MP3 w/Two Interior & Two Exterior Speakers
TV Antenna w/Booster
Winterization

OPTIONS

15k A/C in place of 13.5k
Spare Tire



PEACE OF MIND

At Dutchmen, quality is our standard. Every single Dutchmen RV that comes off the line receives its own 253-point pre-delivery inspection and is backed by the industry's best 3-year limited structural warranty.

DISCLAIMER: Product information is as accurate as possible as of the date of brochure publication. All features, floorplans and specifications in this brochure are subject to change without notice. Please consult Dutchmen's website at www.Dutchmen.com for current product information and specifications. Tow Vehicle Disclaimer. CAUTION: Owners of Dutchmen recreational vehicles are solely responsible for the selection and proper use of tow vehicles. All customers should consult with a motor vehicle manufacturer or their dealer concerning the purchase and use of suitable tow vehicles for Dutchmen products. Dutchmen disclaims any liability or damages suffered as a result of the selection, operation, use or misuse of a tow vehicle. DUTCHMEN'S LIMITED WARRANTY DOES NOT COVER DAMAGE TO THE RECREATIONAL VEHICLE OR THE TOW VEHICLE AS A RESULT OF THE SELECTION, OPERATION, USE OR MISUSE OF THE TOW VEHICLE. REFERENCE DUTCHMEN MANUFACTURING OWNERS MANUAL FOR LIMITED WARRANTY DETAILS.



31BH

AN INDOOR OPEN SPACE

The LE features 82" of interior ceiling height to give you the room you need to enjoy all of the amenities packed into this lightweight travel trailer.

**TRAVEL LIGHT WITH THE NEW
ASPEN
TRAIL LE**

The Aspen Trail LE is light on travel, but heavy on features. Dutchmen travelers will find that they have everything they need for extended outings, including luxuries typically reserved for heavy-duty trailers, such as a 6-cu. ft. refrigerator, a 60x80 residential queen bed, LED interior lighting and upgraded residential flooring.



31BH

Mealtime is made easy with the kitchen's 3 burner range top, microwave and galley sink.



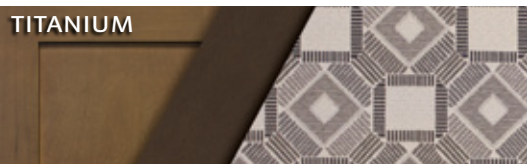
31BH

Maximize storage in the LE entertainment centers and oversized cabinets.



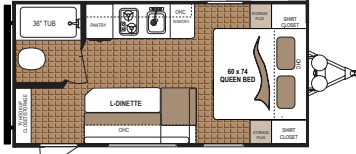
25BH

Bunkhouse models allow enough space for the whole family.

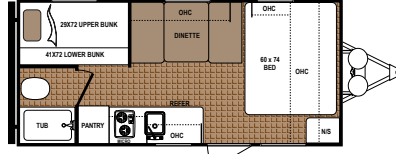


TITANIUM

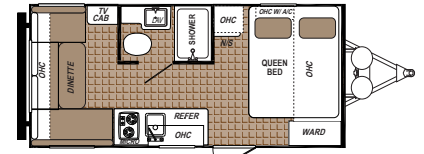
ASPEN TRAIL LE FLOORPLANS



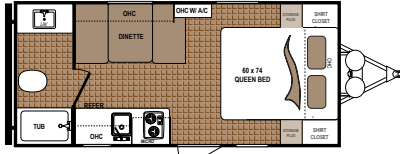
ASPEN TRAIL LE | 1600RB
 Ext. Length: 21' 5" Ext. Height: 8' 11"
 Average Shipping Weight: 3,125 Sleeps: 2-4



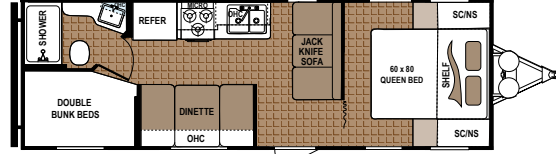
ASPEN TRAIL LE | 1700BH
 Ext. Length: 21' 5" Ext. Height: 8' 8"
 Average Shipping Weight: 3,199 Sleeps: 4-5



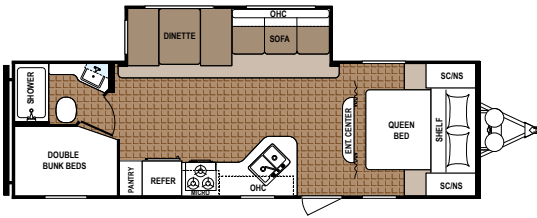
ASPEN TRAIL LE | 1750RD
 Ext. Length: 21' 5" Ext. Height: 8' 10"
 Average Shipping Weight: 3,136 Sleeps: 2-4



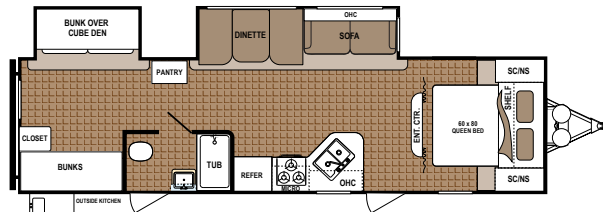
ASPEN TRAIL LE | 1800RB
 Ext. Length: 21' 8" Ext. Height: 8' 10"
 Average Shipping Weight: 3,044 Sleeps: 2-4



ASPEN TRAIL LE | 25BH
 Ext. Length: 28' 8" Ext. Height: 10' 6"
 Average Shipping Weight: 4,517 Sleeps: 6-8



ASPEN TRAIL LE | 26BH
 Ext. Length: 30' 8" Ext. Height: 11' 1"
 Average Shipping Weight: 5,636 Sleeps: 7-9



ASPEN TRAIL LE | 31BH
 Ext. Length: 35' 10" Ext. Height: 11' 3"
 Average Shipping Weight: 7,060 Sleeps: 7-8

ASPEN TRAIL / ASPEN TRAIL LE SPECIFICATIONS

MODEL	FLOORPLAN	DIMENSIONS			WEIGHTS (LBS.)			TANKS (GALS.)		
		*EXTERIOR TRAVEL LENGTH	EXTERIOR WIDTH	EXTERIOR HEIGHT (WITH A/C)	**AVERAGE SHIPPING WEIGHT	DRY HITCH WEIGHT	CARGO CARRYING CAPACITY	***FRESH WATER CAPACITY	GREY WATER CAPACITY	BLACK WATER CAPACITY
Aspen Trail	1900RB	24' 8"	96"	10' 8"	4,107	493	3,493	52	42	42
Aspen Trail	1930RDWE	22' 11"	96"	10' 8"	4,183	453	3,390	52	42	42
Aspen Trail	2050QBWE	24' 10"	96"	10' 8"	4,307	460	3,180	52	42	42
Aspen Trail	2340BHS	27' 4"	96"	11' 4"	5,599	609	1,959	52	42	42
Aspen Trail	2390RKS	27' 2"	96"	11' 4"	5,600	776	2,086	52	42	42
Aspen Trail	2460RLS	28' 3"	96"	11' 4"	5,514	552	2,086	52	42	42
Aspen Trail	2480RBS	28' 9"	96"	11' 4"	5,842	660	3,838	52	42	42
Aspen Trail	2710BH	28' 7"	96"	10' 7"	4,745	559	2,945	52	42	42
Aspen Trail	2750BHS	31' 4"	96"	11' 4"	6,264	669	3,392	52	42	42
Aspen Trail	2790BHS	31' 11"	96"	11' 4"	6,497	650	3,183	52	84	42
Aspen Trail	2810BHS	32' 2"	96"	11' 4"	6,297	819	3,383	52	42	42
Aspen Trail	2860RLS	32' 6"	96"	11' 4"	6,450	724	3,230	52	42	42
Aspen Trail	2880RKS	32' 11"	96"	11' 3"	6,510	656	3,168	52	84	42
Aspen Trail	2910BHS	33' 2"	96"	11' 2"	6,597	777	3,364	52	42	42
Aspen Trail	3010BHDS	35' 9"	96"	11' 7"	7,588	910	2,092	52	42	42
Aspen Trail	3070RLS	34' 11"	96"	11' 2"	7,128	948	2,286	52	42	42
Aspen Trail	3100BHS	37' 6"	96"	11' 8"	8,555	1,026	2,614	52	78	42
Aspen Trail	3600QBDS	39' 9"	96"	11' 5"	8,126	1,057	3,166	52	78	42
Aspen Trail	3650BHDS	39' 9"	96"	11' 5"	8,126	1,057	3,166	52	78	42
LE SERIES	1600RB	21' 5"	96"	8' 11"	3,125	346	725	27	28	28
LE SERIES	1700BH	21' 5"	96"	8' 8"	3,199	452	651	27	28	28
LE SERIES	1750RD	21' 8"	96"	8' 10"	3,136	450	678	27	28	28
LE SERIES	1800RB	21' 11"	96"	8' 10"	3,044	450	678	27	28	28
LE SERIES	25BH	28' 8"	96"	10' 6"	4,517	465	TBD	27	42	42
LE SERIES	26BH	30' 8"	96"	11' 1"	5,636	762	TBD	27	42	42
LE SERIES	31BH	35' 10"	96"	11' 3"	7,060	1,057	TBD	52	78	42

*Length is defined as the distance from the centerline of hitch pin/coupler to rear bumper of trailer. **Our weights represent how most units are built, inclusive of many commonly-ordered options. ***Fresh water capacity includes water heater capacity.

TRAILBLAZING VALUE



MORE STANDARD FEATURES MORE VALUE

Dutchmen RVs turn more heads on the lot and in the campground than any other. Why? While other manufacturers offer features as options, Dutchmen tends to make those same features standard. Call it “bang for the buck,” “more for your money,” or simply “more value.” **We’ve built a reputation for bringing RV owners more standard features for less money** for more than 25 years . . . and it’s a reputation we plan to keep.

THE INDUSTRY'S BEST WARRANTY

Every Dutchmen RV comes with our all-new 3-year limited structural warranty. Dutchmen owners can expect an entire extra two years of protection and peace of mind.



Dutchmen®

Legendary Innovation. Trailblazing Value.

300

STRONG

NATIONWIDE DEALER NETWORK

More than 300 Dutchmen dealers across North America and our industry-leading service center in Goshen, Indiana, combine for your peace of mind before, during and after the sale. Rest assured no matter where your travels take you, **the best-resourced RV manufacturing company in the world is behind you all the way.**

PO BOX 2000 • 2164 Caragana Court
Goshen, Indiana 46527 Sales: 574.537.0600
www.dutchmen.com

At Dutchmen, quality is our standard. **Every single Dutchmen RV that comes off the line receives its own pre-delivery inspection.** You won't find this commitment to quality anywhere else.



Scan this QR Code for the latest updates to floorplans and specs of Aspen Trail models.



www.dutchmen.com

Visit us online to see all of the Dutchmen brands, innovative models and spacious floorplans.

Your local dealer

From giving advice to servicing products, we consider our loyal dealers the best resource for learning about Dutchmen products.

ASP-DM0117-30k