

# Sunova

# WINNEBAGO



## Why Sunova?

- Powered patio awning with LED lighting and metal wrap
- Residential refrigerator with icemaker (36Z)
- Corian® galley countertops, sink covers, and decorative backplash
- One-piece fiberglass roof
- Versa easy-swivel driver's seat
- Available exterior entertainment center
- Available powered StudioLoft™ bed
- Motoraid supplemental hot water and heating system
- AM/FM/touch screen radio with CD/DVD player
- Dash workstation with USB cable connection
- Automatic hydraulic leveling jacks with 3-position controls



On the Cover: 36Z Ember Full-Body Paint

36Z Reflection with Honey Cherry Cabinetry

## Built for Fun and Adventure

Fun-loving adventurers, meet your fun-loving Class A coach: the Sunova®. Built to Winnebago's legendary quality standards, the newly-styled Sunova is packed with features that may have you wishing your trips would never end. Corian® countertops, Versa easy-swivel driver's seat, and MCD solar/blackout roller shades are as functional as they are beautiful. This year, the 36Z brings a new look to the Sunova

lineup with a bath-and-a-half floorplan and an available powered StudioLoft™ bed that adds sleeping space on demand. Each floorplan opens wide with three slideouts that offer plenty of living and entertainment options such as a retractable HDTV, Glide & Dine table, an available Rest Easy® sofa, and available Euro recliner. Don't miss another season of fun and adventure in your very own Sunova.

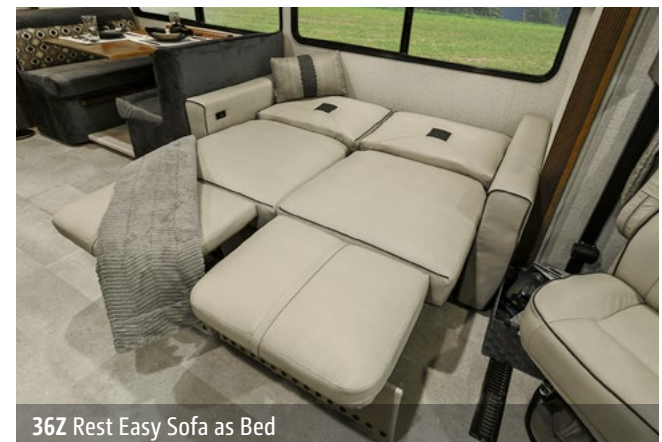


### Recognized Quality

The Recreation Vehicle Dealer Association annually rates RV manufacturers and awards the Quality Circle Award to manufacturers that provide exceptional products, service and support. Winnebago Industries is proud to be the only manufacturer that has received this award every year since its inception.



Three distinct Sunova floorplans give you a choice of furniture covered in soft Primera fabric, such as the Rest Easy Sofa in the 33C and 36Z and the inLounge™ with movable inTable™ in the 35G. Once you settle in, fire up the electric fireplace (NA 33C) and enjoy movie nights on the large HDTV. The powered StudioLoft bed, available on all models, drops down from the ceiling to turn the cab into a large sleeping space.





36Z Available StudioLoft Bed with Ladder



MCD Blackout Roller Shades



36Z BenchMark Dinette Storage



OnePlace Systems Monitor



36Z Retractable HDTV



36Z Fireplace



36Z BenchMark Dinette

Get cooking in a galley that features a 3-burner range top, microwave/convection oven, and Corian® solid-surface countertops with matching sink covers. A 4-door refrigerator/freezer in the 33C and 35G or 2-door residential refrigerator/freezer in the 36Z provides an abundance of cold storage.



 36Z Galley



36Z Pantry with Pull-Out Shelves



36Z 2-Door Residential Refrigerator/Freezer



3-Burner Range Top



Microwave/Convection Oven



36Z Bedroom

For maximum sleeping comfort, the Sunova offers a wide variety of king and queen mattress choices, including the Ideal Rest® Nouveau digital comfort control mattress. A powered bed on the 35G lets you raise the bed to watch the standard bedroom HDTV. The 36Z gives you the privacy of a master bath with a second mid-coach half-bath.



36Z Bedroom HDTV



36Z Wardrobe



36Z Master Bath



36Z Shower



36Z Guest Bath



Dash

Hit the road in a 6-way power-adjustable driver's seat with a soft and durable Primera covering. Both cab seats swivel to become part of the lounge, and a dash workstation flips out for the passenger. A 6" color touch screen controls both the dash stereo system and the Rearview Monitor System.



Radio with Available SiriusXM



Dash Workstation



MCD Solar/Blackout Powered Front Shade

Single-paddle latches on the exterior storage compartments hold secure and open easily. Enjoy all-new exterior styling while you stretch out beneath the powered patio awning with LED lighting and metal wrap. Add an exterior entertainment center with an HDTV to take your tailgate party to the next level.



Awning LED Lighting



Automatic Entrance Door Steps



36Z Powered Patio Awning



Exterior Storage Compartment



36Z Available Exterior Entertainment Center



Exterior Wash Station



Exterior Service Center



**Fiberglass Roof**

The crowned, one-piece fiberglass roof is backed by a 10-year limited parts-and-labor roof skin warranty.

**Rubber Can't Cut It**

Rubber roofs used by competitors can streak and degrade over time.

**Thermo-Panel® Sidewalls**

By layering fiberglass and high-density block foam insulation with welded aluminum support structures, we create some of the industry's strongest, most durable and lightweight sidewalls.

**E-Coating** An electrodeposition coating helps protect critical steel components.

**Embedded Steel** Metal substructures embedded into the sidewall provide solid attachment points to keep cabinets and appliances mounted securely in place.

**Solid Framework** Aluminum extruded in our own facility to our exacting standards creates an extremely strong and solid structural framework.

**Laser-Cut Tubing**

Precision laser cutters create precise joints in structural steel that are stronger and require less welding.



**Interlocking Joints**

Specially engineered interlocking joints connect the floor, sidewalls and roof where competitors often rely on simple screws to bear the weight.



**SUPER  
STRUCTURE**

BUILT TO LAST

Every coach—from our smallest Class C to our largest diesel-pusher model—is built to Winnebago's® legendary SuperStructure® construction standards. It's a process developed and refined over more than 50 years of building some of the strongest, most durable coaches in the industry.

**TESTING** Before rolling out of our factories, every coach undergoes an extensive 113-point inspection. Each coach also passes a high-pressure water test that simulates rain at a rate of 50-inches per hour to check for leaks. During the design process, our computer simulations, physical testing center, and rigorous test track ensure each model is built to last.



**DETAILS** At Winnebago, we treat the features you can't see with the same care as the ones you can. Look in the access panels of some of our competitors' coaches and you'll see loose insulation and wires haphazardly strewn about. Winnebago maintains a clean fit and finish throughout so your coach will last for the long haul.



**BUILT IN-HOUSE** We extrude our own aluminum. We rotocast our own plastic components. In fact, we manufacture most of our own parts so they are designed to fit the space, rather than fitting the space to an awkward off-the-shelf component size.



**SUPER  
STRUCTURE**  
BUILT TO LAST

Visit [BetterBuiltRVs.com](http://BetterBuiltRVs.com) to gain real insight into what goes into a Winnebago motorhome.

**TAKE A TOUR** We're proud of our processes, state-of-the-art facilities, and the people who make Winnebago number one. We invite you to visit our complex in Forest City, Iowa, for a firsthand look at the dedication and technology behind every motorhome we build.

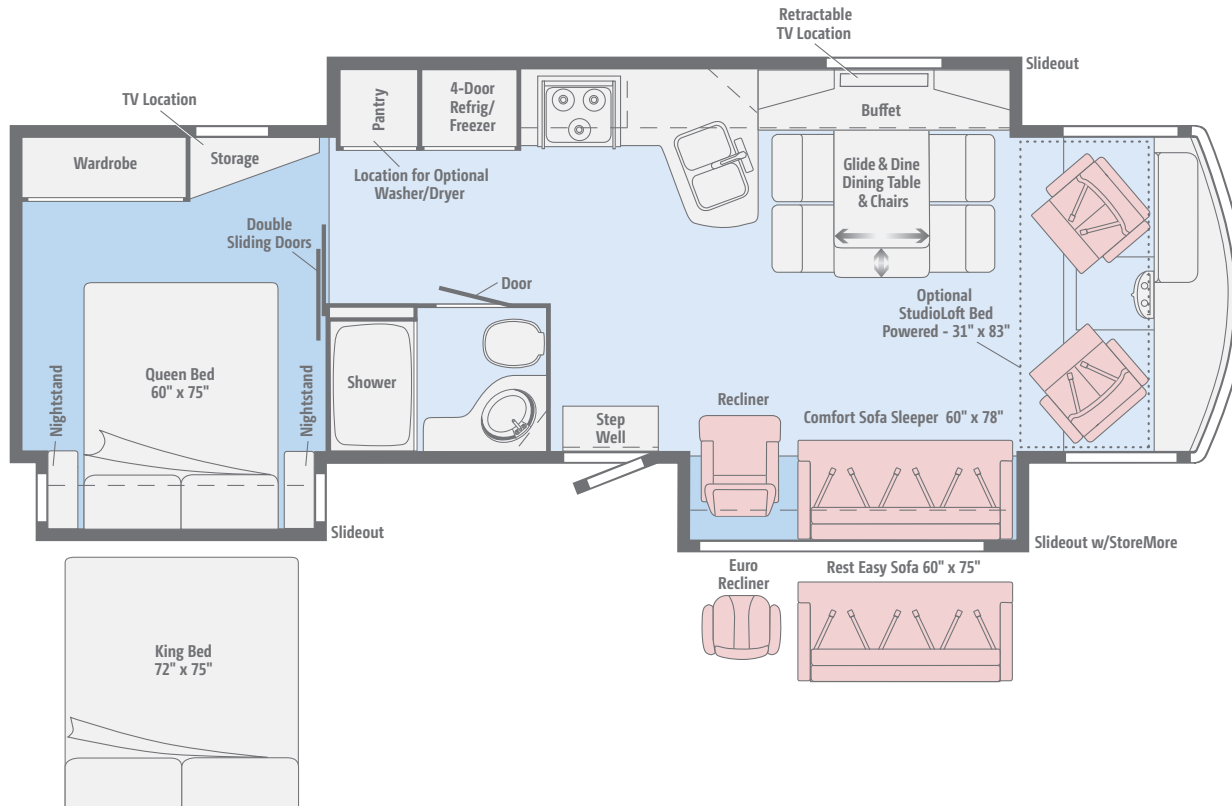
Call (641) 585-6936 or (800) 643-4892 or visit us online at [Winnebagolnd.com/company/visit](http://Winnebagolnd.com/company/visit) for more information.



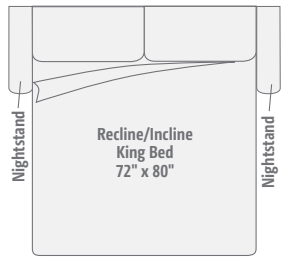
Click here to explore this floorplan's web page.

### 33C

Three slideouts and a mid-coach entry create a generous living space complete with the Comfort Sofa Sleeper, recliner, swivel cab seats, and the Glide & Dine dining table. Choose a large pantry or the available stacked washer and dryer.

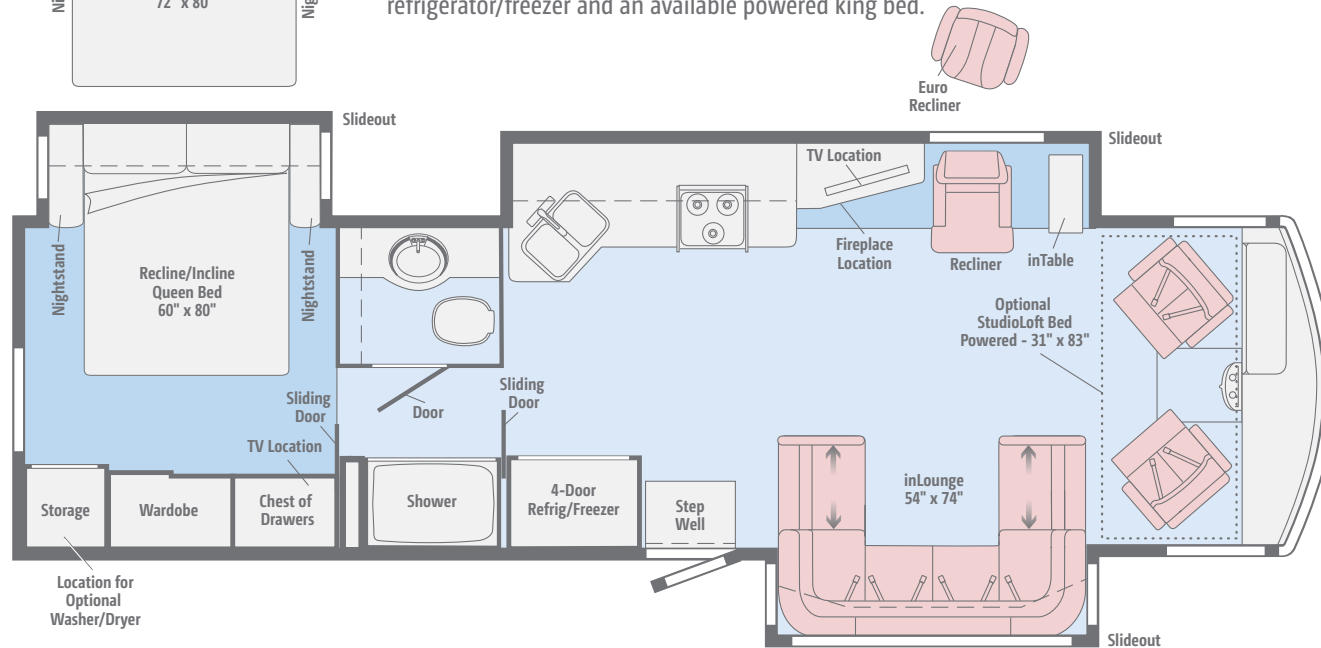


Click here to explore this floorplan's web page.



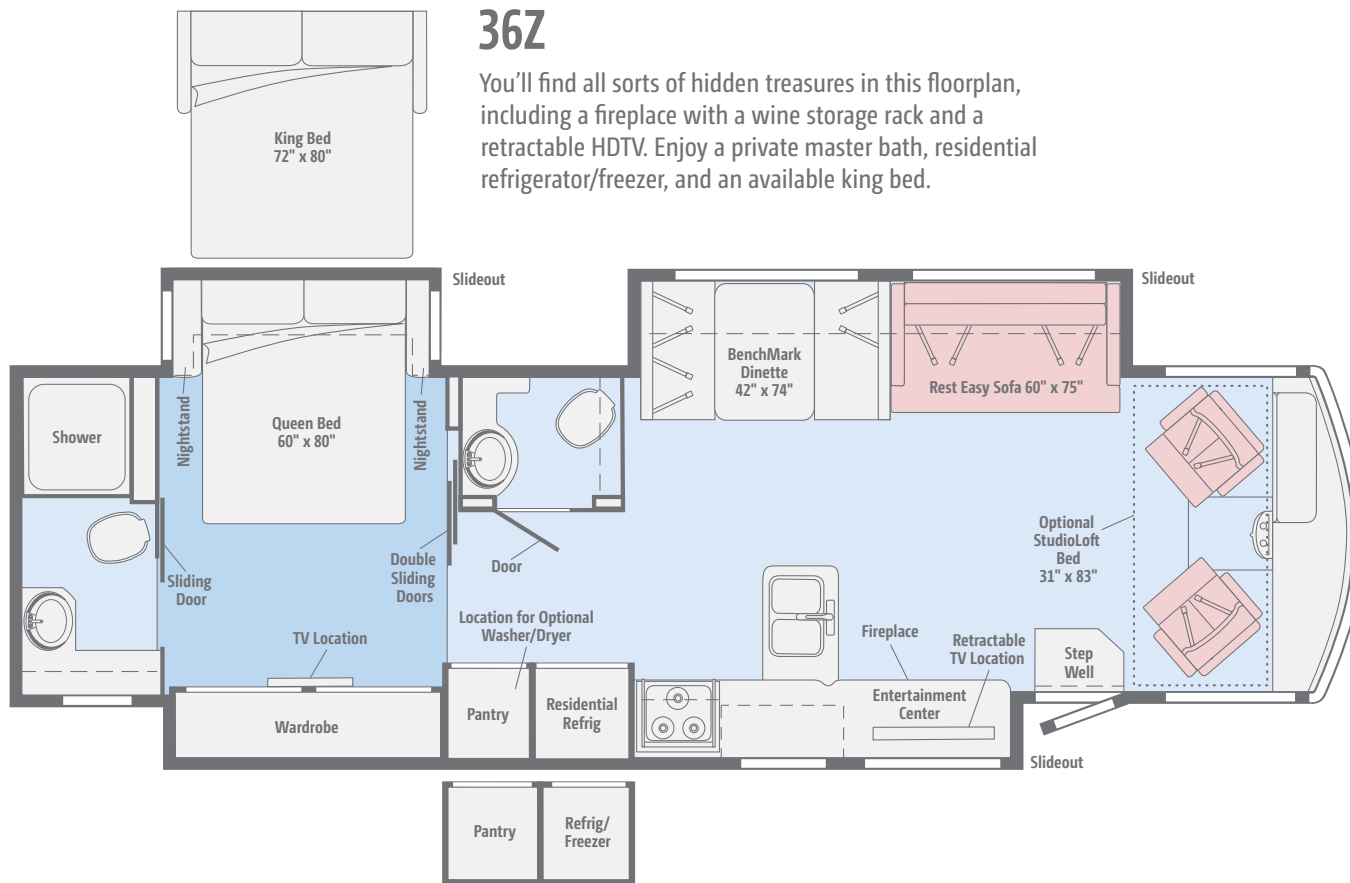
### 35G

The inLounge with movable inTable is the largest, most comfortable sectional sofa you'll find in a motorhome. Other big features include a 4-door refrigerator/freezer and an available powered king bed.



Primera	Carpet	Vinyl

Click here to explore this floorplan's web page.



Choose from three fabric collections and three wood finishes.

## Falling Star



Primera



Feature Fabric



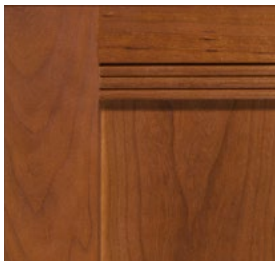
Bedspread



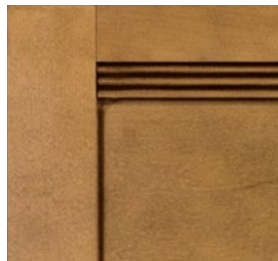
Laminate Countertop



Vinyl



Honey Cherry



Coffee-Glazed Vienna Maple  
(Upgrade)



Glazed Driftwood  
(Upgrade)

*Winnebago® reserves the right to change décor materials and specifications without notice or obligation.*

Choose from three fabric collections and three wood finishes.

## Monument



Primer



Feature Fabric



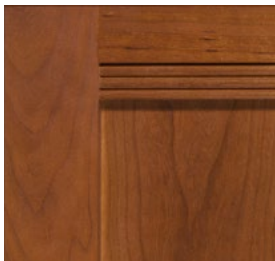
Bedspread



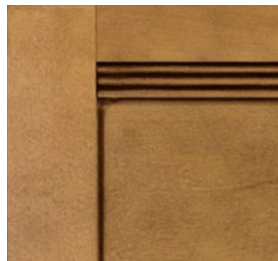
Laminate Countertop



Vinyl



Honey Cherry



Coffee-Glazed Vienna Maple  
(Upgrade)

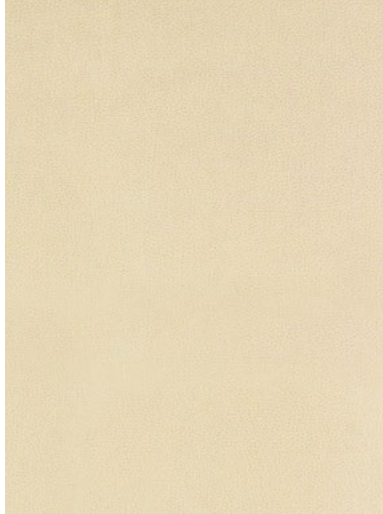


Glazed Driftwood  
(Upgrade)

*Winnebago® reserves the right to change décor materials and specifications without notice or obligation.*

Choose from three fabric collections and three wood finishes.

## Reflection



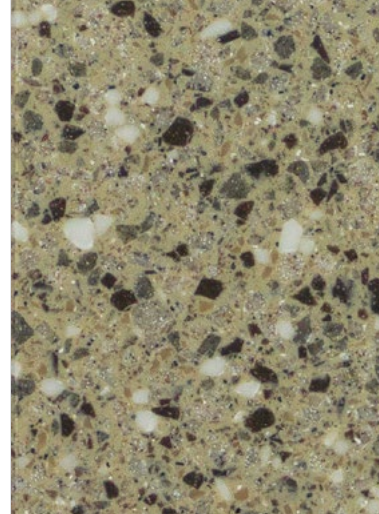
Primer



Feature Fabric



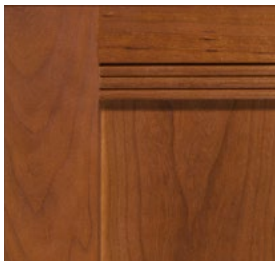
Bedspread



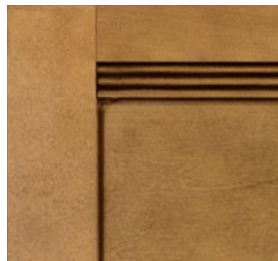
Laminate Countertop



Vinyl



Honey Cherry



Coffee-Glazed Vienna Maple  
(Upgrade)



Glazed Driftwood  
(Upgrade)

*Winnebago® reserves the right to change décor materials and specifications without notice or obligation.*



Choose from four stylish full-body paint selections.



**Black Garnet**  
FULL-BODY PAINT



**Cream**  
FULL-BODY PAINT

Choose from four stylish full-body paint selections.



**Cloud**  
FULL-BODY PAINT



**Ember**  
FULL-BODY PAINT

## Weights & Measures

	33C	35G	36Z
Length	34'4"	36'2"	37'2"
Exterior Height <sup>1</sup>	12'5"	12'4"	12'4"
Exterior Width <sup>2</sup>	8'5.5"	8'5.5"	8'5.5"
Exterior Storage <sup>3</sup> (cu. ft.)	104	115.8	122.2
Awning Length	19'	18'	20'
Interior Height	6'8"	6'8"	6'8"
Interior Width	8'0.5"	8'0.5"	8'0.5"
Freshwater Tank Capacity <sup>4</sup> (gal.)	73	80	83
Water Heater Capacity (gal.)	10	10	10
Holding Tank Capacity - Black/Gray <sup>4</sup> (gal.)	39/60	38/50	33/41 & 47/44*
LP Capacity <sup>5</sup> (gal.)	18	18	18
Fuel Capacity (gal.)	80	80	80
GCWR <sup>6</sup> (lbs.)	26,000	26,000	26,000
GVWR (lbs.)	22,000	22,000	22,000
GAWR - Front (lbs.)	8,000	8,000	8,000
GAWR - Rear (lbs.)	15,000	15,000	15,000
Wheelbase	220"	228"	242"
Seating Capacity	5	5	7

\* The 36Z uses separate black and gray tanks for each bathroom

## Ford® F53 Chassis

6.8L Triton® V10 SEFI engine, TorqShift™ 6-speed automatic transmission w/tow/haul, Hydro-Max power brakes, 4-wheel ABS, 175-amp. alternator

7-pin trailer wiring

Trailer Hitch® 5,000-lb. drawbar/500-lb. maximum vertical tongue weight

Automatic hydraulic leveling jacks w/3-position controls

Stylized aluminum wheels

### OPTIONAL EQUIPMENT

Rear inner dual valve stem extensions



Ford® F53 Chassis

## Cab Conveniences

**Cab seats** hinged armrests, fixed lumbar support, and multi-adjustable slide/recline/swivel

**6-way power driver seat**

**3-point seat belts**

**Radio/Rearview Monitor System** DVD receiver with 6.2" LCD color touch screen, handheld remote, iPod®/MP3 input, rear color camera, Bluetooth®, SiriusXM®-ready, Spotify®, AppRadio One

**Chassis/house battery radio power switch**

**Power steering w/tilt wheel**

**Cruise control**

**Power mirrors w/defrost and sideview cameras**

**Map lights**

**MCD solar/blackout powered front shade**

**Solar shades and privacy curtains for driver and passenger windows**

**Defroster fans**

**Dash workstation w/USB and 12-volt powerpoint**

**Passenger-side curb view dual-pane window**

### OPTIONAL EQUIPMENT

Passenger seat w/footrest

SiriusXM™ receiver (subscription not included), remote

## Interior

**Glide & Dine table/buffet/chairs w/retractable 48" HDTV** (33C)

**48" HDTV** (35G, 36Z)

**Amplified digital HDTV antenna system**

**Electric fireplace** (35G, 36Z)

**LED ceiling lights**

**Satellite system ready** (lounge and bedroom)

**Soft vinyl ceiling**

**MCD solar/blackout roller shades** (on select windows)

**OnePlace® systems center**

**Tinted, dual-pane windows**

**Powered ventilator fan** (bedroom 35G, 36Z)

**Powered ventilator fan** (lounge)

**Powered roof vent** (bath(s))

**Video selection system**

**Washer/dryer prep** (33C, 35G)

### OPTIONAL EQUIPMENT

**Powered StudioLoft™ ladder, dome LED lights**

**Stackable washer/dryer** (33C, 35G)

**Winegard® Mission® automatic satellite TV antenna system**

**Home Theater Sound System** amplifier, DVD player, receiver, speakers, and subwoofer

**Vinyl floor throughout**

## Galley

**Corian® solid-surface countertop, decorative backsplash, and sink covers**

**Microwave/convection oven w/vented range fan** (touch control)

**3-burner range top w/cover and storage below**

**Flip-up countertop extension** (33C)

**2-door residential refrigerator/freezer w/icemaker** (36Z)

**4-door refrigerator/freezer w/icemaker** (33C, 35G)

### OPTIONAL EQUIPMENT

**3-burner range w/cover and oven**

**Large-capacity 2-door refrigerator/freezer w/icemaker, water filter, 2 Group 31 batteries** (36Z)

## Bath

- Laminate countertop
- Flexible showerhead
- Textured glass shower door
- Skylight
- Porcelain toilet w/foot pedal and sprayer

Water pump switch(es)

Medicine cabinet

Wall mirrors (35G, 36Z)

Assist bar (36Z)

## Bedroom

Queen bed w/innerspring mattress and storage below (33C, 36Z)

Powered queen bed w/Ideal Rest® Nouveau digital comfort control mattress w/remotes (35G)

Headboard

Bedsread, pillows, and shams

28" HDTV (33C, 35G)

32" HDTV (36Z)

### OPTIONAL EQUIPMENT

Powered king bed w/Ideal Rest Nouveau digital comfort control mattress w/remotes (35G)

King Ideal Rest Nouveau digital comfort control mattress w/remotes (33C, 36Z)

King bed w/innerspring mattress and storage below (33C, 36Z)

Queen Ideal Rest Nouveau digital comfort control mattress w/remotes (33C, 36Z)

## Exterior

Automatic entrance door steps

Porch light (33C, 35G)

Lighted storage compartments

Premium high-gloss fiberglass skin

KeyOne™ lock system

Front mud flaps

Ladder

Powered patio awning w/LED lighting and metal wrap

Powered entrance awning w/LED lighting (36Z)

Lower front protective mask

### OPTIONAL EQUIPMENT

Entertainment Center 32" HDTV w/adjustable bracket, AM/FM stereo, CD player, remote, 2 speakers

## Heating & Cooling System

2 high-efficiency air conditioner heat pumps w/Energy Management System w/ChillGrille™

35,000 BTU low-profile ducted furnace (33C)

40,000 BTU low-profile ducted furnace (35G, 36Z)

## Electrical System

AC/DC electrical distribution system

45-amp. converter/charger (33C, 35G)

50-amp. power cord

5,500-watt Cummins Onan® Marquis Gold™ gas generator

Automatic generator start system (36Z)

Generator/shoreline automatic changeover switch

2 deep-cycle, Group 31 Marine/RV batteries (33C, 35G)

4 deep-cycle, Group 31 Marine/RV batteries (36Z)

Battery disconnect systems (coach and chassis)

PowerLine® Energy Management System

Automatic dual-battery charge control

Auxiliary start circuit

Exterior antenna jack and AC duplex receptacle

1,000-watt inverter (33C, 35G)

2,000-watt inverter/charger (36Z)

Cable TV input

Portable satellite dish hookup

## Plumbing System

Service center color-coded labels, pressurized city water hookup w/diverter valve, drainage valves, 10' sewer hose, QuickPort® service connection hatch, exterior wash station w/lighted pump switch

Permanent-mount LP tank w/gauge

On-demand water pump

TrueLevel™ holding tank monitoring system

Winterization Package water heater bypass valve and siphon tube

Heated holding tank compartment

10-gallon 110-volt/LP water heater w/motoraid/ auto heater

Gravity water tank fill w/lockable door

Holding tank flushing system (black tank only)

LPG accessory connection (patio area)

## Safety

Child seat tether anchor in forward-facing dinette seat (36Z)

LP, smoke, and carbon monoxide detectors

10 BC fire extinguisher

Ground fault interrupter

High-mount brake lamp

Fog lamps

## Warranty<sup>7</sup>

**12-month/15,000-mile basic limited warranty<sup>8</sup>**

**36-month/36,000-mile limited warranty on structure<sup>8</sup>**

**10-year limited parts-and-labor warranty on roof skin<sup>8</sup>**

### FOOTNOTES

- The height of each model is measured to the top of the tallest standard feature and is based on the curb weight of a typically equipped unit. The actual height of your vehicle may vary by several inches depending on chassis or equipment variations. Please check with your dealer for further information.
- Floorplans feature a wide-body design - over 96" In making your purchase decision, you should be aware that some states restrict access on some or all state roads to 96" in body width. Before making your purchase decision, you should confirm the road usage laws in the states of interest to you.
- The load capacity of your motorhome is designated by weight, not by volume, so you cannot necessarily use all available space when loading your motorhome.
- Capacities are based on measurements prior to tank installation. Slight capacity variations can result due to installation applications.
- Capacities shown are tank manufacturer's listed water capacity (W.C.). Actual filled LP capacity is 80% of listing due to overfilling prevention device on tank.
- Actual towing capacity is dependent on your particular loading and towing circumstances which includes the GVWR, GAWR, and GCWR as well as adequate trailer brakes. Please refer to the Operator's Manual of your vehicle for further towing information.
- See separate chassis warranty.
- See your dealer for complete warranty information.

NA Not Available

Not all items available in combination. See dealer for details.

Winnebago's® continuing program of product improvement makes specifications, equipment, model availability, and prices subject to change without notice. Published content reflects the most current product information at time of printing. Please consult your dealer for individual vehicle features and specifications.



Let us host  
your next

# Adventure



[WGOAdventures.com](http://WGOAdventures.com)

Connect with Winnebago (Click one of the following)



Like us



Follow us



Watch us



Show your Winnebago love  
with high-quality gifts and wearables.



Apparel | Gifts | Parts | Gear

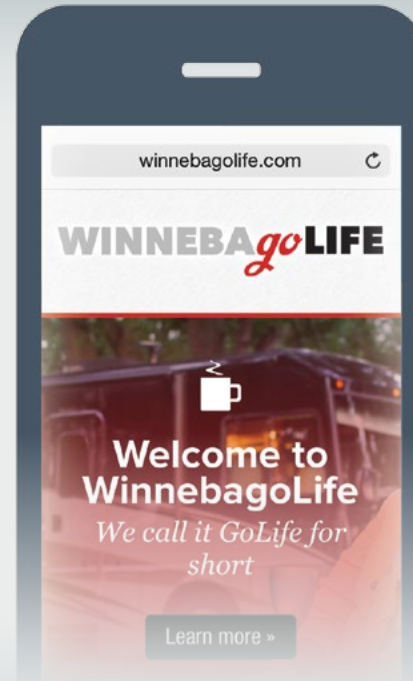
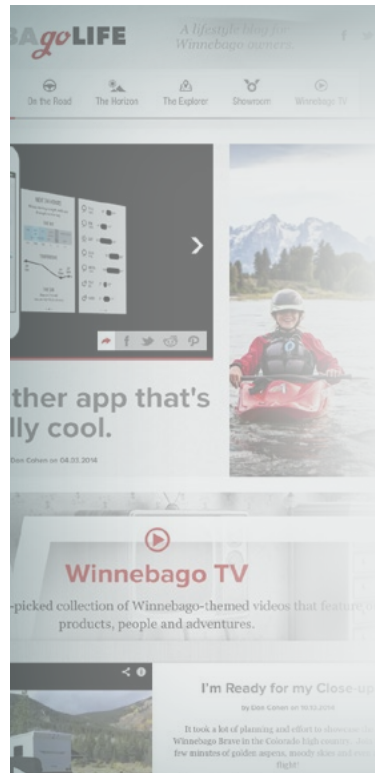
[WinnebagoOutdoor.com](http://WinnebagoOutdoor.com)

Find your style



## WinnebagoInd.com Has All The Answers

Visit [WinnebagoInd.com](http://WinnebagoInd.com) on your computer, smartphone, or tablet for the latest product information and updates.



## Welcome to GoLife!

Visit our lifestyle blog for motorhome news, personal travelogues, and community stories.

[WinnebagoLife.com](http://WinnebagoLife.com)



# **PREFERRED CARE PROGRAM**

We back our motorhomes with best-in-class support both before and after the sale:

- 12-month/15,000-mile basic limited warranty
  - 36-month/36,000-mile limited warranty on structure
  - 10-year limited parts-and-labor warranty on fiberglass roof
  - Complimentary 24-hour roadside assistance program
- TripSaver® Fast Track Parts guarantees that in-stock warranty parts ship directly to your dealer within 24 hours
  - National dealer service network



For more information, visit us  
[WGOService.com](http://WGOService.com)



From RV to personal insurance, Winnebago RV Insurance can provide all the coverage and services you need to feel at home on the road.

**For more information:**  
**(800) 642-4892**



## CONTACT US

### GENERAL INQUIRIES

Corporate Switchboard  
(641) 585-3535

### CURRENT PRODUCT OWNER AND SERVICE-RELATED INQUIRIES

(800) 537-1885  
or [winnebagoind.com](mailto:winnebagoind.com)

### NEW VEHICLE SALES INQUIRIES

[sales@winnebagoind.com](mailto:sales@winnebagoind.com)

### FAX

(641) 585-6966

### POSTAL ADDRESS

Winnebago Industries, Inc.  
P.O. Box 152  
Forest City, IA 50436

### STREET ADDRESS

Winnebago Industries, Inc.  
605 West Crystal Lake Road  
Forest City, IA 50436



## Join the Club, Join the Fun

Here's the perfect way to begin your life on the road as the owner of a new Winnebago – by joining the exclusive WIT Club. Start your adventure with other fun-loving WIT Club members from across the country and get the most out of your new Winnebago motorhome.



### Members enjoy:

- Caravans and rallies
- Newsletters
- Local and state group activities
- RV travel benefits

See more at  
[WITClub.com](http://WITClub.com)



## Grand National Rally

Each year, thousands of Winnebago owners descend upon Forest City, Iowa. Rally-goers enjoy an unforgettable week reconnecting with friends, taking tours, participating in activities, and more. Join the adventure next July!