



Bounder

CLASS A GAS



Bahama Blues
Scheme 1*



River Rock
Scheme 2*



White Shadow
Scheme 1*



Beige Bounty
Scheme 2*

FLEETWOOD
Driven to Explore

* See your Fleetwood Dealer or visit our website at www.fleetwoodrv.com to view all graphic and color choices.

INTERIOR DÉCORS

Bahama Blues

LIVING/DINING ROOM



Dinette Cushions



Sofa



Ultraleather™
Driver & Front
Passenger
Seats,
Sofa (optional)

BEDROOM



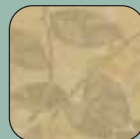
Headboard &
Bedspread



Pillow Shams &
Throw Pillows

Cashmere

LIVING/DINING ROOM



Dinette Cushions



Sofa



Ultraleather™
Driver & Front
Passenger
Seats,
Sofa (optional)

BEDROOM



Headboard &
Bedspread



Pillow Shams &
Throw Pillows

Quartz

LIVING/DINING ROOM



Dinette Cushions



Sofa



Ultraleather™
Driver & Front
Passenger
Seats,
Sofa (optional)

BEDROOM



Headboard &
Bedspread



Pillow Shams &
Throw Pillows

WOOD FINISHES



Symphony Cherry

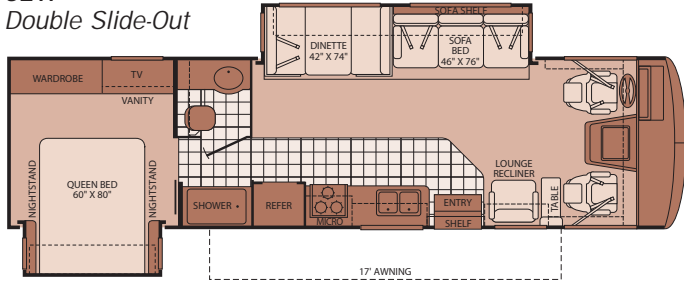


Plantation Cherry

FLOOR PLANS



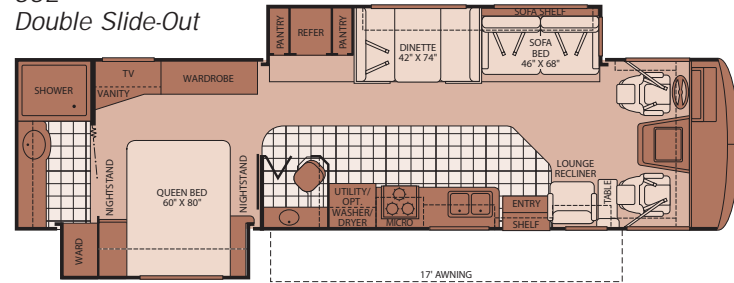
32W
Double Slide-Out



Interior Storage Capacity: 140 cu. ft.
Exterior Storage Capacity: 115 cu. ft.

Available Options: 491, 700, 807, 832, 833, 852

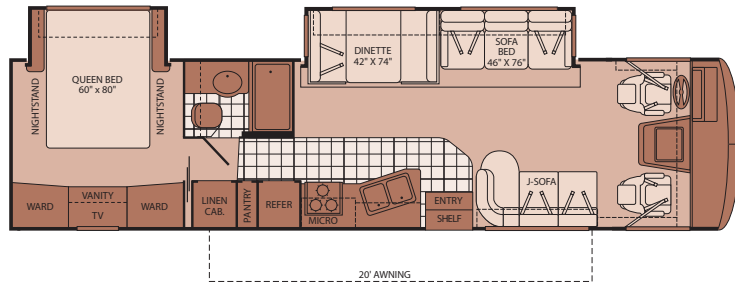
35E
Double Slide-Out



Interior Storage Capacity: 190 cu. ft.
Exterior Storage Capacity: 150 cu. ft.

Available Options: 126, 145, 149, 491, 700, 807, 832, 833

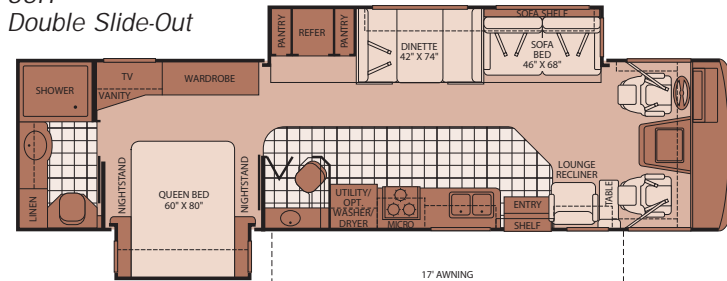
34G
Double Slide-Out



Interior Storage Capacity: 177 cu. ft.
Exterior Storage Capacity: 136 cu. ft.

Available Options: 145, 149, 700, 807, 832, 833, 852

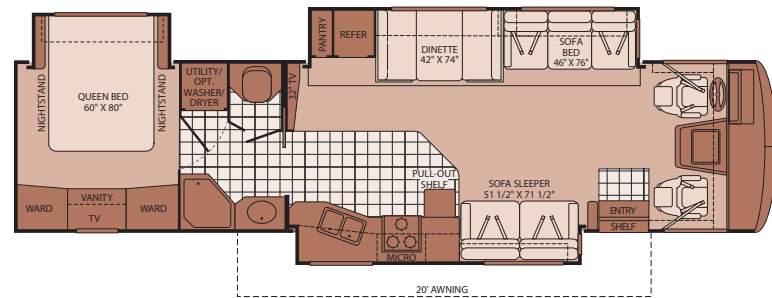
35H
Double Slide-Out



Interior Storage Capacity: 169 cu. ft.
Exterior Storage Capacity: 150 cu. ft.

Available Options: 126, 145, 149, 491, 700, 807, 832, 833

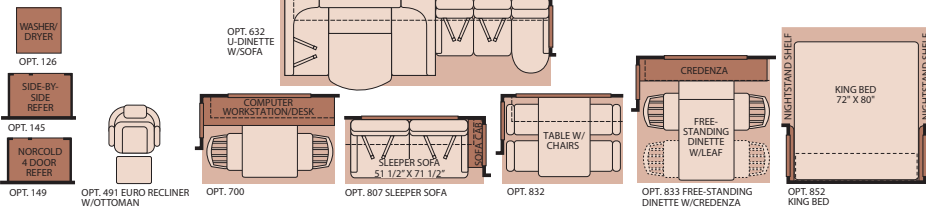
38P
Triple Slide-Out



Interior Storage Capacity: 184 cu. ft.
Exterior Storage Capacity: 110 cu. ft.

Available Options: 126, 145, 149, 632, 700, 832, 833, 852

OPTIONS



STANDARD FEATURES

INTERIOR

INTERIOR - THROUGHOUT

- 120V/12V AC/DC Converter
- 120V/12V Wire Raceways
- 3 Interior Décor's
- 3 Way Water Pump Switch
- 34,000 Btu Furnace (30,000/20,000 Btu on 38P)
- 10 Gallon Quick Recovery Water Heater w/Direct Spark Ignition (Gas/Electric)
- Central Electrical Panel
- Complete TuffPEX Plumbing System
- Coordinated Cabinet Hardware
- Décor Lighting
- Deluxe Roller Bearing, Full Extension Drawer Guides & Transit Ship Locks
- Dual 6V Deep Cycle House Batteries
- Dual Roof A/C High Efficiency w/Solar Panel & Chill Grills
- Energy Management System
- Fluorescent Ceiling Lights w/Dual Bulbs
- Incandescent Lighting
- Plush Wall-to-Wall Carpet w/Carpet Pad
- Radius Corner Cabinetry
- Solid Divider Doors
- Telephone Jack In-Dash
- TV Antenna w/Signal Booster
- Wall Switches
- Water Heater Bypass
- Whole Coach Water Filtration System
- Wood Drawers
- Soft Touch Vinyl Ceiling

DRIVER CONVENIENCE

- 3 Point Seat Belts at Driver & Front Passenger Seats
- AM/FM Radio w/CD Player, Satellite Radio Ready
- Auto A/C Heater Combo
- Auxiliary Start Circuit
- Battery Disconnect System
- CB Radio Ready
- Cruise Control
- Dash Fans
- Double Swivel Sun Visors w/Map Pockets
- Ultraleather™ Driver/Front Passenger Captain's Chairs w/Reclining Back/Slide Controls
- Intermittent Wiper Control
- Low Profile Engine Cover
- Monitor Panel in Dash
- Radio Switch Main/Auxiliary Power
- Soft Surface Automotive Dash
- Tilt Steering Wheel
- Color Rear Vision System
- DSS Manual Lift Satellite Dish

LIVING ROOM

- 26" LCD HDTV (26" and 32" LCD HDTV in 38P)
- DVD Player
- Entry Assist Handle
- Lounge Recliner (Select Models)
- Residential Seat Styling

GALLEY

- 1.4 cu.ft. Over the Range Microwave Oven w/Electronic Touch Pad
- 8 cu.ft. Dometic® Double Door Refrigerator
- Adjustable Cabinet Shelves (Select Cabinets)
- Demand Water Pump w/Filter
- Fan-Tastic® Power Roof Vent
- Folding Range Cover
- Large Drawers Under Dinette
- Large, Double Stainless Steel Sink
- Raised Panel Cabinet Doors
- Single Lever Galley Faucet w/Pullout Sprayer
- Sink Cover/Cutting Board
- Vinyl Flooring
- Waste Basket
- 3 Burner, High Output Range w/Oven
- Dream Dinette Mechanism

BEDROOM

- Bedspread w/Decor Pillows
- Pleated Shades
- Rear Speakers
- Restonic® Innerspring Mattress
- Second Phone Jack
- Wardrobe Lighting
- Torque Windows

BATHROOM

- Coordinated Bath Accessories
- Fan-Tastic® Power Roof Vent w/Wall Switch
- Glass Shower Enclosure w/Skylight and Lower Step Threshold
- Hardwood Bath Door/Trims
- Molded Tub/Shower Enclosure
- Porcelain Toilet w/Water Saver
- Skylight in Tub/Shower
- Toilet Tank San-T-Flush™ System

SAFETY/CONVENIENCE

- 10 ABC Fire Extinguisher
- Carbon Monoxide Detector/Alarm
- Propane Detector/Alarm
- Smoke Detector/Alarm
- Child Safety Tether
- Multiple Seatbelt Locations

EXTERIOR

EXTERIOR - THROUGHOUT

- 2 Graphic Schemes Available
- 5.5 kW Onan® MicroQuiet Generator
- 50 Amp Service
- Awning Rail/Drip Molding (Both Sides)
- Dual Battery Charge Control
- Dual Pane Windows w/Screens
- Dual Patio Receptacles
- Fiberglass Front/Rear Caps
- Full-Body Paint
- Heated Water & Holding Tank Compartments
- Mud Flaps
- Park Cable Receptacle
- Patio Awning
- Single Motor Windshield Wipers w/Wet Arm
- Utility Compartment w/Exterior Shower
- Valve Extenders
- Large Headlamps
- ABS Wheel Well Trims
- TV/12V Jack in Doorside Compartment

AUTOMOTIVE

- 4 Point Automatic Levelers
- Large One-Piece Bonded-in Windshield
- Steel Surface on Bulkhead
- Trailer Hitch w/7 Pin Electrical Hook-Up†
- Underhood Utility Light
- 22" Aluminum Wheels
- New Wiper System with 25% Larger Sweep Area Than Previous Design

SAFETY/CONVENIENCE

- Wide, 30" Entry Door w/Screen Door & Deadbolt Lock
- Porch Light (Doorside)
- Power Entry Step
- Remote/Heated Rear View Mirrors
- Roof Ladder
- Automotive Safety Glass
- Daytime Running Lights
- Hydraulic 4 Wheel Disc Brakes w/4 Wheel Anti-Lock Brakes

STORAGE

- Continuous One-Piece Compartment Bulb Seal
- EZ Store Compartment on Living Area Slide-Outs
- Gas Lift Strut Supports
- Hidden, Stainless Steel Latch Rods
- Insulated Aluminum Luggage Doors w/Single Paddle Metal Latches & Stainless Steel Hinges Side Hinged Luggage Doors (Selected Locations)
- Lighted Luggage Compartments
- Pass Through Storage
- Rotomolded Polyethylene Luggage Compartments

BODY STRUCTURE

- Aluminum Interlocking Floor/Wall/Ceiling Framing
- Power Platform® Construction (Fleetwood Exclusive)

- Basement Floor Configuration
- Royal Tuff-Ply Radius Roof w/Ducted A/C
- Vacu-bond® Upper/Lower Floors
- Vacu-bond® Walls w/Smooth High Gloss Exterior Tuff-Coat® Fiberglass

OPTIONS

INTERIOR - THROUGHOUT

- Computer Workstation In-Dash
- CSA Package (Canadian Specs)**
- Sirius Satellite Radio® (6 Month Subscription Included)
- Washer/Dryer (Select Models)
- 1200 Watt Inverter

DRIVER CONVENIENCE

- DSS Auto Seek Satellite Dome

LIVING ROOM

- Leather Euro Recliner w/Ottoman
- Sofa w/Footrest
- Ultraleather™ Sofa Bed
- Ultraleather™ Hide-A-Bed
- Ultraleather™ Lounge Recliner
- Ultraleather™ Sofa w/Footrest

GALLEY

- 3 Burner Cooktop
- Dometic® 4 Door Refrigerator w/Ice Maker (Select Models)
- Convection Microwave Oven
- Free-Standing Table & Chairs
- Norcold® 4 Door Refrigerator w/Ice Maker (Select Models)

BEDROOM

- Samsung® 19" LCD HDTV

EXTERIOR - THROUGHOUT

- Diamond Shield Clear Front Protective Mask
- Electric Awning
- Powered Front Shade
- Side Turn Signal Camera

FLEETWOOD ADVANTAGES

- **Power Platform® Construction (Fleetwood Exclusive)**
- **Pass Through Storage**
- **DuPont® Full-Body Paint Standard**
- **5 Floor Plans from 33' to 38' w/Double or Triple Slide-Outs**
- **Multiple Décor, Wood and Exterior Graphic Combinations to Customize Your Bouncer**
- **Large One-Piece Bonded-in Windshield**

**CSA standards may require substitution or deletion to achieve conformance.

WEIGHTS & MEASUREMENTS

FORD® CHASSIS

MODELS	32W	34G	35E	35H	38P
Engine Displacement (Liters)	6.8	6.8	6.8	6.8	6.8
Wheelbase (Inches)	208"	228"	228"	228"	242"
GVWR (lbs) ¹	22,000	22,000	22,000	22,000	24,000
Front GAWR (lbs) ²	7,500	7,500	7,500	7,500	9,000
Rear GAWR (lbs) ²	14,500	14,500	14,500	14,500	15,500
GCWR (lbs) ³	26,000	26,000	26,000	26,000	30,000
Hitch Rating Weight (lbs) [†]	5,000	5,000	5,000	5,000	6,000
Tongue Weight (lbs) [†]	500	500	500	500	600
Fuel Capacity (gal)	75	75	75	75	75

DIMENSIONS & CAPACITIES

MODELS	32W	34G	35E	35H	38P
Overall Length ⁴	33' 3"	35' 3"	36' 3"	36' 3"	38' 3"
Overall Height (with A/C)	12' 10"	12' 10"	12' 10"	12' 10"	12' 10"
Overall Width (maximum) ^{5, 6}	102"	102"	102"	102"	102"
Interior Height (maximum)	84"	84"	84"	84"	84"
Interior Width (maximum)	96"	96"	96"	96"	96"
Fresh Water Holding Tank (gal)	85	85	85	85	85
Grey Water Holding Tank (gal)	58	58	58	58	58
Black Water Holding Tank (gal)	42	42	42	42	42
Appliance Propane Tank (gal) (WC) ⁷	25	25	25	25	25
Water Heater Tank (gal)	10	10	10	10	10

- GVWR (Gross Vehicle Weight Rating) is the maximum permissible weight of this fully loaded motor home. The GVWR is equal to or greater than the sum of the (UWW) unloaded vehicle weight plus the (CCC) cargo carrying capacity*.
- GAWR (Gross Axle Weight Rating) is the maximum permissible loaded weight a specific axle is designed to carry.
- GCWR (Gross Combined Weight Rating) is the value specified by the motor home manufacturer as the maximum allowable loaded weight of this motor home with its towed vehicle. Towing and braking capacities may be different. Refer to Fleetwood and chassis manufacturer's manuals for complete information.
- Length measured from front bumper to rear bumper (excludes accessories).
- Excludes safety equipment and awnings.
- Motor homes feature a body-width over 96" which will restrict your access to certain roads. Before purchasing, you should research any state and/or province road laws which may affect your usage.
- Tank manufacturer's listed water capacity (WC). Actual propane capacity is 80% of water listing as required by the safety code.

WORKHORSE™ CHASSIS

MODELS	32W	34G	35E	35H	38P
Engine Displacement (Liters)	8.1	8.1	8.1	8.1	8.1
Wheelbase (Inches)	208"	228"	228"	228"	242"
GVWR (lbs) ¹	22,000	22,000	22,000	22,000	24,000
Front GAWR (lbs) ²	7,500	7,500	7,500	7,500	9,000
Rear GAWR (lbs) ²	14,500	14,500	14,500	14,500	15,500
GCWR (lbs) ³	26,000	26,000	26,000	26,000	30,000
Hitch Rating Weight (lbs) [†]	5,000	5,000	5,000	5,000	6,000
Tongue Weight (lbs) [†]	500	500	500	500	600
Fuel Capacity (gal)	75	75	75	75	75

Liquid Weight Reference: Water (gal) = (8.3 lbs/3.8kgs) Fuel (gal) = 6.1 lbs/2.8 kgs)

Propane (gal) = (4.2 lbs/1.9 kgs)

Metric Conversion: Multiply pounds x 0.453 to obtain kilograms. Multiply gallons x 3.785 to obtain liters. Multiply liters x 61 to obtain cubic inches.

FORD®/WORKHORSE™ CHASSIS

Model: Ford®/Workhorse™

Engine: 6.8L Triton V10/8.1L Vortec™ V8

Transmission: Ford®, 5-Speed Automatic w/Overdrive
Workhorse™, 6-Speed Automatic w/Overdrive

Alternator: 130 Amp/145 Amp

Torque: 457 lb-ft @ 3250 RPM/455 lb-ft @3200 RPM

Horsepower: 362HP/340HP

† The chassis manufacturer recommends the installation of a supplemental brake control system to activate the brakes on the vehicle or trailer you are towing. Hitch receiver ratings expressed are maximum for the hitch receiver installed and may require the purchase of additional equipment that is dependent on the weight of the towed load. Consult with hitch receiver manufacturer for further information.

N/A = not available at time of printing.

*UWW and CCC are found on the cargo carrying capacity label in each RV.

IMPORTANT — PLEASE READ: Product information, photography and illustrations included in this publication were as accurate as possible at the time of printing. For further product information and changes, please visit our website at www.fleetwoodrv.com or contact your local Fleetwood dealer. Prices, materials, design and specifications are subject to change without notice. All weights, fuel, liquid capacities and dimensions are approximate. Fleetwood has designed its recreational vehicles to provide a variety of uses for its customers. Each vehicle features optimal seating, sleeping, storage and fluid capacities. The user is responsible for selecting the proper combination of loads (i.e. occupants, equipment, fluids, cargo, etc.) to ensure that the vehicle's capacities are not exceeded.