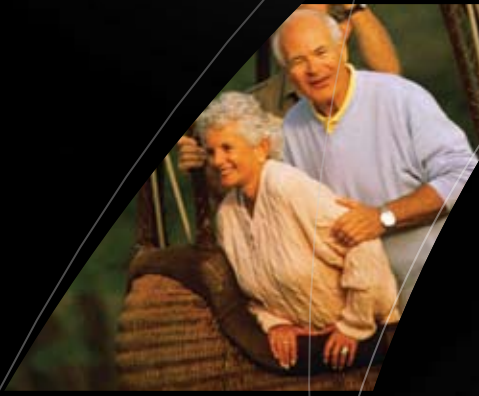
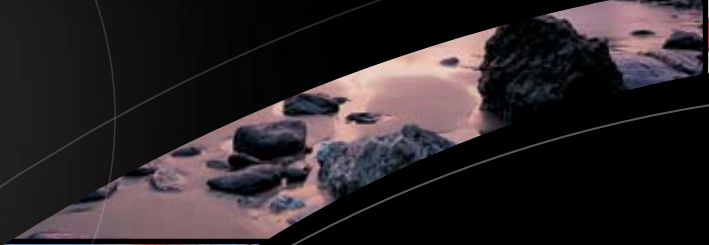


2007 NEPTUNE®



HOLIDAY RAMBLER®

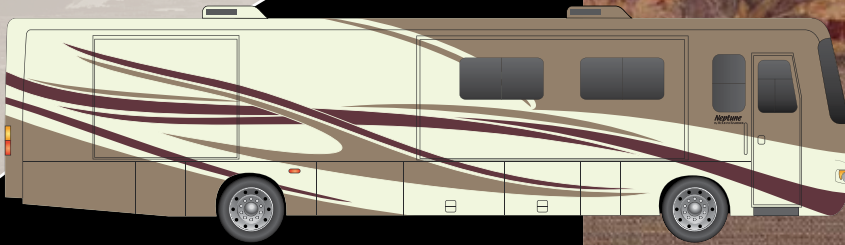
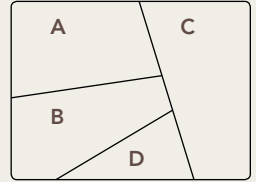
This is Living



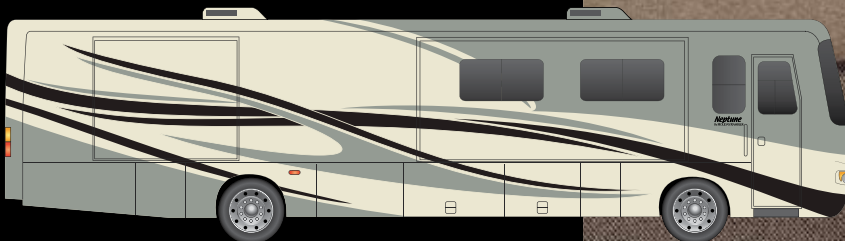
A BEAUTIFUL REFLECTION OF YOU.

Holiday Rambler makes it easy to take your style on the road. We offer a variety of decors – each as lovely as the next with rich fabrics, lustrous woods, eye-catching accents and stunning exterior graphics. So the problem isn't finding a look you like, it's narrowing it down to just one.

- A. BEDSPREAD
- B. SOFA
- C. ACCENT
- D. CARPET



MOROCCAN SUNSET



INDIGO PALMS



NEPTUNE HARDWARE

Great design can be found in the details, like our stylish cabinet hardware with a satin nickel finish.



Manufactured in, not added on. For added protection against stains, soil repellent is applied to virtually all upholstery fabric during the finishing process for superior coverage.*

*Brand and application of upholstery fabric protection may vary depending on date recreational vehicle was manufactured.



NEW VINTAGE OAK



CHAMPAGNE SELECT



NEWPORT CHERRY



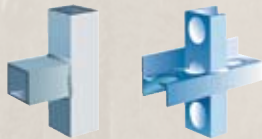
GREAT LAKES



SILVER CIRCLE



Alumaframe®

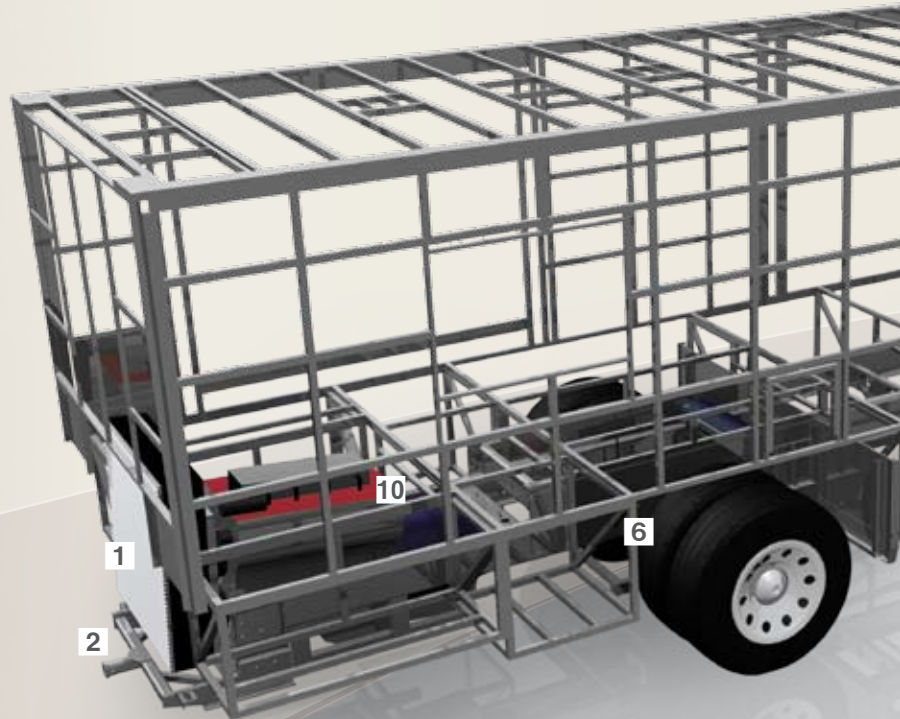


Aluminum
(Butt-Welded)

Alumaframe®
(C-Channel)

Thanks to our Alumaframe® Superstructure, your Holiday Rambler coach is built to take on anything the road can dish out. We revolutionized the industry by replacing outdated tubular aluminum construction with our exclusive system of aluminum C-Channel crossmembers. These run the full length of the coach, with double-welded intersections for superior strength. This makes your Holiday Rambler lighter and sturdier than other coaches and gives you reliability you can count on down the road.

- 1** The Neptune features a rear-mounted aluminum radiator with stacked aluminum charged air cooler, for increased cooling capacity.
- 2** A 7,000 lb. hitch receiver gives the coach powerful towing capacity.
- 3** Dual fuel fills provide the convenience of filling the fuel tank from either side of the coach.
- 4** A larger 34" spacing between the frame rails offers greater side-to-side stability.



ROADMASTER RAIL RR4R CHASSIS

The 2007 Neptune owes its remarkable performance to the Roadmaster Raised Rail RR4R Series chassis. You'll marvel at the seamless ride and handling that's only possible in a chassis that's designed exclusively for a luxury motorcoach and custom-built to the exact specifications of each floorplan. We invite you to take a few minutes and discover all the ways Roadmaster offers you the very best in safety, reliability, comfort and convenience.



9-LAYER ROOF (top to bottom)

- One-piece peaked fiberglass roof
- Luaun backing
- Thick, tapered bead foam insulation
- Aluminum double I-beam superstructure filled with fiberglass insulation
- Vapor barrier
- Structure foam: thermal insulative barrier
- 1/2" bead foam insulation
- Foam padding for extra insulation
- Padded vinyl ceiling

5 The Roadmaster chassis provides for full pass-through storage spaces, accommodating larger items with ease.

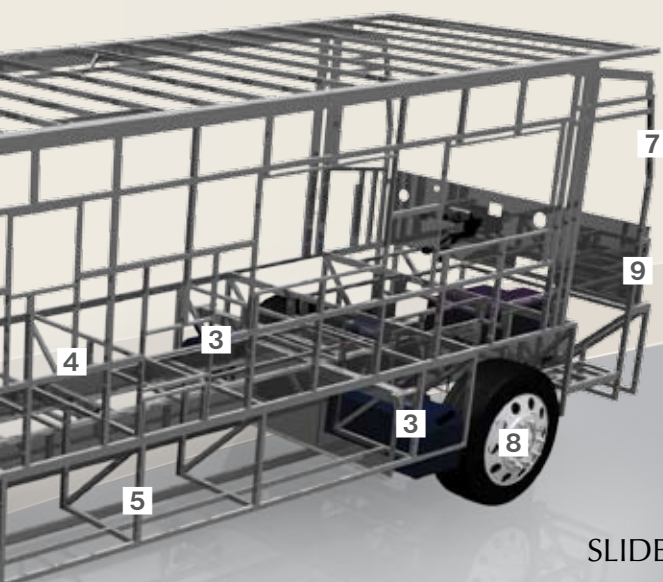
6 Cushion Air Glide Suspension provides a smoother ride with excellent handling and cornering.

7 Steel cage cockpit construction offers added safety.

8 The anti-lock braking system (ABS) maintains traction and steering when braking on slick surfaces.

9 Heavy-duty steel undercarriage and firewall for unsurpassed safety, strength and durability.

10 Master the highways and byways with Neptune's rugged Cummins® ISB 325 HP engine with 610 lbs./ft. of torque and an Allison® 2500 MH 6-speed World Transmission. The new electronic shift pad offers added convenience.

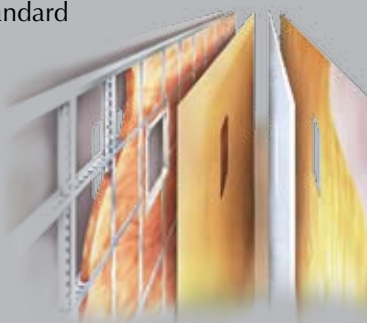


SLIDE-OUT CONSTRUCTION

When you purchase a Holiday Rambler, you can be sure the slide-out boxes are some of the strongest and most reliable you'll find anywhere. They feature our exclusive multi-layer construction to give you maximum insulation and to reduce the chance of warping, twisting or shifting.

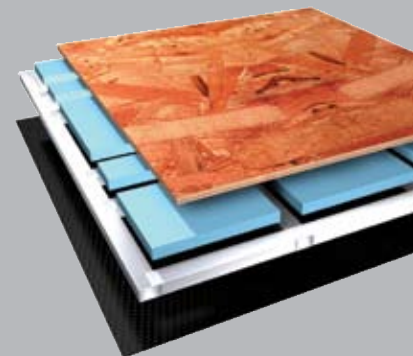
5-LAYER EXTERIOR WALL (left to right)

- Smooth gel coat fiberglass is standard
- Interlocking C-Channel filled with 1-1/2" fiberglass insulation bonded in place so it doesn't sag or leave spaces uninsulated
- Vapor barrier
- Bead foam adds comfort, saves energy and provides a thermal insulative barrier
- Interior paneling



4-LAYER FLOOR (top to bottom)

- Structurwood™
- Blue foam insulation
- 1-1/2" aluminum tube
- Three-ply poly underbelly





BODY CONSTRUCTION: FEATURES

- Alumaframe® Superstructure
- Steel Cage Cockpit Construction
- Peaked One-Piece Fiberglass Roof with Fiberglass Insulation
- Smooth Gel Coat Fiberglass Exterior Walls
- New Front and Rear Caps
- One-Piece Generator Access Door
- New Rear Engine Door and Grill Application
- Fiberglass Engine Cover
- Panaview™ 1-Piece Front Windshield
- 84" Interior Height
- Aluminum-Framed Floor on Steel Trusses
- Structurwood™ Flooring
- Interior Paneling with 3/4" Insulation
- Foam Insulated Floor Framing with 3-Ply Underbelly
- Fog Lights
- Low-Profile Sealed LED Marker Lights
- Automotive Style Taillights
- Metal Fuel Door with Lock into Fender
- 30" Deep Bedroom Slide-Out Houses (N/A: 34SBD, 37PBD)
- Side-Hinged Baggage Doors
- One-Piece Polyethylene Pass-Through Storage Compartments
- Carpeted Electric Flush-Floor Stepwell Cover
- Interior Rubber Entry Step with Built-In Stepwell Storage Bucket
- Exterior Double Entry Steps
- Rear Ladder
- Undercoating

OPTIONS

- Storage Bay Slide-Out Tray, Pass-Through
- XL Package: Deluxe Full-Body Paint; 17.5" Chrome Head Exterior Mirror; 3M Film Front Mask; Full-Length Mud Flap; OptimaLeather™ Pilot and Co-Pilot Recliner Seats; 3-Camera Rear Vision System with Audio and Adjustable Center Camera;

CD Player/Radio with DVD Player, Sirius Ready Compatibility, Weather Band, Remote, and Six Speakers; 20" Color TV with Remote Control in Bedroom; Stainless Steel Spacesaver Microwave and Refrigerator, Any Combination (N/A with Hardwood Raised Panel Doors on Refrigerator); Air Horns; Upgraded Satin Nickel Bath Hardware; Upgraded Satin Nickel Wall Sconces and Dinette Light; Armstrong Laminate Floor with Runner Between Entry Tile and Kitchen Tile; Corian® Backsplash IPO Mirror Application; Washer/Dryer Prep; Porcelain Stool; Satin Nickel Shower Diverter, Hose, and Head, with Slide Bar for Shower Head with Soap Dish IPO Parchment Shower Faucet; Satin Nickel Bath Lavatory Faucet; Select Comfort Bed; Fantastic 12V Attic Fan with Rain Sensor with Electronic Wall Thermostat in Bath; Wood Louver Air Return Grill for Furnace IPO Metal Air Return Grill; Eclipse Automatic Poly-Weave Patio Awning

CHASSIS/ENGINE/SUSPENSION: FEATURES

- Roadmaster Raised Rail Chassis RR4R
- Cummins® ISB 325 HP Low Torque Engine with Allison® 2500 MH 6-Speed World Transmission
- Pushbutton Shift Pad on 2500 MH Transmission
- Engine Displacement: 5.9L/359 Cu. In.
- Torque: 610 lbs./ft. Max. Net at 1,600 RPM
- Block Heater
- Chrome Exhaust Tip
- 75 Gallon Fuel Tank
- Dual Fuel Fill
- 160 Amp Alternator
- Rear Axle Ratio: 4.78:1
- Radial Tires: 255/70R/22.5
- Stainless Steel Wheel Simulators
- Four Gas Shock Absorbers
- Four Air Bags
- Anti-Lock Braking System with Full Air Brake
- Pre-Wire for Supplemental Braking System
- Air Cleaner Restriction Indicator
- Fuel/Water Separator
- Remote Transmission Fill
- Fully Automatic Hydraulic Leveling System
- 7,000 Lb. Hitch Receiver with Dual Connector 4-Pin or 7-Pin

COCKPIT: FEATURES

- New Fiberglass Automotive Dash with Oxford Burl Instrumentation Panel
- Power Sunvisors
- Pilot and Co-Pilot Side Window Pull-Down Sunshades
- Front Cab over TVs Secured with Steel Framing
- Intermittent Windshield Wipers
- 6-Quart Tank for Windshield Fluid
- Tilt/Telescopic Steering Wheel
- Cruise Control
- Power Steering
- ICC Light Switch on Driver's Side Console
- Electric Automotive Horn
- Molded Co-Pilot Side Console with Two-Tier Cup Holder and Map Pocket
- New Molded Pilot Side Console with Two-Tier Cup Holder
- Six-Way Power Pilot Seat
- Seatbelt Warning Light on Dash
- Carpeted Driver and Passenger Floor Mats

OPTIONS

- Auxiliary Defroster
- Six-Way Power Co-Pilot Seat
- Sirius Satellite Radio System with 6 Months Pre-Paid Activation
- Interior Solar Privacy Screens

SAFETY: FEATURES

- Fire Extinguisher
- Deadbolt Lock on Entrance Door
- 120V GFI Protected Circuit Kitchen, Bath, and Exterior
- LP Gas Detector
- Smoke Detector
- Carbon Monoxide Detector
- Driver and Passenger Three-Point Seatbelts
- Third Brake Safety Light
- Egress Window

APPLIANCES AND ACCESSORIES: FEATURES

- Large Double-Door Refrigerator with Ice Maker 8 Cu. Ft. (N/A: 34SBD)
- High-Output 3-Sealed-Burner Cooktop
- Removable Solid Surface Range Covers
- Spacesaver Convection Microwave
- 24" Stereo Color TV with Remote Control in Cockpit Overhead
- TV Antenna
- DVD and Video Control Box with Booster and RF Modulator; Control Boxes Allow DVD Player to Play Video in Bedroom TV
- Video Control Box
- Wiring for DVD Player Hook-Up to Both TV Locations
- Exterior Hook-Ups for DSS Dish and Cable
- Digital Satellite System Prep
- Interior Cable TV Hook-Up and Telephone Jacks
- Exterior Gas Line Hook-Up Prep for LP Accessories

OPTIONS

- Large Double-Door Refrigerator with Ice Maker 10 Cu. Ft.
- Large Four-Door Refrigerator with Ice Maker (N/A with Pantry)
- High-Output 3-Sealed-Burner Range with Oven
- Washer/Dryer Prep
- Combination Washer/Dryer
- Central Vacuum System
- Home Theater Surround Sound System with Sub-Woofer, Added to In-Dash Stereo with DVD Player
- Fully Automatic Digital Satellite System
- Exterior Entertainment Center, CD Player Radio with Two Speakers

INTERIOR: FEATURES

- New Vintage Oak Cabinetry
- Raised Panel Cathedral Upper Cabinet Doors; Lower Cabinet Doors and Wardrobe Doors are Raised Panel
- Cabinet End Panels
- Hardwood Raised Panel Doors on Refrigerator
- New Wallpaper Border inside Private Bath
- Self-Supporting Top-Hinged Overhead Storage Doors, Except Side Wing Cabinet Doors inside Cockpit with Mini-Struts and Positive Catches on All Other Doors
- Heavy-Duty Ball Bearing Drawer Guides
- Wood Cabinet Drawer Boxes
- Metal Interior Grab Handle Floor to Dash
- Satin Nickel Cabinetry Hardware and Bath Accessories
- Integrated Cup Holder in Slide-Out next to Sofa
- Solid Surface Kitchen Countertop with Under-Mounted Stainless Steel Sink with Two Sink Covers
- Pullout Countertop Extension with Two Drawers Built In (N/A: 36PDQ)
- Toe Kicks Kitchen and Bath Base Cabinets
- Kitchen Countertop End Splash (36PDQ)
- Solid Surface Bath Lavatory Countertop with Integrated Bowl
- All Other Countertops Laminated with Wood Edge except Kitchen and Bath Lavatory
- Kitchen Overhead Cabinets with Adjustable Shelf
- Kitchen Pantry next to Refrigerator with Roll-Out Storage in Upper Cabinet and Three Drawers below (N/A with Four-Door Refrigerator Option) (N/A: 34SBD)
- Kitchen Pantry next to Refrigerator with Adjustable Shelves in Upper Cabinet and Three Drawers below (N/A with Four-Door Refrigerator Option) (34SBD)
- Second Kitchen Pantry next to Refrigerator (37PBD with Roll-Out Storage in Upper Cabinet and Three Drawers below)
- Bevel V-Grooved Mirror behind Stove Area
- Laminate Tile Flooring in Kitchen, Bath and Entryway
- Upgrade Nylon Carpeting with Pad in Living Area and Bedroom
- Engine Rug Cover (N/A: 34SBD, 37PBD)
- Soft Touch Padded Vinyl Ceiling
- Wood Slide-Out Fascia with Vinyl Inserts
- Elongated Octagon Beveled Edge Mirror (N/A: 37PBD)
- Wood Trim for Bath Door Opening Hallway Side
- Wood Trim on Bath Door Opening Hallway Side (Door Casing Trim)
- French Style Door into Bedroom (36PDQ)
- Wood Grain Crown Molding in Bedroom and Living Area on All Open Walls
- Medicine Cabinet
- Bathroom Lavatory Mirror
- Oversized Rear Wardrobe Closet with Deluxe Satin Nickel Mirrored Door Frames (N/A: 34SBD, 37PBD)
- Bedroom Swing-Away TV Cabinets with Bedroom TV Option (N/A: 36PDQ)
- Bedroom Dresser Foot of Bed with Drawers with Large Window (36PDD, 38PBT)
- Curbside Bedroom Slide-Out Wardrobe with TV Cabinet (34SBD)
- Bedspread with Reverse Sham for Pillows
- Decorative Fabric Headboard
- Blackout Day/Night Pleated Shades in Living Area and Bedroom
- Mini Blinds in Kitchen and Bathroom
- Soil Repellant Fabric Protection

OPTIONS

- Decors: Moroccan Sunset, Indigo Palms, Great Lakes, Silver Circle
- Tile Runner from Entry Tile to Kitchen
- Wood Choice: Newport Cherry, Champagne Select

HOLIDAYRAMBLER.COM

Log on to our website anytime, night or day. It's your link to everything Holiday Rambler, including product news and updates, club events, dealer and service center info and much more. Take it for a test drive today.





FURNITURE: FEATURES

- Queen Bed with Overhead Cabinet and Nightstands
- Party Table behind Co-Pilot Seat (36PDD)
- Arched Back Wood Booth Dinette with Legless Dream Dinette Countertop and 30" Drawer
- Forward-Facing Seatbelts in Booth Dinette inside Living Area Slide-Out
- Roadside: Fabric Jackknife Sofa (N/A: 36PDQ)
- Roadside: Fabric Swivel Glider Barrel Chair (36PDQ)
- Curbside: Fabric Love Seat (38PBT)
- Curbside: Fabric Jackknife Sofa (N/A: 36PDD, 38PBT)
- Curbside: Fabric Swivel Glider Barrel Chair (36PDD)

OPTIONS

- Roadside: New Style Soft Touch Vinyl Swivel Recliner IPO Fabric Swivel Glider Barrel Chair (36PDQ)
- Roadside: OptimaLeather™ Euro-Recliner with Heat, Massage and Ottoman IPO Fabric Swivel Glider Barrel Chair (36PDQ)
- Roadside: Fabric Hide-A-Bed Sofa with Air Mattress and Two Pillows (N/A: 36PDQ)
- Curbside: New Style Soft Touch Vinyl Swivel Recliner IPO Fabric Swivel Glider Barrel Chair (36PDD)
- Curbside: OptimaLeather™ Euro-Recliner with Heat, Massage and Ottoman IPO Fabric Swivel Glider Barrel Chair (36PDD)
- Curbside: One OptimaLeather™ Euro-Recliner Chair with Heat, Massage and Ottoman, and Desk Work Area IPO Love Seat (38PBT)
- Curbside: One OptimaLeather™ Euro-Recliner Chair with Heat, Massage and Ottoman, and Wall-Mounted Table with Pullout Countertop IPO Jackknife Sofa (34SBD, 37PBD)
- Curbside: Soft Touch Vinyl Love Seat IPO Fabric Love Seat (38PBT)
- Curbside: Soft Touch Vinyl Jackknife Sofa IPO Fabric Jackknife Sofa (N/A: 36PDD, 38PBT)
- Curbside: Fabric Hide-A-Bed Sofa with Air Mattress and Two Pillows (36PDQ)
- Freestanding Dinette with Two Freestanding Chairs and Two Folding Chairs

ELECTRICAL SYSTEMS AND LIGHTS: FEATURES

- 50 Amp 120V Distribution Panel and Power Cord
- Energy Management System
- 60 Amp Electronic 12V Power Converter
- Onan® 5.5 kW Diesel Generator
- Two 6V House Batteries
- Two 12V Heavy-Duty Chassis Batteries
- Battery Disconnect Switch at Front Door
- 12V and 110V Outlet in Cockpit Area, 110V Outlet
- Porch Light and Exterior Step Light on Same Switch
- Exterior Power Double Entry Step with Light
- Interior Stepwell Entry Step Lights
- Water Pump Switch in Service Bay Area and Convenience Center
- Lights in Outside Storage Compartments
- 110V Receptacles in Outside Storage Compartment
- Underhood Utility Light
- Receptacle and Phone Jack in Dinette Area
- New Style Directional Map Lights Pilot and Co-Pilot Seats
- Hallway Convenience Center
- Storage Compartment Tank Monitor Gauge
- Fluorescent Lights under Kitchen Overhead with Night Light
- Fluorescent Ceiling Lights Throughout
- Fluorescent Ceiling Lights inside Living Area Slide-Out House
- Decorative Wood Framed Galley Ceiling Fluorescent Light
- Decorative Lighting Satin Nickel Living Room Wall Light, Dinette Overhead and Cosmetic Vanity Light

- Halogen Lights under Living Room, Dining Room, and Bedroom Dresser Overhead Cabinets
- Satin Nickel Bullet Lights over Bed Brass Finish with His and Hers Switches

OPTIONS

- 2,000 Watt Inverter with Two Additional Batteries (4 Total, 6 Volt Batteries)
- Manual Retracting Power Cord Reel (N/A: 34SBD)
- Onan® 8.0 kW Quiet Diesel Generator

PLUMBING AND LP SYSTEMS: FEATURES

- Kitchen Under-Mounted Stainless Steel Sink with Single Lever Satin Nickel Faucet with Pullout Sprayer
- Separate Satin Nickel Finish Faucet for Filtered Water
- Demand Water System and Water Pump
- 10 Gallon LP Gas/Electric Water Heater with Electronic Ignition, DSI
- Winterization Valving System
- Water Heater Bypass Valving
- Toilet with Sprayer
- No-Fuss Flush Holding Tank Rinsing System
- Insulated Systems Compartment with Easy Access to Hook-Up
- Shower inside Wet Bay with Hot/Cold Water; Shower Head with Shut-Off Soap Dispenser inside Utility Bay
- Gravity and Pressurized Water Fill
- Contained Storage Area for Sewer Hose
- One-Piece Fiberglass Shower
- Shower Faucet with Shower Hose and Head with Shut-Off
- Satin Nickel Shower Door Frame with Obscure Glass (34SBD, 36PDQ)
- Rounded Satin Nickel Shower Door Frame with Decorative Glass (N/A: 34SBD, 36PDQ)

OPTIONS

- RV Sani-Con 1 System, Holding Tank Flush System
- Bathtub IPO Shower (Rounded Shower Stalls will be Neo-Angled with Tub Option)

HEATING, VENTS AND AIR CONDITIONING: FEATURES

- Dual 13.5M BTU Air Conditioners with Ducted Air and Digital Wall Thermostat
- Electronic Ignition Furnace
- Electronic AC/Heat Climate Control System
- In-Floor Ducted Heating System
- Kitchen Powered Attic Fan with Wall Control of Automatic Dome and Fan Power
- Bath Powered Attic Fan with Wall Control of Automatic Dome and Fan Power
- 12V Heater in Wet Bay, Heat Pad on Fresh Tank
- Metal Floor Registers Satin Nickel

OPTIONS

- Dual 13.5M BTU Air Conditioner with Heat Pumps and Digital Thermostat Control
- Ceiling Fan in Bedroom
- Fantastic 12V Attic Fan with Rain Sensor with Electronic Wall Thermostat Kitchen

WINDOWS, DOORS AND AWNINGS: FEATURES

- Dual Pane Sliding Flush-Mounted Windows
- Front Entry Door with Clear Glass, Removable Screen, and Anti-Skid Steps
- Exterior Entry Door Grab Handle
- Two Interior Grab Handles
- Poly-Weave Front Door Awning
- Topper Slide-Out Awnings Living Area and Bedroom
- Tinted Skylight in Bathroom with Protecta Glaze

OPTIONS

- Poly-Weave Sidewall Bedroom Window Awning with Metal Cover and Painted Hardware (N/A: 36PDQ, 36PBQ)
- Poly-Weave Window Awning Living Area Slide-Out House Windows with Metal Cover and Painted Hardware
- Poly-Weave Window Awnings Bedroom Wardrobe Slide-Out House Window with Metal Cover and Painted Hardware (36PDQ, 36PBQ, 37PBD)

Weights (Lbs.)*	34SBD	36PBQ	36PDD	36PDQ	37PBD	38PBT
Gross Vehicle Weight Rating	27,500	27,500	27,500	27,500	27,500	27,500
Gross Combined Weight Rating	37,500	37,500	37,500	37,500	37,500	37,500
Gross Axle Weight Rating (Front)	10,000	10,000	10,000	10,000	10,000	10,000
Gross Axle Weight Rating (Rear)	17,500	17,500	17,500	17,500	17,500	17,500

Measurements

Wheelbase	204"	228"	228"	228"	240"	252"
Overall Length	TBD	TBD	TBD	TBD	TBD	TBD
Overall Height (Including A/C)	12' 8"	12' 8"	12' 8"	12' 8"	12' 8"	12' 8"
Interior Height (Increased Height to 84")	84"	84"	84"	84"	84"	84"
Interior Width	94.5"	94.5"	94.5"	94.5"	94.5"	94.5"
Exterior Width	100.5"	100.5"	100.5"	100.5"	100.5"	100.5"

Tank Capacity (Gal.)**

Water Heater	10	10	10	10	10	10
Gray Tank	55	55	55	55	55	55
Black Tank	39	39	39	39	39	39
Fresh Tank	95	95	95	95	95	95
Fuel Tank	75	75	75	75	75	75
LP Tank***	38	38	38	38	38	38

* Towing capacity is limited by GCWR; your vehicle's towing capacity is the difference between the GCWR and the actual vehicle weight, including all water, fuel, passengers and cargo. Your towed vehicle should be equipped with auxiliary brakes if the weight of the towed vehicle exceeds 1,000 lbs. Consult your Owner's Manual for further towing information.

** All tank capacities are estimated based upon calculations provided by the tank manufacturers and represent approximate capacities. The actual "usable capacity" may be greater or less than the estimated capacities based upon fabrication and installation of the tanks.

*** Actual filled LP capacity is 80% of listing due to safety shut-off required on tank.

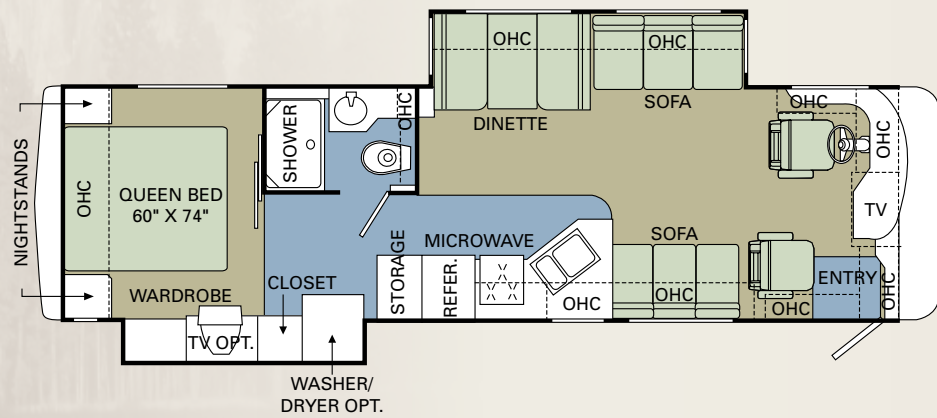
The actual overall length of the recreational vehicle may differ from that indicated in the brochure due to variances in the manufacturing process and/or installed components. The actual length may be greater or less than that indicated. Due to the large variety of options and floorplan arrangements available to our customers, actual weights for each unit can differ significantly. Holiday Rambler provides a weight sticker on each unit we produce which includes that unit's tank capacities and approximate weight. Consult your local Holiday Rambler dealer for unit availability and further information. The information printed in this brochure reflects product design, fabrication, and component parts at the date of printing. The manufacturer reserves the right, at any time, to make changes in product design or material or component specifications as its sole option, without notice. This includes the substitution of components of a different brand or trade name which will result in comparable performance. All information printed in this brochure is subject to change after the date of printing. Some features shown or mentioned in this brochure are optional and may only be available in selected floorplans. Photographs may show props or decorations that are not standard equipment on Holiday Rambler models. Holiday Rambler, the Holiday Rambler logo and its design, are registered trademarks. All other products and company names are trademarks and/or registered trademarks of their respective holders. While the color of the motorhome's exterior and the interior fabrics depicted in this sales brochure are fair and reasonable depictions, the colors depicted may not be an exact match of the actual colors because of the variances in photo-processing and variances caused by inserting the photographs within the sales brochure. Due to product improvements, changes during the model year and/or transcription errors that may occur, information represented within this brochure may not be accurate at the time of your purchase. If certain information is significant to your purchasing decision, please confirm the information with your dealer prior to submitting your order. Component part and appliance manufacturers issue limited warranties covering those portions of the recreational vehicle not covered by the Limited Warranties issued by Monaco Coach Corporation. To learn which specific component parts and appliances are excluded from the Limited Warranties issued by Monaco Coach Corporation, please contact your selling dealership or Monaco Coach Corporation directly, or review the warranty packet inside the recreational vehicle.

2007 FLOORPLANS

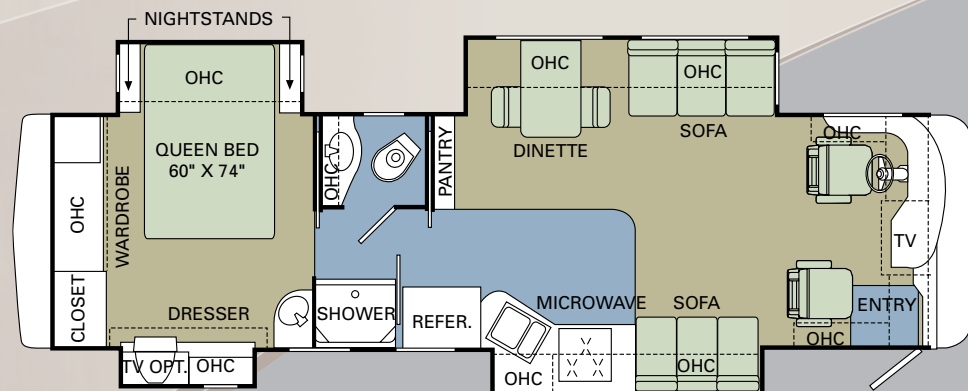
CARPET

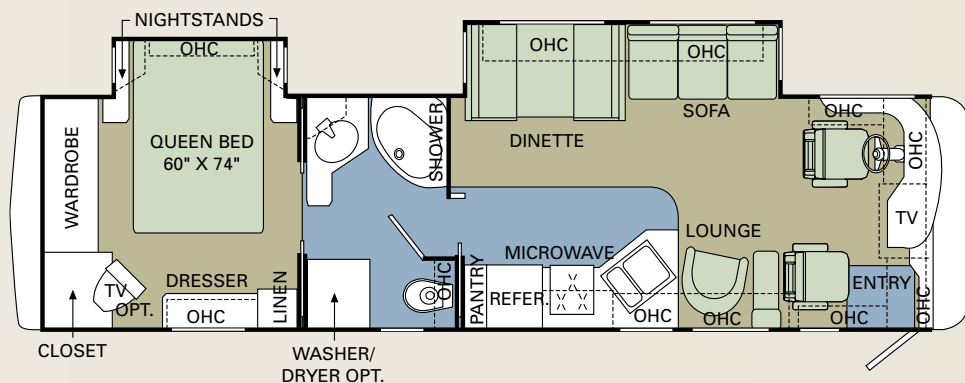
TILE

34SBD

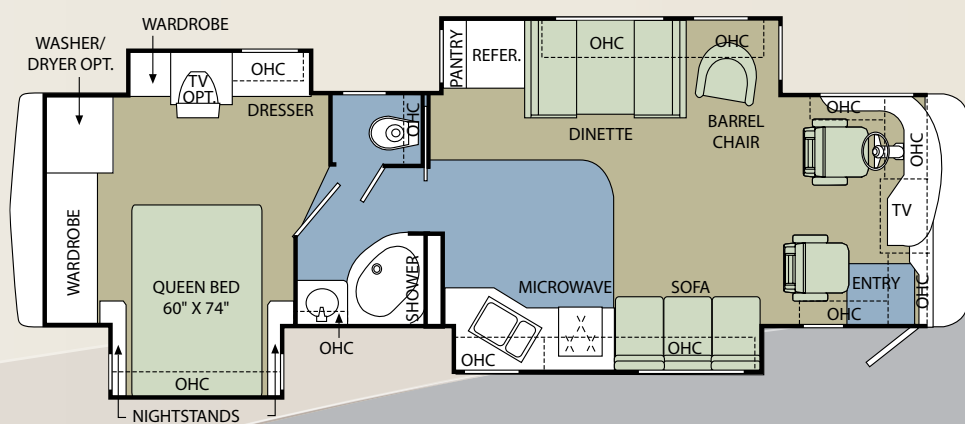


36PBQ

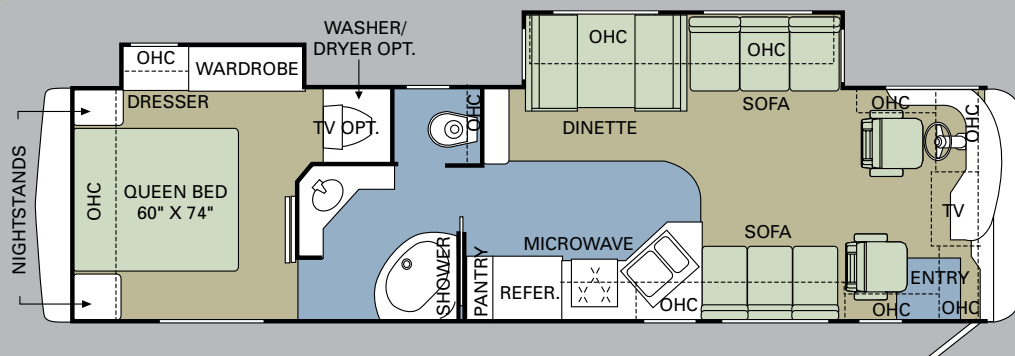




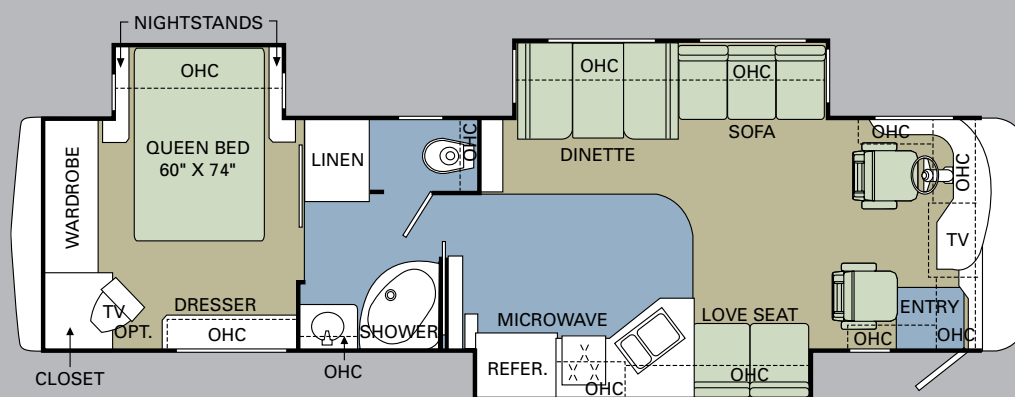
36 PDD



36 PDQ



37 PBD



38 PBT



2007 NEPTUNE®

THE POWER BEHIND THE NAME.

At Holiday Rambler, every one of our RVs shares something special – something that's hard to describe, but easy to recognize. It's that unique touch that makes Holiday Rambler stand apart. It's our complete dedication to quality at every level – from the designers who create unique looks to the craftsmen who apply the finishing touches. It's our unbeatable service, which gives you 24-hour availability, 365 days a year. It's a commitment to safety and a tradition of innovation. And finally, it's the best people in the business. The Holiday Rambler difference. It's in every RV we make – including yours.



HOLIDAY RAMBLER®

This is Living®

DEALER:

606 Nelson's Parkway Wakarusa, IN 46573
www.holidayrambler.com (800) 245-4778



ASSISTANCE

SALES • TECH • ROADSIDE



WE'RE HERE.

ANYTIME, EVERY TIME.

- Reach us anytime – literally – via our live customer support line.
- Drive in to one of our 350 Service Centers.
- Enjoy the first year free when you enroll in our Owner Advantage Roadside Assistance Program.
- See where it all begins with a tour of one of our facilities in Indiana or Oregon. Call 1-800-650-7337 or 1-800-634-0855 to find out more.

WARRANTIES

12 MONTH/24,000 MILE
basic limited warranty

5 YEAR/50,000 MILE limited
warranty on aluminum or steel
frame structure of sidewall,
roof, front and rear cap

3 YEAR/36,000 MILE limited
warranty on Roadmaster chassis

Applies to certain models. See owner's
manual for complete details.



MONACO COACH CORPORATION

Monaco is traded on the New York Stock Exchange under the listing MNC.
© 2006, Monaco Coach Corporation 6/06 NPN:BROHNEP Litho in USA.

MNC
LISTED
NYSE

