

2005 SPORTSCOACH® ELITE DIESEL MOTORHOMES



SPORTSCOACH®  
ELITE



**THE DIESEL AUTHORITY**



# Navigation

Sportscoach® Elite delivers an enjoyable driving experience with a smooth level ride, superb handling characteristics and ergonomically designed driver controls. But, the satisfaction of owning a Sportscoach® Elite goes far beyond the driving experience. Inside, there is a rich selection of luxurious amenities that is seemingly endless and a remarkable attention to detail.

Whether it is the thrill of a powerful 350 horsepower diesel engine, the cavernous basement storage, or the luxurious appointments and features found throughout, the Sportscoach® Elite is the perfect combination of strength and beauty.



The ergonomically designed dash, side overhead storage compartments, two tone captains chairs with integrated 3-point seat belts and optional powered sunvisors are just a few of the amenities that add to the safety, style and functionality of the Sportscoach® Elite. (Shown in Cambridge Cameo décor selection with Brazilian Cherry cabinetry)







The optional driver and passenger **powered sunvisors** give you the ultimate sun block and improved visibility at the touch of a conveniently located button.

.....

The leather 6-way power pilot seats feature **3-point seat belts** with a shoulder harness that is integrated into the chair structure, rather than mounting the shoulder harness to the sidewall.

.....

Sportscoach® Elite features a driver friendly custom dash with easy to read gauges and easy to reach controls. The **"Smart Wheel"** steering wheel places many of the commonly used controls at your fingertips...adjust the windshield wipers, and turn on your headlights without taking your eyes off of the road.





# Elegant Living







The Stanford innerspring booth dinette is a standard feature on the Sportscoach® Elite. This unique dinette is unparalleled in comfort and extremely durable with steel framing and hinged seats for easy access to the under booth storage (residential dinette with 4-chair option).

The Sportscoach® Elite 401TS features a stunning entertainment center in the door side slideout. A standard 27" flatscreen television and fireplace with remote are just a couple of the fine touches that make this coach so appealing.



The Sportscoach® Elite is well equipped with many luxurious appointments, such as: fireplace w/remote, 27" flatscreen television, solid surface countertops, convection microwave, ceramic tile floor, sculpted carpet, designer valences and furniture, and crown molding throughout. (Shown in the Oakwood Sable décor selection and Eagle Walnut cabinetry)

Commonly used switches and gauges are designed into one easy to use panel conveniently located in a cabinet above the entrance door. The command center includes the monitor panel, generator panel, water pump switch, water heater switch, tank heater switch and slideroom controls. The Energy Management System and inverter monitors are also accessible from this location.



# Residential Appeal



All Sportscoach® Elite floorplans offer an abundance of countertop and cabinet storage space on every floorplan. A flip up countertop end, flush mounted range cover, and sink covers all combine to give you plenty of uninterrupted countertop space for food preparation.



A stainless steel refrigerator is standard equipment on all Sportscoach® Elite motorhomes. This large refrigerator features four doors, an automatic ice-maker, and plenty of storage space.



The extra deep double bowl kitchen sink and deluxe Moen faucet with detachable sprayer head are as attractive as they are functional. There is also a purified drinking faucet for clean and refreshing drinking water.



The custom solid surface range cover features a bi-fold design that easily lifts up for access to the three burner range. A standard convection microwave with integrated range hood, is the perfect way to brown or bake your favorite meals.





The bedroom suite features a spacious bed slideout with a residential 74" x 80" king bed option. A designer headboard and directional overhead reading lights are just a couple of the finer details that will make your travels more enjoyable.

---

A unique sink and vanity area in the bedroom is combined with ample drawer and overhead cabinet storage. The extra long countertop area provides great space to set out your essentials to get you ready for the day.



Spacious wardrobe closets are upgraded with a cedar lining to keep your clothes fresh and like new.



The bedroom television is conveniently disguised behind a hardwood cabinet door. Simply open the cabinet door and the 20" flatscreen television swivels out on a platform for easy viewing.

# Additional Features

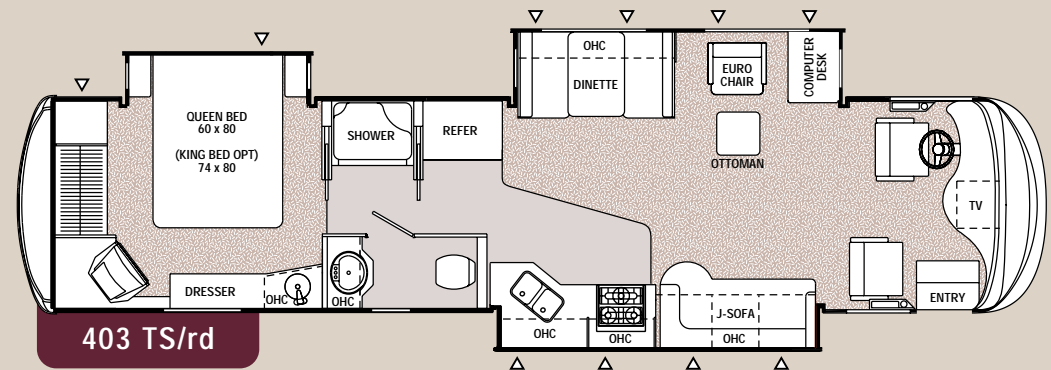
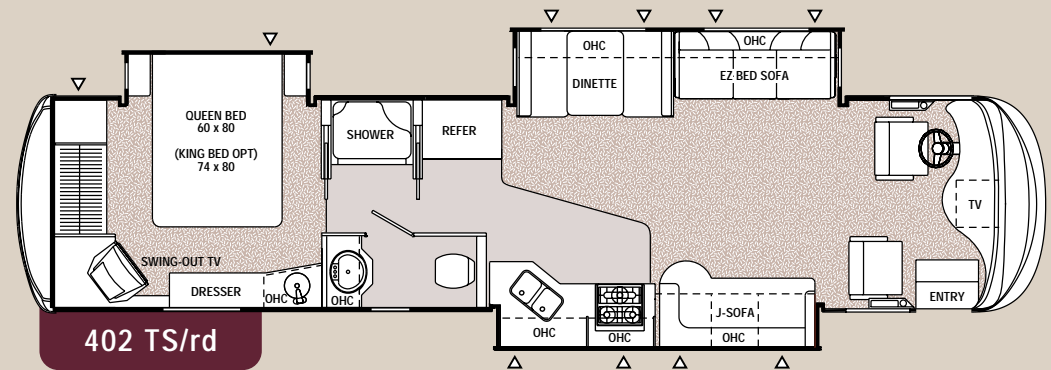
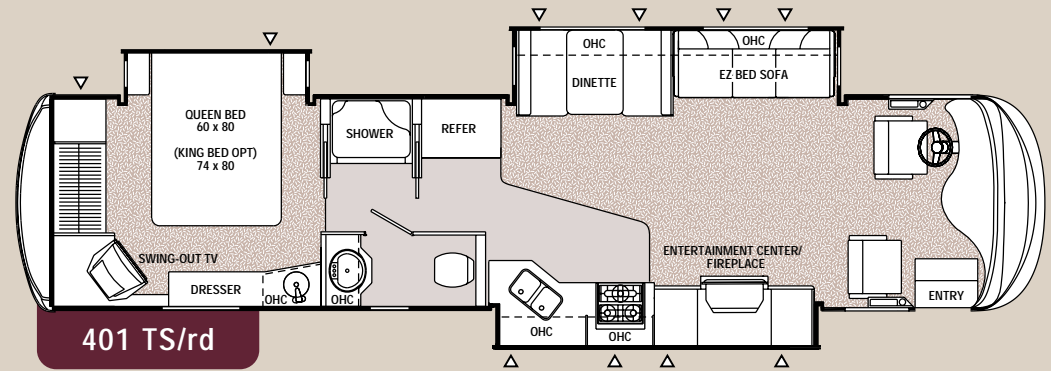


- A. The optional **Diamond Shield front end paint protection** is your invisible alternative to a large plastic shield protruding from the front of your unit. The clear adhesive mask is durable paint protection for your unit.
- B. The **overhead mounted windshield wipers** are mounted up high and out of the way to minimize any obstruction of view. They also offer superior water removal and a high line look.
- C. The **Sight Rite™ lower dash cowl** is angled downward at 20 degrees for an increased line of sight that is closer to the front of the unit.
- D. The optional **exterior entertainment center** features a 20" flatscreen television that pulls out on a swivel tray, and an AM/FM CD player.
- E. No need to worry about maneuvering around a small gas station parking lot. Pull up to either side of the pump with **duel fuel fills** that are conveniently located on both sides of the unit.
- F. Standard **powered step well covers** extend with the touch of a button to give the passenger a flat floor to rest their feet on as they travel. The step well cover easily retracts once you reach your destination.
- G. Cavernous exterior **basement storage** provides tons of uninterrupted storage space for all of your gear. The pass through design and optional steel slide trays let you easily access your stored items from either side of the coach.



## Sportscoach® Elite Floorplans

- △ INDICATES OUTSIDE STORAGE LOCATION
- INDICATES CARPETING





# Specifications

Chassis	401 TS Freightliner	402 TS Freightliner	403 TS Freightliner
Chassis Model	XC	XC	XC
Engine Horsepower	350	350	350
Wheel Base	252"	252"	252"
Rear Axle Ratio	4.78	4.78	4.78
Tire Size	275/80R22.5G	275/80R22.5G	275/80R22.5G
GVWR (lbs.)	32,000	32,000	32,000
CW (lbs.)	25,941	25,922	25,767
GAWR Front (lbs.)	12,000	12,000	12,000
GAWR Rear (lbs.)	20,000	20,000	20,000
GCWR (lbs.)	42,000	42,000	42,000
Exterior Length	40'0"	40'0"	40'0"
Exterior Height**	12'1"	12'1"	12'1"
Exterior Width	8'6"	8'6"	8'6"
Sleeping Capacity	4	4	4
Interior Width	96"	96"	96"
Interior Height	79"	79"	79"
Fuel Capacity (gal.)	100	100	100
Alternator Amps	160	160	160
Fresh Water Capacity (gal.)	68	68	68
Grey/Waste Water Capacity (gal.)	51/46	51/46	51/46
Water Heater Capacity (gal.)	10	10	10
LP Gas Capacity (lbs.)	174	174	174
Furnace Rating (x1000) BTU	25/25	25/25	25/25

† Estimated

\*\* Includes clearance for roof A/C

**GVWR (Gross Vehicle Weight Rating):** The Maximum permissible weight of the unit, including the UVW plus all fluids, cargo, optional equipment and accessories. For safety and product performance, do not exceed the GVWR.

**CW (Curb Weight):** The weight of the unit without factory or dealer installed options, plus allowance for the weight of full fuel capacity. The "payload capacity" for all other fluids, cargo, occupants, optional equipment and accessories can be determined by subtracting the CW from the GVWR.

**GAWR (Gross Axle Weight Rating):** The total weight each front/rear axle, suspension and tire system is designed to carry. When loading the unit, care should be taken to balance cargo weight in consideration of the GAWRs.

**GCWR (Gross Combined Weight Rating):** The maximum total weight of the loaded unit, plus a tow vehicle. This includes the weight of both the unit and tow vehicle, fuel for each, all other fluids, cargo, occupants, optional equipment and accessories.

**Wider Widths:** Numerous Sportscoach floorplans feature the "wide body" design concept, which gives you significantly enhanced interior living space and innovative floorplans.

In making your purchase decision, you should be aware that a few states restrict access on some or all roads within the state to vehicles with a maximum 96" width, although special road usage permits may be available. Vehicles up to 102" in width are permitted in the vast majority of states. You should confirm the road usage laws in the states of interest to you before making your purchase decision.

**IMPORTANT NOTE:** All capacities are approximate, and all dimensions are nominal. Sportscoach motorhomes are designed to allow for a wide variety of uses, extended trips with two people or short trips with multiple people. Accordingly, each unit allows ample room for sleeping, seating, fluids and cargo. While the customer is the beneficiary of this design, the customer also bears the responsibility to select the proper combination of passengers, cargo, load, and tow vehicle without exceeding the chassis weight capabilities. Consumer may need additional braking capacity to tow loads greater than 1,000 pounds.

Seat belts should always be worn for passenger safety. Seat belts are provided at most locations to allow convenience in selecting which seat to occupy. However, it is not intended that all seating positions equipped with a seat belt may be occupied while the vehicle is in motion, without regard to other weight factors.

All Sportscoach motorhomes are designed to ensure that the number of passengers allowed while the vehicle is in motion will always at least equal the stated sleeping capacity. Though extra seat belts may be provided, for your safety and the proper operation of your vehicle, limit your passengers to the number allowed by the Net Carrying Capacity of your vehicle.

All information contained in this brochure is believed to be accurate at the time of publication. However, during the model year, it may be necessary to make revisions and Sportscoach reserves the right to make all such changes without notice, including changes in prices, colors, materials, equipment and specifications, as well as the addition of new models and the discontinuance of models shown in this brochure. Therefore, please consult with your Sportscoach dealer and confirm the existence of any materials, design or specifications that are material to your purchase decision.

## Paint Options





# Standards Features

## INTERIOR APPOINTMENTS

- Brazilian Cherry Cabinetry
- Padded Vinyl Ceiling
- Raised Panel Cabinet Doors
- Hardwood Doors & Drawer Fronts
- Residential Metal Drawer Guides
- Techwood Drawer Sides
- Ceramic Tile Flooring (Kitchen, Bath & Entry Way)
- Day / Night Shades Throughout
- Deluxe Sun Visors
- Deluxe Leather 6-Way Power Pilot Seats w/3-Point Seat Belts, & Adjustable Arms (Oversized Passenger Seat w/Power Footrest)
- Electric Step-Well Cover
- Leather Euro Chair & Ottoman (403TS)
- Sleeper Sofa—Off Door Side (Except 403TS)
- J-Lounge Sofa—Door Side (402TS & 403TS)
- Computer Desk (403TS)
- Hidden Cabinet Hinges
- Deluxe Stanford Booth Dinette
- Tinted Thermopane Windows

## INTERIOR EQUIPMENT

- 27" Flat Screen Color Television-Coach
- 20" Flat Screen Color Television-Bedroom
- AM/FM CD w/4 Speakers
- TV Antenna & Rotor Package
- Prewired for Satellite Dish
- Cable TV Jack
- LP Leak Alarm
- Smoke Detector
- Carbon Monoxide Detector
- Fire Extinguisher
- Phone Jack
- Dual Zone Comfort Control Thermostat
- XFM Ready Dash Radio
- VCR Player
- Firereplace w/ Remote (401TS)

## GALLEY

- Extra Wide Convection Microwave Oven w/Range Vent & Light
- 3-Burner (High Output) Range Top w/Sealed Burners
- Stainless Steel 4-Door Refrigerator
- Monitor Panel
- Solid Surface Kitchen Countertop & Sink
- Upgraded Faucets Throughout
- Silverware Drawer

## BATH & WATER

- Single Pedal Porcelain Toilet
- Textured Glass Shower Door
- Power Bath Vent
- 10 Gallon Gas/Electric Water Heater
- Pump Switch at Termination
- Demand Water Pump
- Medicine Cabinet
- Skylight Over Shower
- Fiberglass Shower

## ELECTRICAL/HEATING/AC

- 50 Amp. Detachable Power Cord
- 55 Amp., 110/12-Volt Power Converter
- 6.5 KW LP Generator (Marquis Gold)
- GFI Circuit
- Outside Receptacle (DS)
- Emergency Start Switch
- Coach & Chassis Battery Disconnect
- Auxiliary Batteries
- Patio Light
- Rear Vision Camera
- (2) 25,000 BTU Furnaces
- Low Profile 13,500 BTU Ducted Roof A/C (Front & Rear)
- 175 lb. LP Tank
- Fluorescent Lighting in Living Area
- Fantastic 3-Speed Roof Vent
- Washer/Dryer Ready

## SLEEPING

- California Queen Bed (60" x 80")
- Deluxe Innerspring Mattress w/312 Coil

- Residential Style Headboard
- Bedspread & Pillow Shams
- Privacy Drape-Cab
- Clock/Radio in Bedroom

## AUTOMOTIVE/EXTERIOR

- Defroster Fans
- Telescoping Tilt Steering Wheel
- Cruise Control
- Intermittent Wipers
- Dash Air Conditioning
- Heated Exterior Mirrors with Remote
- Auxiliary Driving Lights
- Fuel Fills, Both Sides
- Automotive Undercoating
- Semi-Automatic Hydraulic Leveling Jacks
- Chassis Air Suspension
- Raised Rail Chassis
- Air Brakes
- 350 HP Caterpillar Diesel Engine
- Radial Tires
- Deluxe Radius Entrance Door w/Dead Bolt Lock
- Entry Door Awning
- Patio Awning
- Rear Rockguard
- Power Entrance Steps-Double
- Rubber Entry Step Treads
- Laminated Floor & Laminated 2" Sidewalls
- Molded Fiberglass Roof
- 2-Stage Struts on Baggage Doors
- Aluminum Rims
- Basement Floor Design
- Aluminum Compartment Doors
- Driver's Side Sun Shade
- Full Paint Graphics (6-Choices)
- Exhaust Brake
- 10,000 Lb. Towing Hitch w/7-Way Plug
- Automotive High Gloss Exterior
- Air Horns
- Roof Ladder
- Pass Through Basement Storage
- Owner's Information Guide

## Optional Features

- Summit Maple Cabinetry
- Eagle Walnut Cabinetry
- Table w/2 Traditional Chairs & 2 Folding Chairs
- Leather Sleeper Sofa—Off Door Side (Except 403TS)
- Leather Sleeper Sofa w/Air Mattress (Except 403TS)
- Fabric Sleeper Sofa w/Air Mattress (Except 403TS)
- Leather J-Lounge Sofa—Door Side (402TS & 403TS)
- Designer Area Rugs
- Mobile Satellite Dish System
- Stationary Satellite Dish System
- Home Theatre System
- Combo: Washer & Dryer
- 7.5 KW Diesel Generator
- 2000 Watt Inverter / 100 Amp. Converter
- Heat Pumps
- Power Awning w/Power Entry Door Awning
- CSA Upfit<sup>(1)</sup>
- XFM Radio
- Power Sun Visor
- Exterior Entertainment Center w/20" Flatscreen Television & Stereo CD player
- Energy Management System
- Safe
- King Bed
- Steel Slide-Out Storage Tray(s)
- Double Clear Coat Paint
- Diamond Shield Front End Paint Protection

(1) Mandatory for all Canadian Provinces

Summit  
Maple

Brazilian  
Cherry

Eagle  
Walnut

## Decor Selections

Dazzling interiors feature skillfully coordinated upholstery and window treatments. All Sportscoach® models utilize top-grade fabrics wear-dated as heavy-duty. These fabrics have been tested for durability beyond 15,000 double rubs (in and out action) to simulate heavy usage. An average chair in an American home is subjected to only 3,000 double rubs per year.



Oakwood Sable – Main / Bedspread / Accent



Park Avenue Plum – Main / Bedspread / Accent



Cambridge Cameo – Main / Bedspread / Accent





# Thoroughbred™

PERFORMANCE PLATFORM

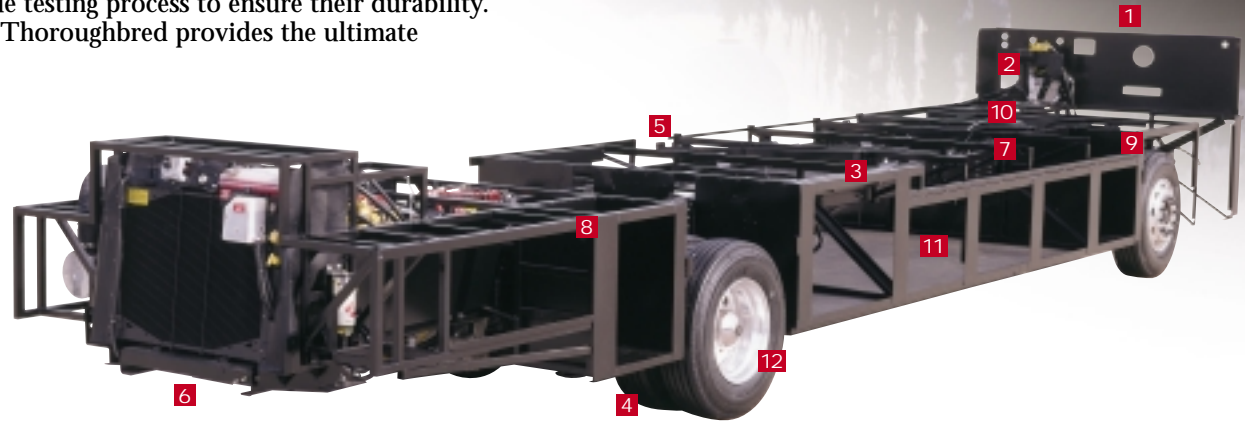
The *Thoroughbred* platform is integrated onto a Freightliner® Custom Chassis designed specifically for the high performance and durability of Sportscoach® Diesel motorhomes.

Thoroughbred platform construction begins on a laser-leveled stage that provides a true and level surface for the construction process. Through

the use of jigs and fixtures, each Thoroughbred platform meets the exacting specifications of a Sportscoach® Diesel Motorhome each and every time. All steel framework utilized on the Thoroughbred platform is stored in a climate controlled environment and painted with a rust inhibiting, water-based paint. The steel is then powdercoated for a long lasting, weather resistant finish. Sportscoach® uses only certified welders in the construction process, and all critical fasteners undergo a torque testing process to ensure their durability. A chassis platform is the foundation of a great coach, and the Thoroughbred provides the ultimate foundation. *Thoroughbred...Built for Performance.*

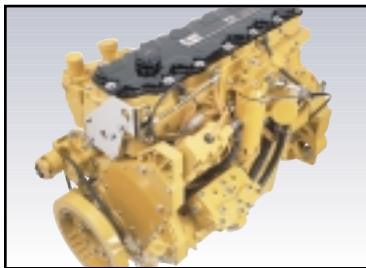
## Chassis Features

1. Thoroughbreds all steel bulkhead is lined with space-age sound deadening material to give you the quietest ride possible.
2. Standard tilt-and-telescoping steering wheel allows the drivers cockpit to be customized for all shapes and sizes.
3. For safety, the entire perimeter of the coach floor is protected by a 2" tubular steel crash barrier.
4. 22.5" Wheels with Michelin tires provide reliable contact with the road. The large tire size promotes a smoother and more comfortable ride.
5. Slideroom mounts are welded directly to the chassis for a solid and durable slideroom platform. Solid mounts resist torque or twisting of the slideroom.
6. The 10,000 lb. tow hitch provides ample capacity for a generous sized tow vehicle or a trailer full of toys.
7. Freightliner's 9" high steel frame rails are the tallest in the industry, and provide a solid foundation that minimizes coach stress.
8. All steel framework is painted with a water based, rust inhibiting paint, and then powdercoated for a long lasting finish.
9. Dual side fuel fills on every Sportscoach® make for easy and convenient fill-ups from either side of the coach.
10. Standard anti-lock air brakes and Jacobs exhaust brakes provide maximum stopping power and controlled steering during emergency stops.
11. The full pass through storage with pebblegrain flooring is insulated and heated. Enormous basement storage offers plenty of room for your stored items.
12. Upgraded aluminum wheels are a standard feature on all Sportscoach® Elite Diesel Motorhomes.

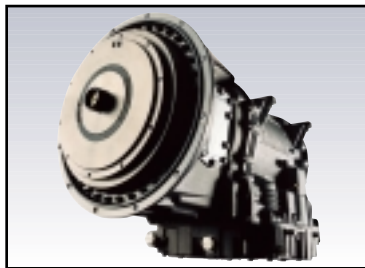


## OasisNetwork

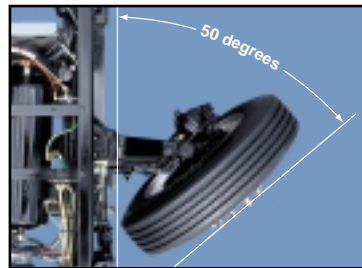
The Freightliner Oasis Network is a group of over 50 select dealerships across the country that cater to the motorhome user. Each service location has a dedicated facility with trained motorhome service technicians, a motorhome service area, secure parking for motorhome customers and additional amenities specifically for motorhome owners. No other chassis manufacturer can match the nationwide network of quality dealers servicing their chassis.



The Sportscoach® Elite boasts a 7.2L, 350hp Caterpillar turbocharged engine. At 860 lb/ft of torque, there is plenty of power to conquer the tallest of mountains.



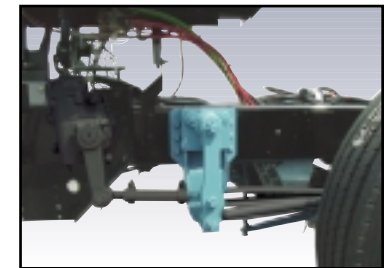
The Allison 6-speed MH-3000 transmission with touch pad selector provides the perfect complimentary drive train to ensure maximum performance of the Caterpillar engine.



50 degrees of wheel cut offers an extremely tight turning radius for superior maneuverability in tight locations. This translates up to a 25% tighter turning radius than many of the competitors.



Standard full air ride suspension offers a ride up to 30 percent softer than the traditional steel springs used on many competitors chassis. Four inboard mounted air bags hold more air than a conventional eight-spring system and provide less body roll and increased storage capacity.



The bell crank is designed into every chassis to provide a smooth steering response. "Bump Steer", which occurs when the steering wheel moves in reaction to the suspension, is virtually eliminated.



# Discover the SPORTSCOACH® Advantages

## Service after the sale

- **Industry Leading Buckstopper™ Warranty** – The exclusive Buckstopper™ Limited Warranty provides one-year coverage on most parts, components and appliances. Sportscoach® Diesel Motorhomes are supported by a network of over 300 service centers across the country.
- **Two Year Structural & Major Components Manufacturer's Warranty** – All Sportscoach® Motorhomes have a two-year structural and major components manufacturer's warranty, along with a complete written Warranty Summary Guide, for your peace of mind.
- **Comprehensive Owners Information** – For your convenience we offer published materials on key equipment and options, as well as information pertaining to the function of important components. We also offer a true Trouble Shooting & Maintenance Guide for the simple answers to frequently asked questions.
- **Toll Free Service Numbers** – Our toll free phone numbers provide you with direct access to a Sportscoach® Service Representative.

- **Dealer Support Tools** – Dealers are well equipped and trained to service your needs with: Systems Manuals, PDI Manuals, Electronic Parts Catalogs, Coach-Link® "On-Line" Electronic Dealer Communication System, and continual service training.
- **Service Support Center Web Site** – You are provided access to key information 24-hours a day through the Internet. On-line you can find a Service Dealer Locator, Maintenance Information, Trouble Shooting Information, Product Warranty Information, Customer "E-Assistance", Frequently Asked Questions (FAQ's), and Publications ordering dating back to 1972 models.
- **Priority Parts Ordering** – Provides a program for overnight parts shipment in critical repair situations.



## Life in the Fast Lane

NASCAR driver Mike Wallace makes a Sportscoach RV motorhome his home on the road. The middle brother of auto racing's famed Wallace family, Mike is a veteran of NASCAR's racing circuit.



..... YOUR SPORTSCOACH® PROFESSIONAL .....

Coachmen Recreational Vehicle Company, LLC

Visit Our Website At: [www.coachmenrv.com](http://www.coachmenrv.com)

P.O. Box 30, Middlebury, IN 46540 • P.O. Box 948, Fitzgerald, GA 31750