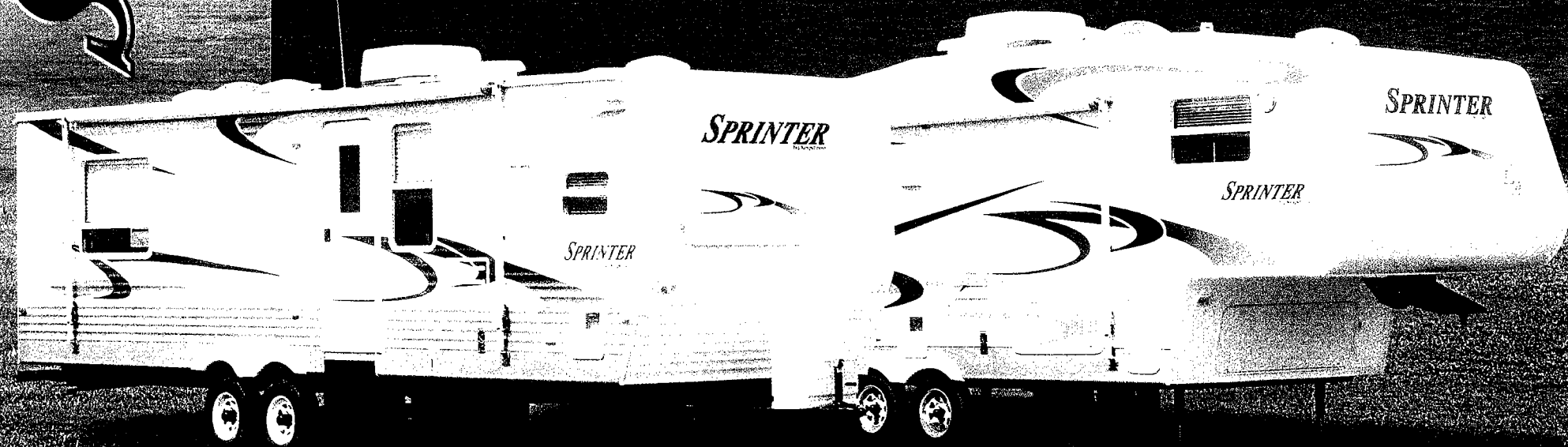


# SPRINTER

by Keystone

TRAVEL TRAILERS AND FIFTH WHEEL

2004



*You don't have to settle...*



## GREETINGS,

By utilizing our customer's wants, needs and desires as the foundation of our design, Sprinter has quickly become one of the top selling brands in America.

Customers have returned time and time again to Sprinter, because of Sprinter's higher value, innovative floorplans, and an array of features and amenities that were previously offered exclusively in high-line products.

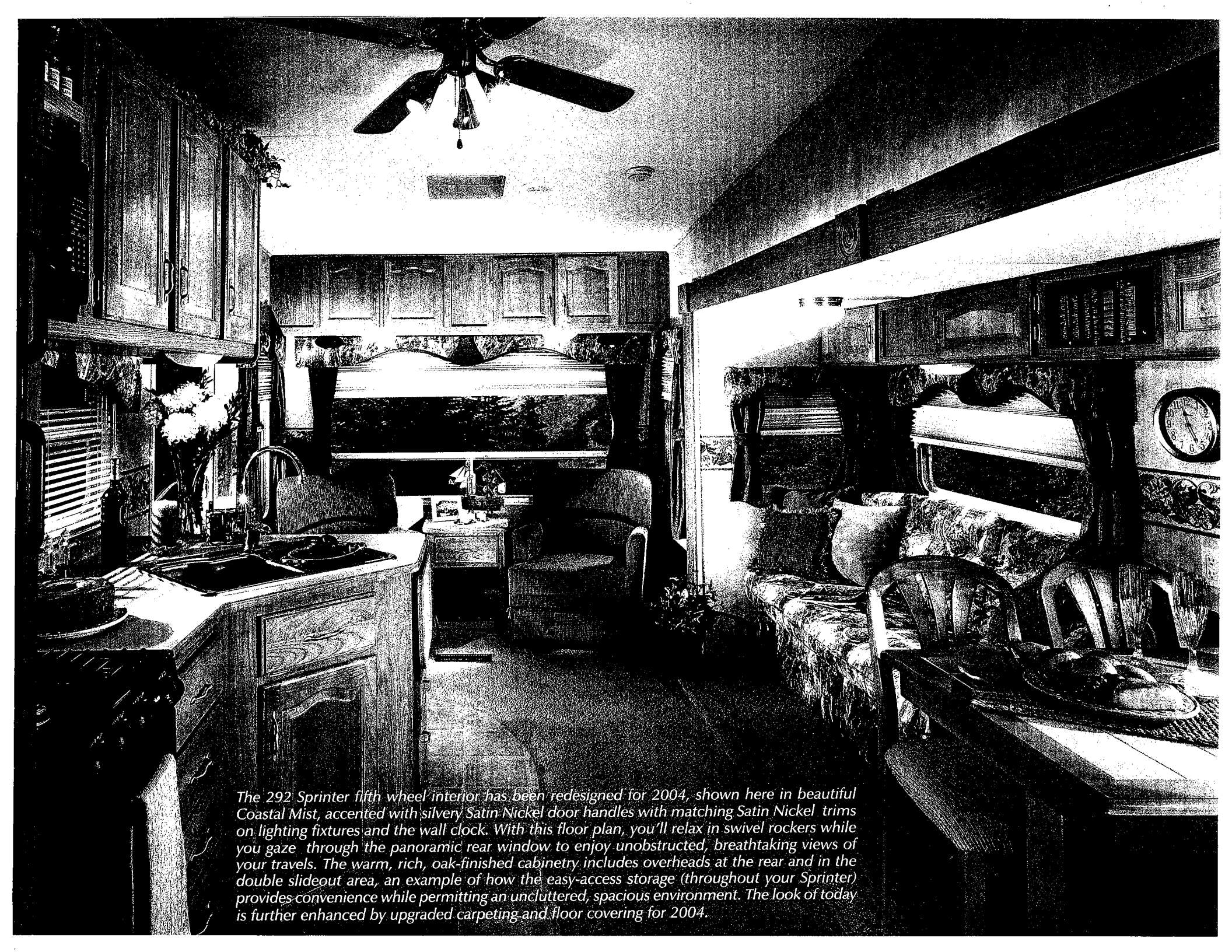
Simply put, Sprinter offers more value for your dollar than any other brand in the recreational vehicle industry. As styles change and technology advances, we work to continuously make Sprinter the most comfortable and convenient RV on the road. We invite you to join the tens of thousands of satisfied Sprinter owners.

See you in the Great Outdoors.

Don Clark  
Group V.P.,  
General Manager



Above, Sprinter's 299 RLS floor plan in the popular Cranberry color scheme shows its comfortable, extra-large slideout room. For 2004, all Sprinter interiors feature "Satin Nickel," silver-colored door handles, hinges, and trim on lighting fixtures and clock. Notice the hardwood raised panel, cathedral-style overhead cabinets, the soft lines of the residential quality upholstery, the designer window treatments, and the attention to detail in the entertainment center cabinetry. Another feature of all Sprinter slideouts—both 12-volt and 110-volt lighting—allows you to camp wherever you want to go, and not be left in the dark.

A black and white photograph showing the interior of a 2004 Ford Sprinter fifth wheel camper. The view is from the front of the vehicle looking towards the rear. On the left is a kitchen area with a countertop, a sink, and a stove. Above the counter are wooden cabinets. In the center, there is a large panoramic window looking out onto a landscape. To the right of the window is a seating area with a sofa and a chair. On the far right, there is a dining table with chairs. The interior is finished with wood paneling and has a cozy, lived-in feel. A ceiling fan is visible at the top of the frame.

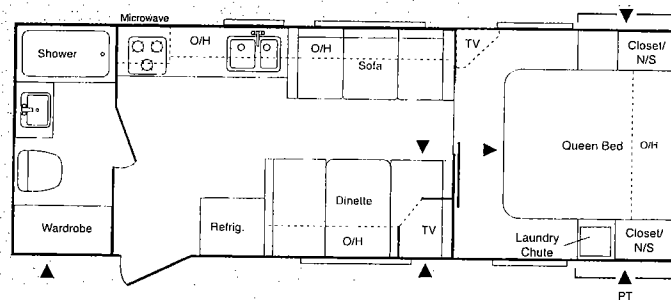
The 292 Sprinter fifth wheel interior has been redesigned for 2004, shown here in beautiful Coastal Mist, accented with silvery Satin Nickel door handles with matching Satin Nickel trims on lighting fixtures and the wall clock. With this floor plan, you'll relax in swivel rockers while you gaze through the panoramic rear window to enjoy unobstructed, breathtaking views of your travels. The warm, rich, oak-finished cabinetry includes overheads at the rear and in the double slideout area, an example of how the easy-access storage (throughout your Sprinter) provides convenience while permitting an uncluttered, spacious environment. The look of today is further enhanced by upgraded carpeting and floor covering for 2004.



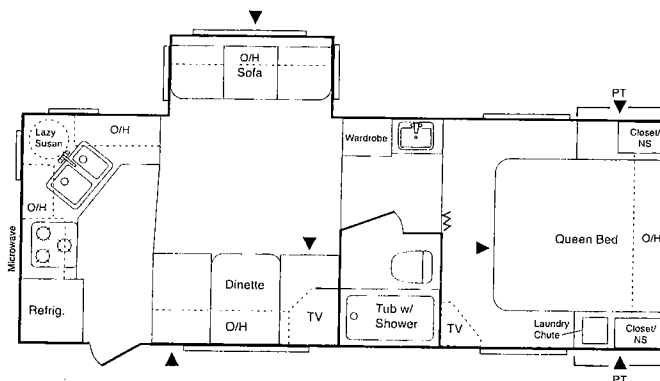
# THE E-Z TOW *SPRINTER*

SMALLER, LIGHTER, WITH ALL THE QUALITY  
OF OUR LARGER MODELS

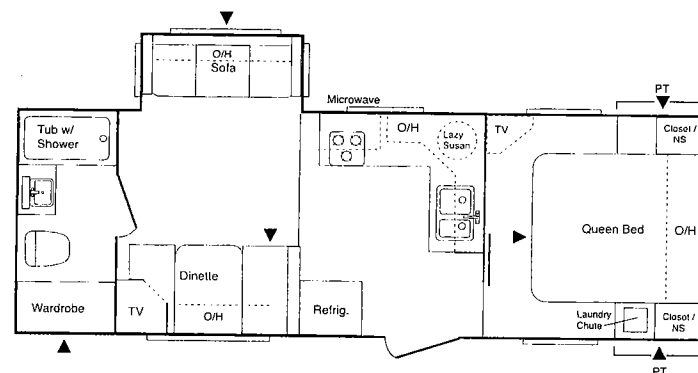
For those who prefer a smaller, lighter unit, we offer the 2004 Sprinter E-Z Tow in lengths under 28 feet. The E-Z tow offers you all the quality, interior styling and convenience of our longer Sprinters, but it is lighter and also includes a sloped front-end profile to improve aerodynamics. The results—great space and style with E-Z towability. The name says it all.



**248 RB**



**249 RKS**



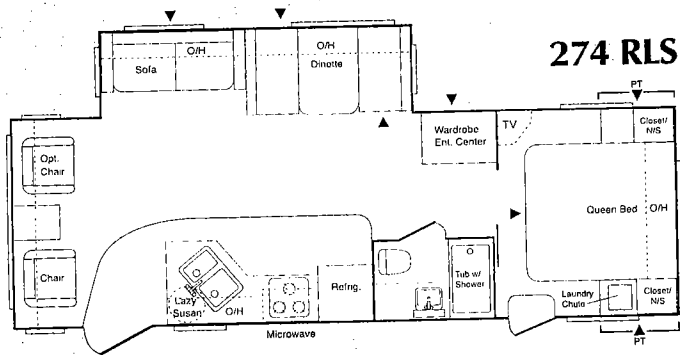
**259 RBS**

E-Z TOW	Gross Dry GVWR	Carrying Weight*	Dry Axle Cap.	Ext. Hitch	Ext. Weight	Ext. Length	Ext. Width	Ext. Height (Top of A/C)	Fresh Water	Waste Water	Grey Water	LPG Cap.	Tire Size
<b>248 RB</b>	7500	4825	2675	500	4440	26' 6"	8'	10' 2"	45 gal	38 gal	61 gal	60	205/75R15
<b>249 RKS</b>	7620	5900	1720	620	5380	26' 6"	8'	10' 10"	45 gal	38 gal	61 gal	60	205/75R15
<b>259 RBS</b>	7640	5650	1990	640	5280	27' 6"	8'	10' 10"	45 gal	38 gal	61 gal	60	205/75R15

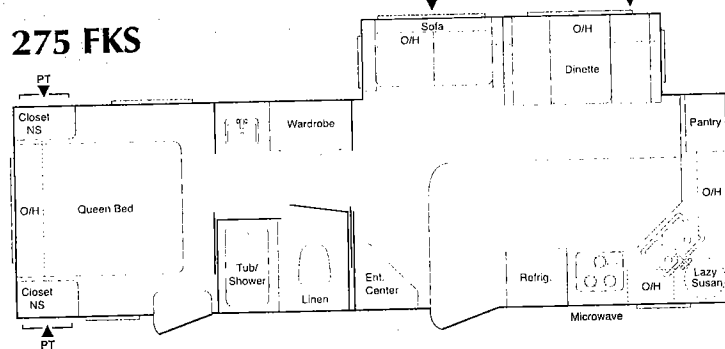
\*Gross Dry Weight does not include options or fluids.

# ***SPRINTER*** by Keystone

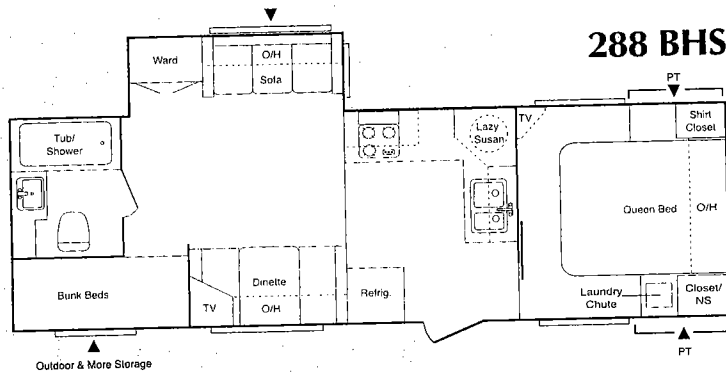
*You don't have to settle...*



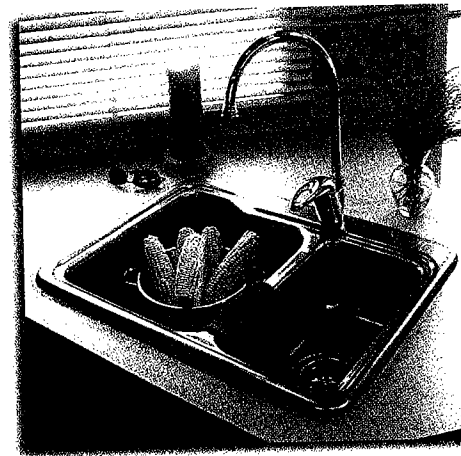
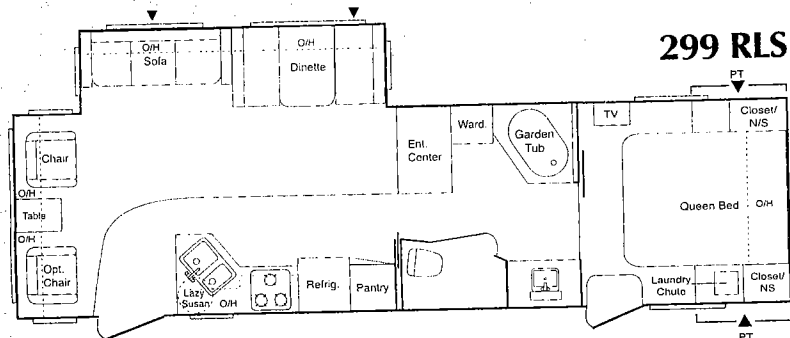
**275 FKS**



**288 BHS**



**299 RLS**



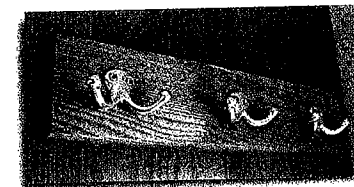
Our residential 60/40 Silver Nickel sink with matching high-spout faucet, so convenient for easy meal preparation and clean-up.



The residential look of Sprinter's stylish camel-back sofa is in keeping with the latest home furnishing trends. Optionally, the sofa is available as a Hide-a-Bed.\*



Lazy Susan maximizes interior cabinet storage and provides easier access to all your supplies. Saves you time, too.



Every Sprinter includes a coat rack conveniently located near the entrance door. Touches like these in every corner of your Sprinter show you that we care about your comfort and convenience.

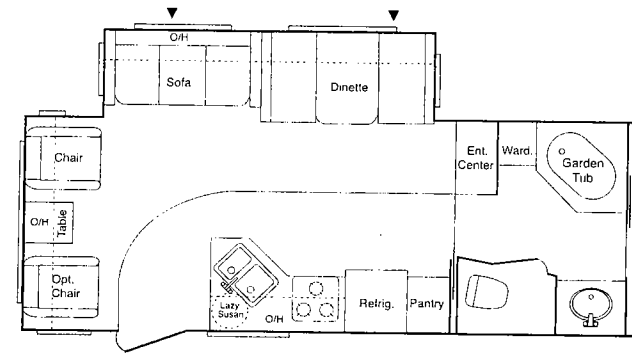
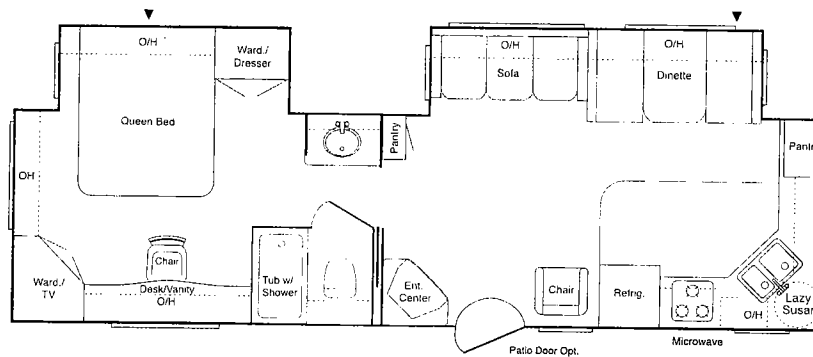
\*Available on most models.



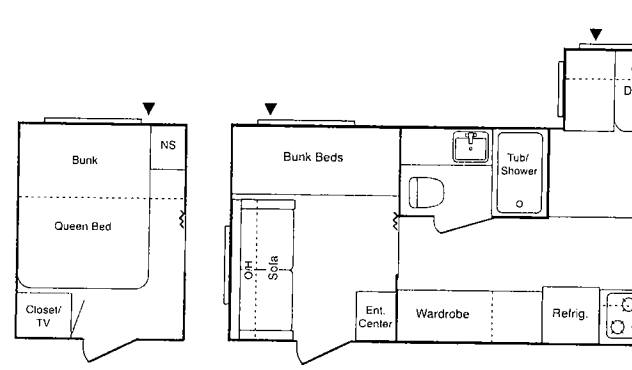
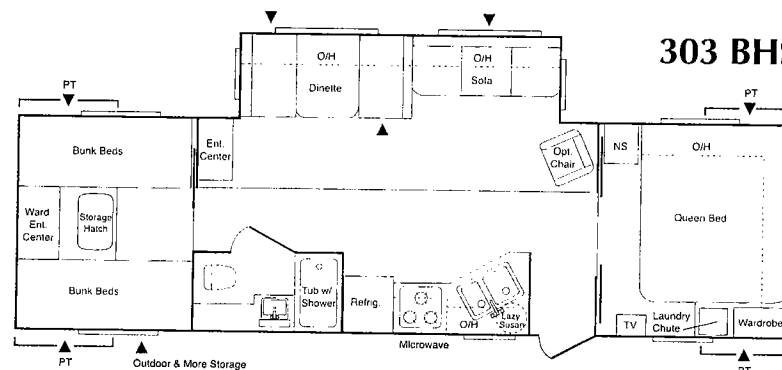
# FEATURES IN EVERY SPRINTER

- All Ceilings Increased to 80"
- Enlarged Overhead Cabinets
- Upgraded Carpeting and Wallboard with Border
- Unique Laundry Chute or Clothes Hamper; Clothes Empty Into Outside Access Storage Area\*
- Satin Nickel Coat Rack at Entry Door
- Residential Kitchen Sink with Deep 60/40 Basins with High-Arch Faucet
- Lazy Susan Maximizes Cabinet Space
- Swing-Out Fifth Wheel Entry Handle
- Exterior Security Lights on All Fifth Wheels
- TV Antenna
- Cable Hook-up, Satellite Prep
- Pass-Through Exterior Storage\*
- Designer Interiors with Hardwood Raised-Cathedral Cabinet Doors and Drawer Fronts
- Tip-out Under sink Silverware Storage
- 45" Dinette in Most Slideouts for Extra Sleeping Room and More Comfortable Dining
- \* E-Z Slide Storage Tray with Booth Dinettes
- Full-Function Monitor Panel in All Kitchens
- Residential-Style Door Latches & Six-Panel Doors
- Large Skylight over Every Shower and Tub
- Deluxe Mastercraft® Residential-Quality Furniture
- Awning
- Ducted Air Conditioning
- Large Microwave
- Mini-Blinds
- Upgraded Innerspring Mattress

300 FKMS

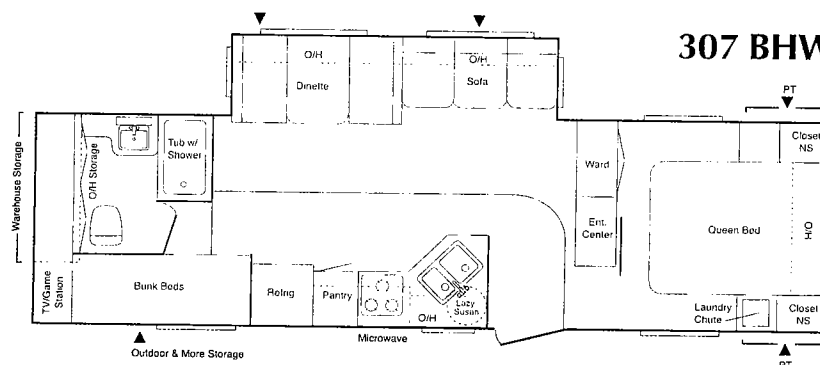


303 BHS

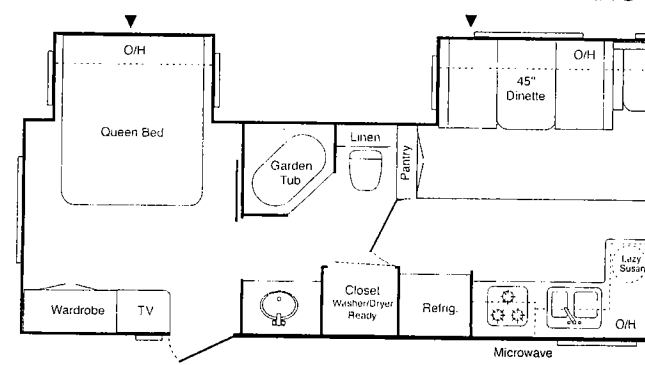


## JOIN THE SPRINTER FAMILY TODAY!

307 BHW



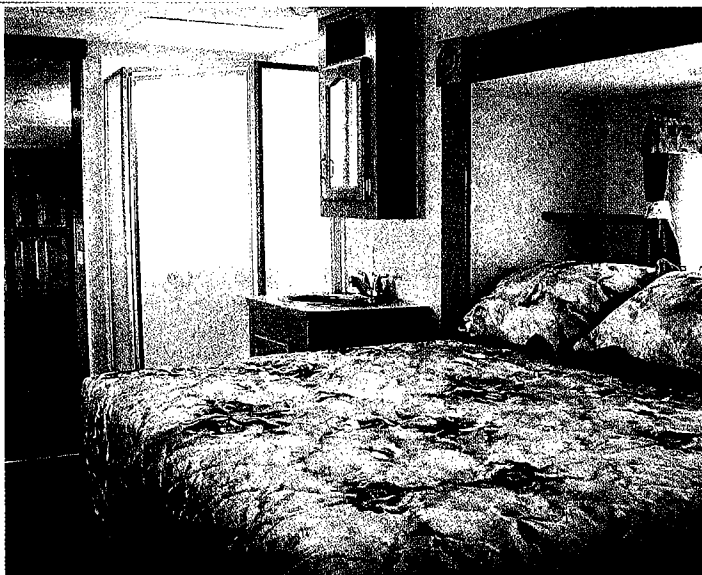
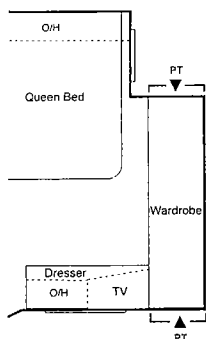
377 BHS



\*Most Floor Plans

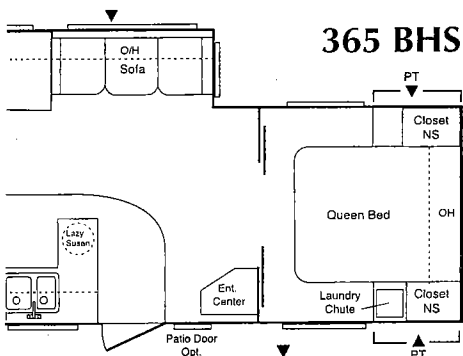
## 320 RLS

**SPRINTER OFFERS  
TRAVEL TRAILERS OR  
HIGH- OR MID-  
PROFILE FIFTH WHEELS  
WITH A VARIETY OF  
CONSTRUCTION  
CHOICES.  
THERE'S A SPRINTER  
FOR EVERY BUDGET,  
EVERY LIFE STYLE.**

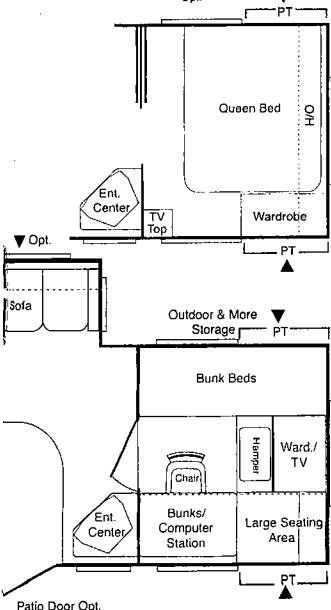
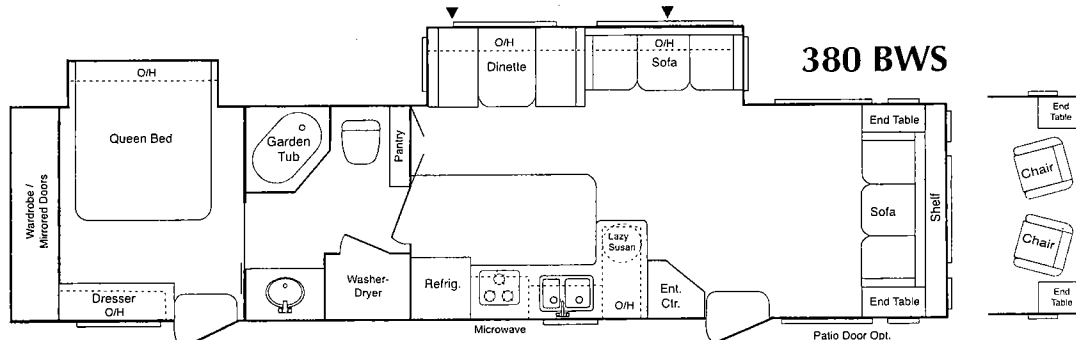


*The Sprinter 293 FWSLS Fifth Wheel features a bedroom slideout with the bathroom on the same level, creating a spacious Master Suite. The Silver Nickel fixtures and sink, the garden shower and the private compartment for the commode all add to the luxury of this double-slideout floor plan. A generously deep closet with mirrored doors and a deep-drawer chest are among the many other features of the Master Suite.*

## 365 BHS



## 380 BWS



TRAVEL TRAILER	GVWR	Gross Dry Weight **	Carrying Cap.	Hitch	Dry Axle Weight	Ext. Length	Ext. Width	Ext. Height (Top of A/C)	Fresh Water	Waste Water	Grey Water	LPG Cap.	Tire Size
<b>274 RLS</b>	9400	6410	2990	600	6220	29' 1"	8'	10' 10"	45 gal	43 gal	38 gal	60	225/75R15
<b>275 FKS</b>	9840	6780	3060	1040	6040	29' 5"	8'	10' 10"	45 gal	43 gal	61 gal	60	225/75R15
<b>288 BHS</b>	9580	6470	3110	780	5980	30' 6"	8'	10' 10"	45 gal	43 gal	56 gal	60	225/75R15
<b>299 RLS</b>	9680	6780	2900	880	6200	32' 11"	8'	10' 10"	45 gal	43 gal	56 gal	60	225/75R15
<b>300 FKMS</b>	11240	7870	3370	1080	7100	32' 11"	8'	11' 1"	45 gal	43 gal	61 gal	40	225/75R15
<b>303 BHS</b>	9620	6830	2790	820	6340	32' 3"	8'	10' 10"	45 gal	43 gal	38 gal	60	225/75R15
<b>307 BHW</b>	9520	7140	2380	720	6720	32' 11"	8'	10' 10"	45 gal	43 gal	38 gal	60	225/75R15
<b>320 RLS</b>	11000	8010	2990	840	7460	34' 11"	8'	11' 1"	45 gal	43 gal	56 gal	60	225/75R15
<b>365 BHS</b>	11140	8205	2935	980	7320	38' 1"	8'	10' 11"	45 gal	43 gal	56 gal	60	225/75R15
<b>377 BHS</b>	11220	8560	2660	1060	7800	38' 7"	8'	10' 11"	45 gal	43 gal	56 gal	60	225/75R15
<b>380 BWS</b>	11400	8170	3230	1240	7300	38' 7"	8'	10' 11"	45 gal	43 gal	56 gal	60	225/75R15

\*\*Gross Dry Weight does not include optional equipment or fluids.



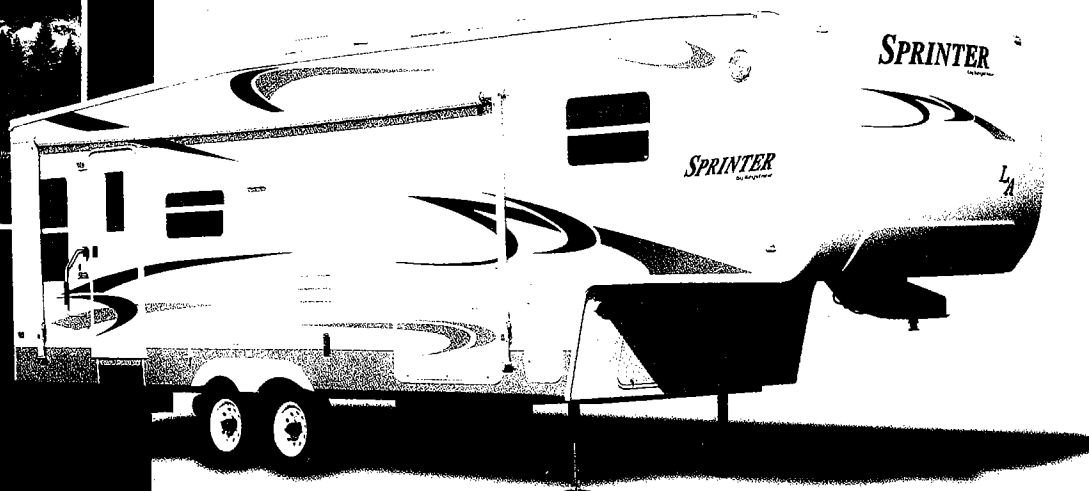
**LA**

## SPRINTER "LA" LAMINATED, ALUMINUM-FRAMED SIDEWALLS

Teamed with Sprinter's stylish, aerodynamic exterior design—strength, light weight, maximum towability, and unprecedented style—all at a price you can afford.

Now standard on all high-profile fifth wheels, and optional on all mid-profile Fifth wheels\*

\* Mid-Profile Sprinters also available with conventional construction.



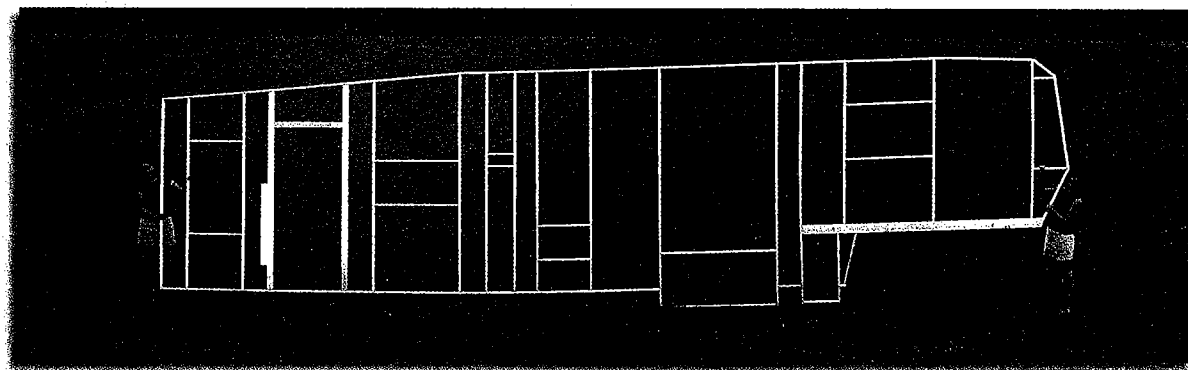
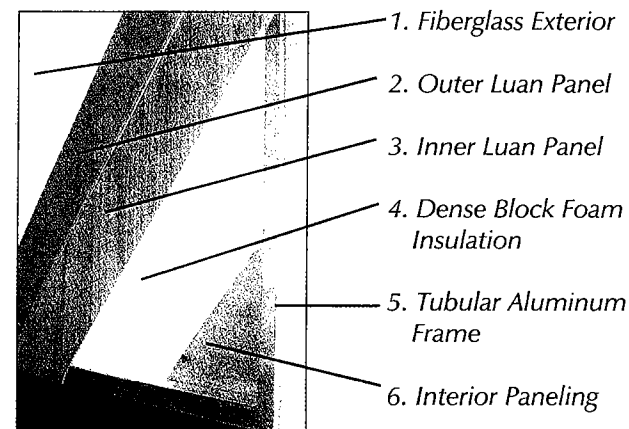
## **LA** DELIVERS ...

Construction previously found only in much higher priced fifth wheels.

Exterior design utilizing the latest technology in wind resistance, engineered for maximum ease of handling.

Advanced Sprinter 6-layer sidewalls for a well-insulated, yet lightweight fifth wheel with uncompromised structural integrity.

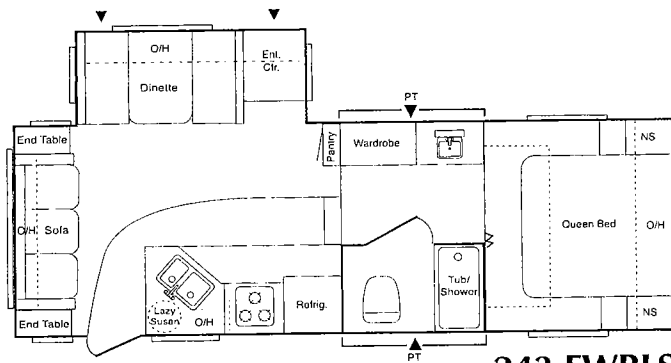
## **LA** DELIVERS ... 6-LAYER LAMINATED CONSTRUCTION



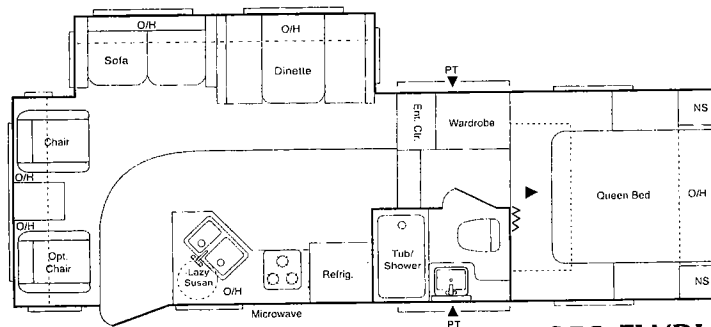
## **LA** DELIVERS ...

Fully welded aluminum sidewalls, light, yet rugged, strong and stable.

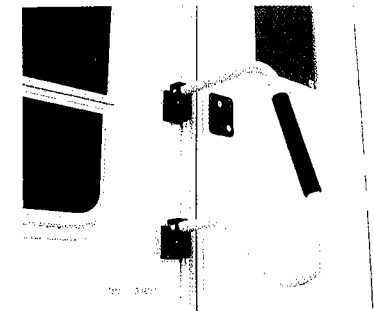




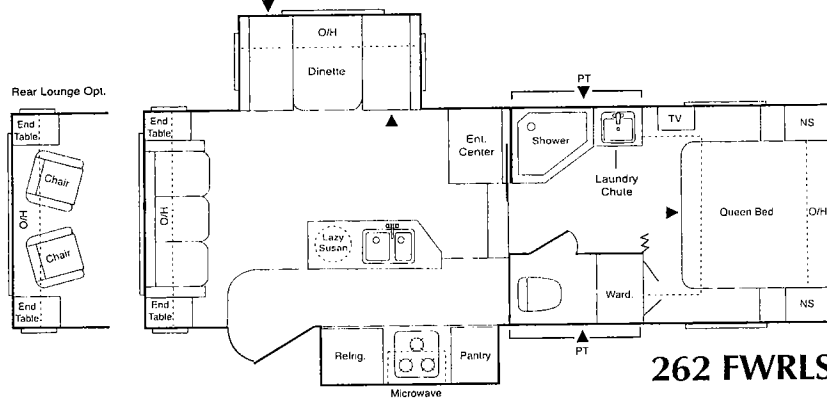
**243 FWRLS**



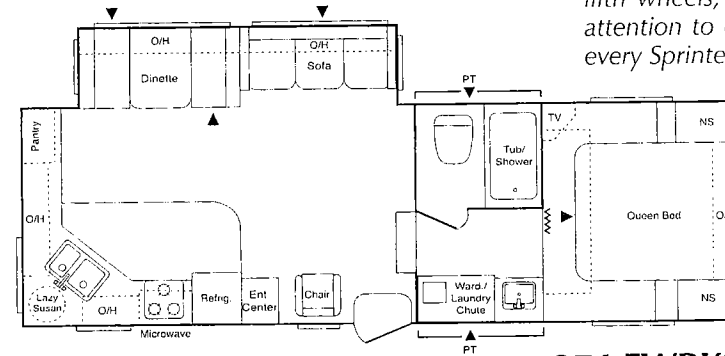
**252 FWRLS**



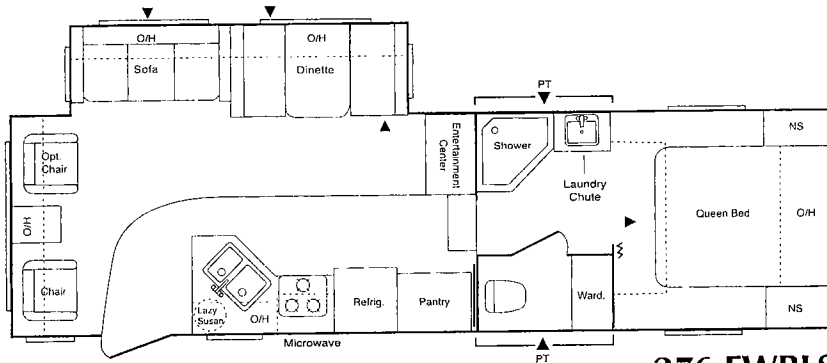
Features like this folding grab handle, available on all Sprinter fifth wheels, show the careful attention to detail you find on every Sprinter, inside and out.



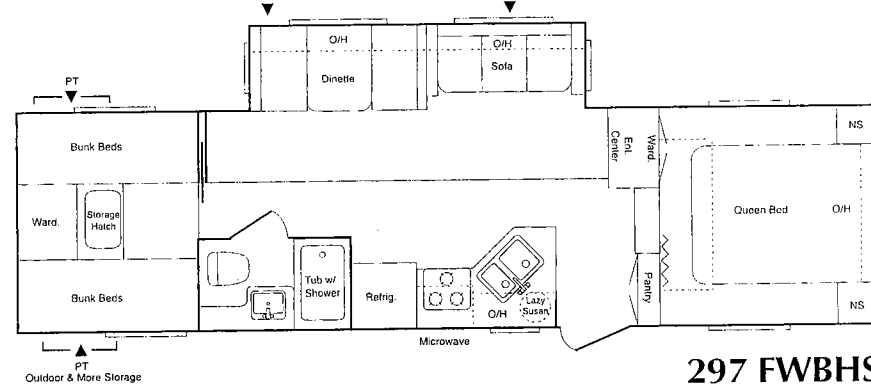
**262 FWRLS**



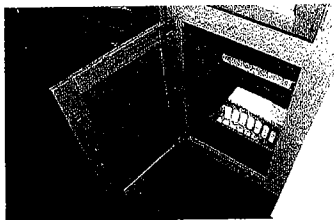
**274 FWRKS**



**276 FWRLS**



**297 FWBHS**

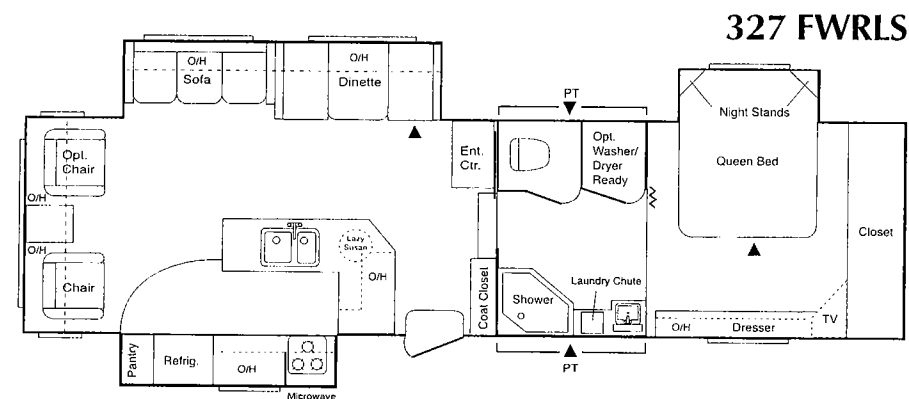
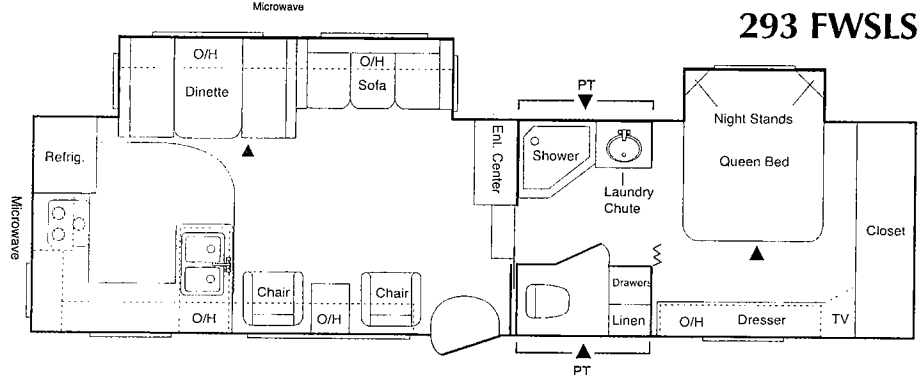
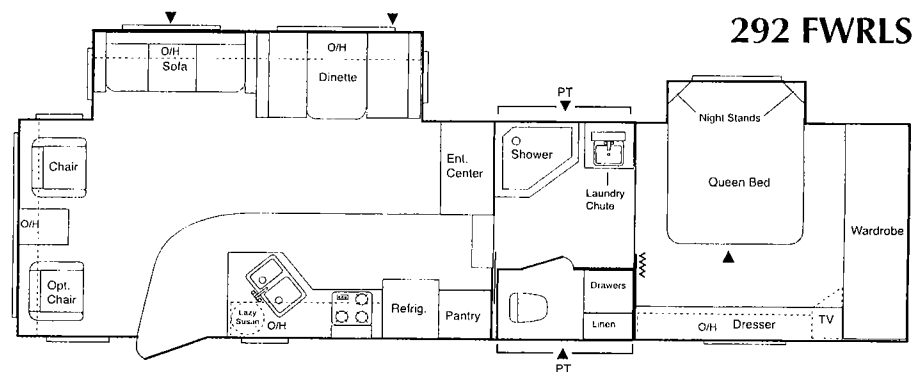
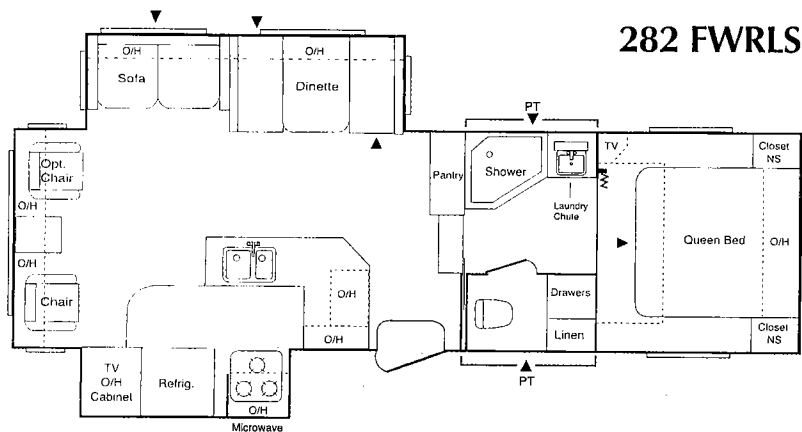


Sprinter's nicely concealed laundry chute sends clothes to the convenient laundry basket below.

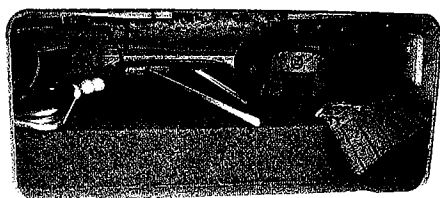
FIFTH WHEEL	GVWR	Gross Dry Weight *	Carrying Cap.	Hitch	Dry Axle Weight	Ext. Length	Ext. Width	Ext. Height (Top of A/C)	Fresh Water	Waste Water	Grey Water	LPG Cap.	Tire Size
<b>243 FWRLS</b>	8180	6330	1850	1180	5420	26' 6"	8'	11' 10"	45 gal	43 gal	38 gal	60	205/75R15
<b>252 FWRLS</b>	8200	6930	1270	1200	5860	26' 5"	8'	11' 10"	45 gal	43 gal	38 gal	60	205/75R15
<b>262 FWRLS</b>	9960	7105	2855	1160	6420	27' 6"	8'	11' 10"	45 gal	43 gal	38 gal	60	225/75R15
<b>274 FWRKS</b>	10150	7305	2845	1350	6105	28' 4"	8'	11' 10"	45 gal	43 gal	56 gal	60	225/75R15
<b>276 FWRLS</b>	10100	7200	2900	1300	6040	29' 7"	8'	11' 10"	45 gal	43 gal	56 gal	60	225/75R15
<b>297 FWBHS</b>	11500	7740	3760	1340	6700	31' 6"	8'	11' 10"	45 gal	43 gal	56 gal	60	225/75R15

\*Gross Dry Weight does not include optional equipment or fluids.

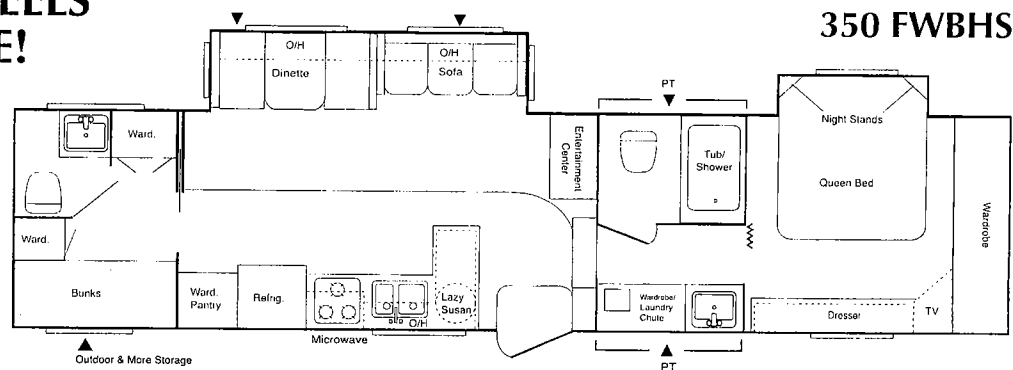
**Fifth Wheels** MID-PROFILE AVAILABLE IN CONVENTIONAL OR **LA**



## SPRINTER HIGH-PROFILE FIFTH WHEELS GIVE YOU MORE STORAGE SPACE!



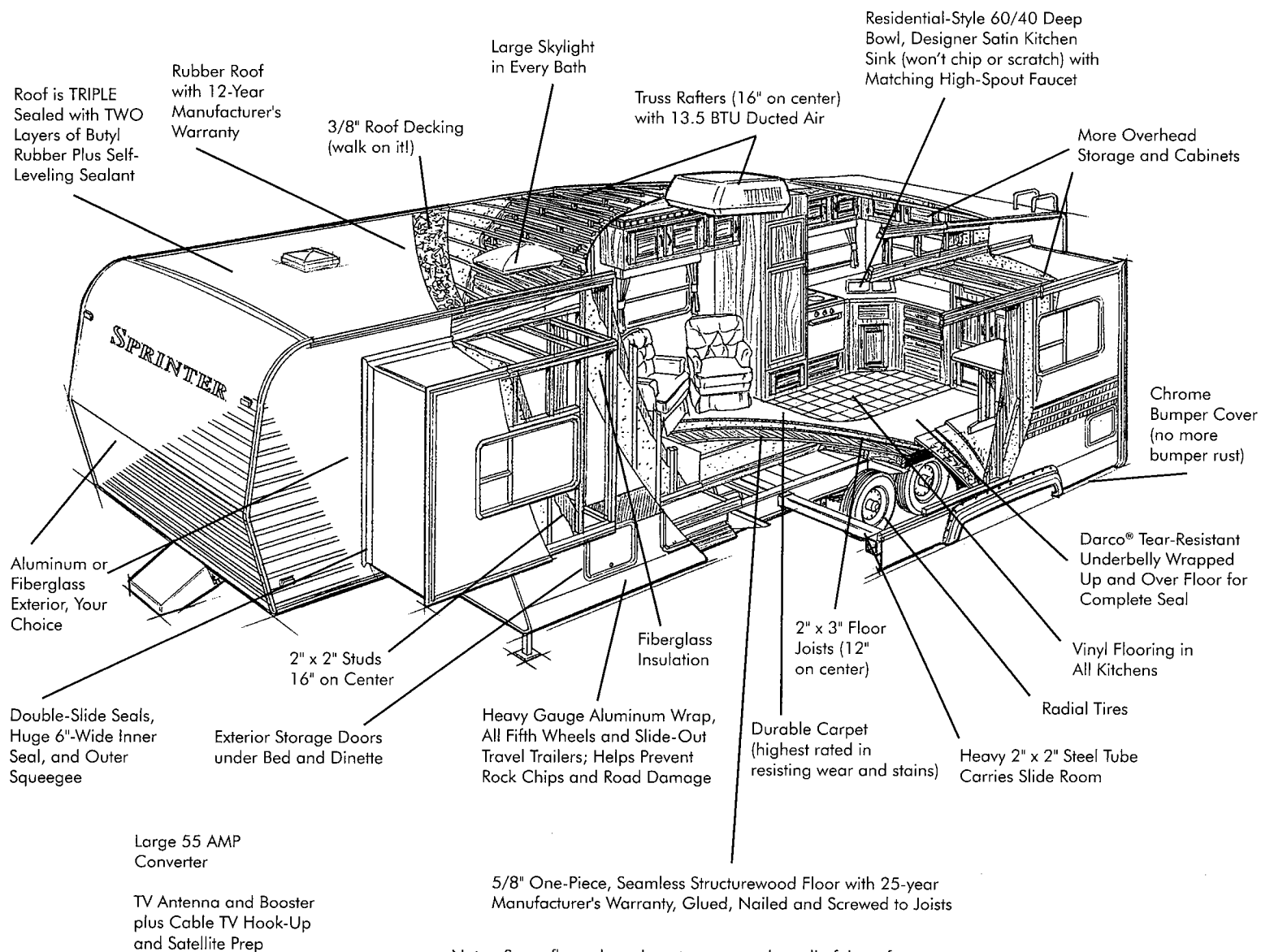
*Sprinter high-profile fifth wheels give you plenty of storage space. An amazing 55 cu.ft. of easy-access, pass-through storage lets you take along all your favorite sporting equipment.*



FIFTH WHEEL	GVWR	Gross Dry Weight*	Carrying Cap.	Hitch	Dry Axle Weight	Ext. Length	Ext. Width	Ext. Height (Top of A/C)	Fresh Water	Waste Water	Grey Water	LPG Cap.	Tire Size
<b>282 FWRLS</b>	11640	8310	3330	1480	6960	29' 6"	8'	11' 10"	45 gal	43 gal	56 gal	60	225/75R15
<b>292 FWRLS</b>	11900	9100	2800	1740	7660	31' 11"	8'	11' 10"	45 gal	43 gal	56 gal	60	225/75R15
<b>293 FWSLS</b>	12360	9520	2840	2200	7620	32' 0"	8'	11' 10"	45 gal	43 gal	56 gal	60	225/75R15
<b>327 FWRLS</b>	14280	9810	4470	2280	8060	34' 3"	8'	11' 10"	45 gal	43 gal	56 gal	60	235/85R16
<b>350 FWBHS</b>	12540	9460	3080	2380	7320	36' 9"	8'	11' 10"	45 gal	86 gal	61 gal	60	225/75R15

\*Gross Dry Weight does not include optional equipment or fluids.

## "QUALITY CONSTRUCTION GETS UNDER OUR SKIN"



Note - Some floor plans do not accommodate all of these features  
High-Profile Fifth Wheels Feature LA Construction (Laminated, Aluminum-Framed Sidewalls)

## INNER FEATURES

### TRAVEL TRAILERS AND FIFTH WHEELS



Sprinter's conventional Travel Trailers and Fifth Wheels utilize Alumi-Guard™, our exclusive building technique. Alumi-

Guard™ places aluminum in the critical areas of construction—around doors and exterior storage compartments, providing the protection that only aluminum can offer. Alumi-Guard™ extends the life of your Sprinter by protecting these areas from the damaging effects of moisture. Alumi-Guard™ is offered on all Sprinter products at the same price point our competition offers for wood alone!



Look for the Space Maker™ Seal on every Sprinter product. It is your assurance that your Sprinter is equipped with our exclusive under-floor fresh water storage system. Saves space, resists freezing, enhances towability, and provides extra fresh-water capacity.

## OPTIONS

- FIBERGLASS EXTERIOR
- STABILIZER JACKS
- OUTSIDE SHOWER
- 10-GAL. HOT WATER HEATER • PATIO DOOR
- FREE-STANDING TABLE WITH FOUR CHAIRS
- WASHER/DRYER HOOK-UP
- EXTRA LARGE REFRIGERATOR
- HIDE-A-BED SOFAS
- 15,000 BTU AIR CONDITIONER
- SOLID WOOD REFRIGERATOR FRONT
- SPARE TIRE AND CARRIER
- RESIDENTIAL REFRIGERATOR



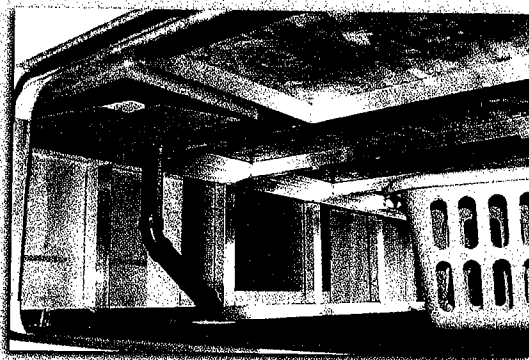
Sprinter bunk models offer you unprecedented ease of access and storage capacities. Look how our Outdoor & More™ storage,\* shown here, has ample room for both parent's and kid's bikes. Or, take along a tent, barbecue grill or other oversize equipment. Outdoor & More offers 60 cu.ft. of space.

\*available on most bunk models

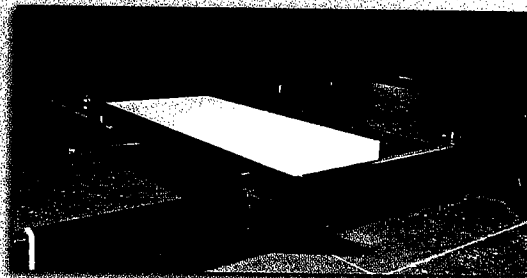
## CONSTRUCTION

BUILT WITH INTEGRITY... from the inside out

- Cambered steel frame with extra supporting outriggers under every Sprinter RV.
- One-piece, seamless, 5/8" floor deck with a 25-yr. mfr.'s warranty.
- Rubber roof (12-yr. mfr.'s warranty) rolled over side and rear walls to eliminate seams and prevent potential leaks.



Welded aluminum supports in all raised-bath fifth wheel decks provide strength and rigidity in all critical high-stress areas.



With Space-Maker™ useable storage space is greatly expanded by removing the fresh water tank from the interior of the unit. The Space-Maker's location also lowers the center of gravity, improving towability. The heated compartment gives you added protection when cold-climate camping.

- Fully-decked roof on trussed rafters, a full 5" thick, providing an R-11 insulation rating.
- Easy-opening entry steps with extra-low first step.
- Taller, wider entry door, radius corners.
- Outside storage doors.

## SPRINTER VALUE

Sprinter value happens because we focus on the manufacturing process. We put the dollars that many companies spend on large advertising campaigns, executive benefits, and costly office complexes into improving our products. We also strive to increase our manufacturing efficiencies while maintaining high quality. We achieve this high level of quality by employing a workforce from a community which still values craftsmanship. Finally, we listen to our Sprinter customers across the country. We learned a long time ago that great ideas come from the people who use our products daily. We appreciate and value this input and have implemented many of these ideas into our products.

The result of these efforts has been dramatic. Sprinter recreational vehicles are now seen everywhere—on the Interstates, on the Trans-Canadian Highway, from the Rockies to the Everglades, in just about any camping resort or national park you enter in the U.S. or Canada. We welcome you to join the Sprinter family of travel trailers and fifth wheels, where quality, comfort, and function meet.



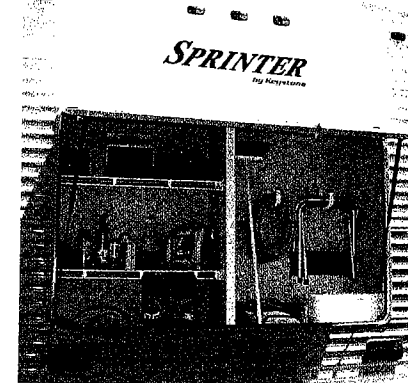
**Keystone RV  
Company**

17400 Hackberry Drive Goshen, Indiana 46526  
(574) 535-2100 [www.keystone-sprinter.com](http://www.keystone-sprinter.com)

Your Sprinter Dealer:



"Warehouse storage," a new feature for 2004, is available in the 307 BHW. If you're looking for convenience and easy access to tools and toys, this is your floor plan.



Product information and photography are as accurate as possible at the time of publication. Colors and finishes are photographic representations and may appear differently when viewing actual materials. Some features shown are optional. Features, floorplans, and specifications are subject to change without notice.