

FLEETWOOD.RV

Face Arrow[®]
Vision
BY **FLEETWOOD.RV**

1 9 9 9

W

HEN YOU DESERVE THE BEST.

At Fleetwood RV, we've been making America's favorite recreational vehicles for nearly 50 years. We've done it by building honest value, rugged dependability and peace of mind into every one of them. A unique expression of this state of the art philosophy is the 1999 Pace Arrow Vision.

Everything about Pace Arrow Vision says elegance and sophistication. From the luxurious interiors to the dramatically stylish exteriors, each detail is crafted for your ultimate comfort and convenience. Nothing has been overlooked. In the master suite you'll find a cedar-lined wardrobe. In the gourmet galley, Corian® countertops. In the driver's cockpit, a sleek wraparound instrument panel. The living room features flat woven jacquard and tapestries that reflect the residential ambience. Oak plank hardwood floors, plush carpeting, beveled mirrors and brass fixtures add to the irresistible appeal of Pace Arrow Vision. The equally appealing EZ Glide™ Room Slide-out System on select models effortlessly makes the coach even roomier. And our new EZ Store™ Storage System moves with the slide-out room, giving you easy storage access even when the room is extended. The lasting impression is one of refinement and prestige. That's why Pace Arrow Vision deserves its legendary reputation as an enduring classic that just keeps getting better.

1999 PACE ARROW VISION SPECIFICATIONS

Chevrolet Chassis	33L	34C	34N	35W	36B	36Z
Engine CID	454	454	N/A	N/A	454	454
Wheel Base	208"	178"	N/A	N/A	190"	228"
GVWR lbs ¹	16,500	20,000	N/A	N/A	20,000	22,500
GAWR (front) lbs ²	5,500	5,500	N/A	N/A	5,500	8,000
GAWR (rear) lbs ² (incl. tag)	11,000	14,500	N/A	N/A	14,500	14,500
GCWR lbs ³	20,000	21,000	N/A	N/A	21,000	26,000
Hitch Rating/Tongue wt. lbs	3,500/250	3,500/250	N/A	N/A	3,500/250	5,000/500
Fuel Capacity (gallons/lbs)	75/450	75/450	N/A	N/A	75/450	75/450

Ford Chassis	33L	34C	34N	35W	36B	36Z
Engine CID	415	415	415	415	415	N/A
Wheel Base	208"	208"	208"	228"	228"	N/A
GVWR lbs ¹	20,500	20,500	20,500	20,500	20,500	N/A
GAWR (front) lbs ²	7,000	7,000	7,000	7,000	7,000	N/A
GAWR (rear) lbs ² (incl. tag)	13,500	13,500	13,500	13,500	13,500	N/A
GCWR lbs ³	25,500	25,500	25,000	25,500	25,500	N/A
Hitch Rating/Tongue wt. lbs	5,000/500	5,000/500	5,000/500	5,000/500	5,000/500	N/A
Fuel Capacity (gallons/lbs)	75/450	75/450	75/450	75/450	75/450	N/A

Dimensions	33L	34C	34N	35W	36B	36Z
Length	33' 6"	34' 5"	34' 8"	35' 2"	36' 6"	36' 10"
Height (w/roof A/C)	11' 11"	11' 11"	11' 11"	11' 11"	11' 11"	12' 4"
Width	102"	102"	102"	102"	102"	102"
Interior Height	79"	79"	79"	79"	79"	79"
Interior Width	96"	96"	96"	96"	96"	96"

Liquid Capacities (gallons)	33L	34C	34N	35W	36B	36Z
Fresh Water	80	60	80	80	70	70
Grey Water Holding	58	58	58	58	58	58
Black Water Holding	42	42	42	42	42	42
Appliance LPG Tank*	25	25	25	25	25	25

¹ GVWR (Gross Vehicle Weight Rating): Maximum permissible weight of this motor home. The GVWR is equal to or greater than the sum of the unloaded vehicle weight plus the net carrying capacity.

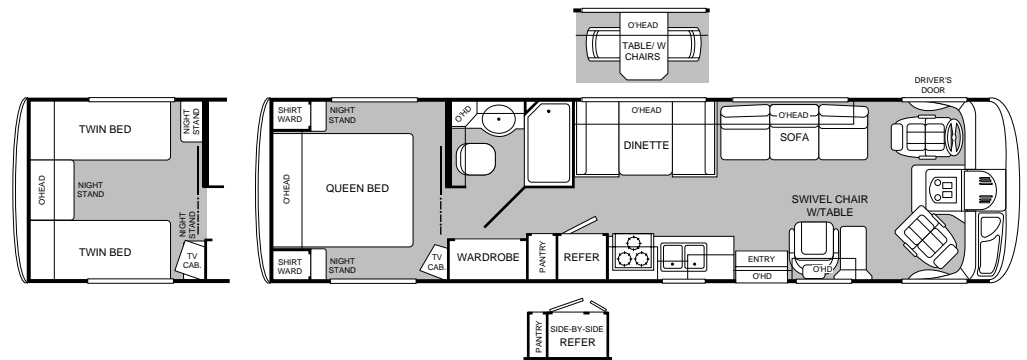
² GAWR (Gross Axle Weight Rating): Maximum permissible loaded weight a specific axle is designed to carry.

³ GCWR (Gross Combination Weight Rating): Value specified by the motor home manufacturer as the maximum allowable loaded weight of this motor home with its towed trailer or towed vehicle.

*Tank manufacturer's listed water capacity (WC) actual filled. LP capacity is 80% of listing due to safety shut off required on tank.

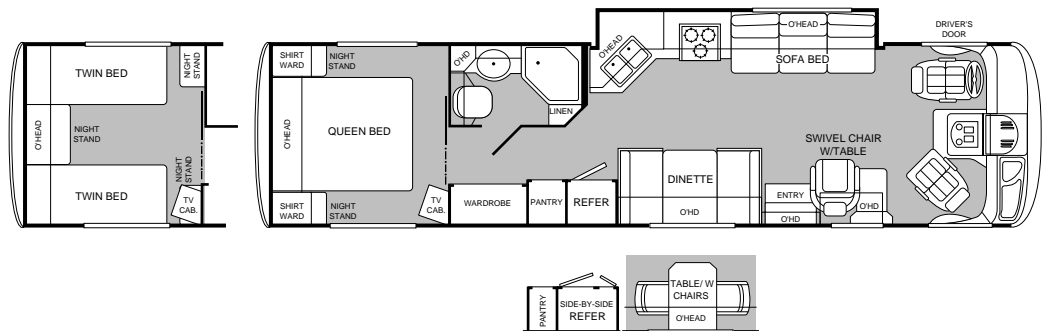
MODEL
33L

- Queen bed or opt'l twin beds
- Fully enclosed bathroom
- Swivel chair w/table
- Dinette or opt'l table w/chairs
- Opt'l side-by-side refrigerator



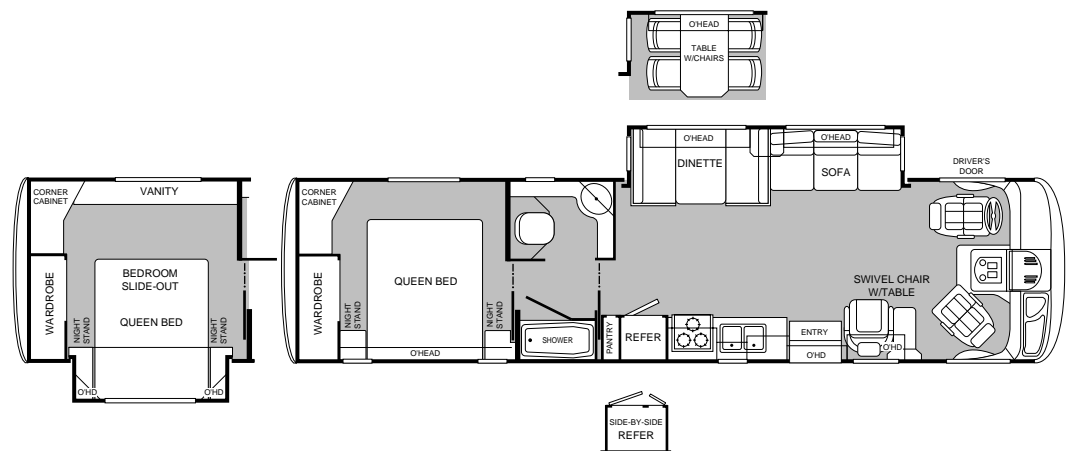
MODEL
34C

- Living room/galley slide-out
- Queen bed or opt'l twin beds
- Fully enclosed bathroom
- Dinette or opt'l table w/chairs
- Opt'l side-by-side refrigerator



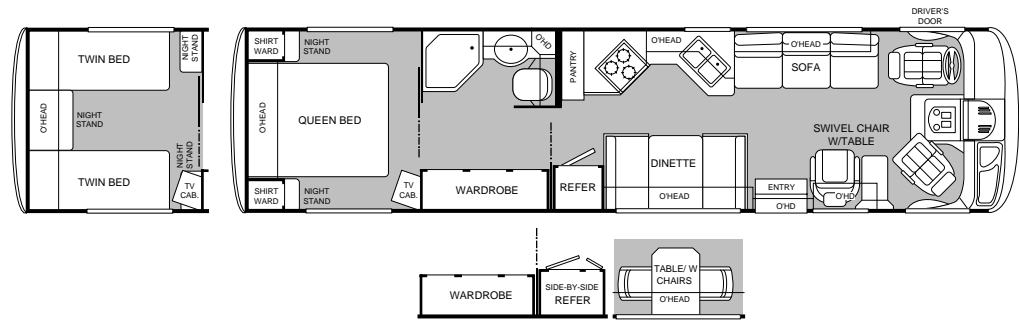
MODEL
34N

- Opt'l bedroom slide-out
- Living room slide-out
- Dinette or opt'l table w/chairs
- Swivel chair w/table
- Separate lavy and shower



MODEL
35W

- Queen bed or opt'l twin beds
- Extra large wardrobe
- U-shaped kitchen
- Dinette or opt'l table w/chairs
- Swivel chair w/table



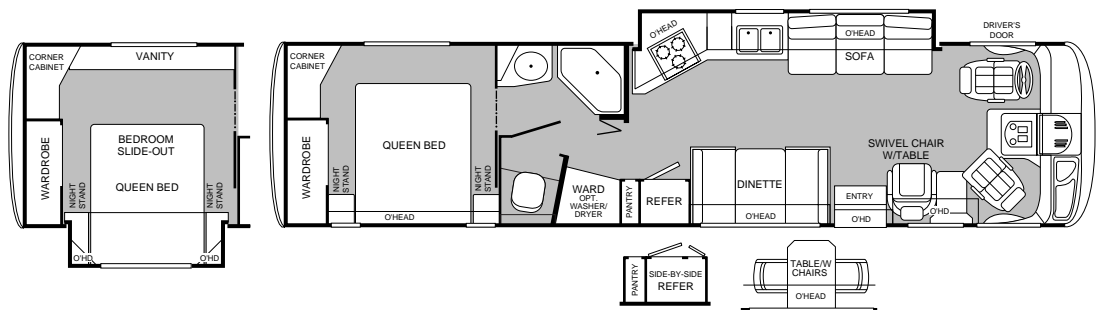
MODEL
36B

- Living room slide-out
- Opt'l bedroom slide-out
- Split bathroom
- Opt'l side-by-side refrigerator
- Opt'l washer/dryer



MODEL
36Z

- Living room/galley slide-out
- Opt'l bedroom slide-out
- Swivel chair w/table
- Private toilet
- Opt'l side-by-side refrigerator



1999 PACE ARROW VISION FEATURES AND AVAILABLE EQUIPMENT

Exterior Automotive and Electrical, *Standard Equipment*

Aerodynamic Bus Styling	Full Fiberglass Front-end Cap	Full Fiberglass Rear Cap
One-piece Swingdown Engine Access Door	Slider Windows	Front Grille
Oversized Aerodynamic Windshield	Fiberglass Front Quarter Panels	Fog Lamps
Radius Entry Door w/Deadbolt Latch	Halogen Headlights	Mud Flaps
Fiberglass Rear Wheel Trim	Undercoating	Steel Surfaced Firewall
Windshield Wipers w/Wet Arm	Docking Lights	Third Brake Light
Tire Valve Extenders	Underhood Utility Light	Rear Vision Camera
Trailer Hitch w/Electrical Hook-up (4-point)	Stainless Steel Wheel Simulators	

Exterior Automotive and Electrical, *Options*

	33L	34C	34N	35W	36B	36Z
Hydraulic Levelers, 4-point Manual	Opt	Std	Std	Opt	Std	Std

Interior Automotive, *Standard Equipment*

Driver Door w/Pwr. Window (not avail. w/36Z)	Multi Function Sun Visors	Dash Fans
Reclining Captains Chairs	3-point Front Seat Belts	Auto A/C/Heater Combo
Radio w/Cassette/MX Electronic Tuner	Radio Switch-Main/Aux.	Cruise Control
Low Profile Engine Cover w/Convenience Tray	Battery Disconnect	Intermittent Wiper Control
Soft Surface Automotive Dash	Auxiliary Start Circuit	Tilt Steering Wheel
Computer Workstation in Dash	Driver/Passenger Window Sun Shades	

Electrical, *Standard Equipment*

Dual 6v/Deep Cycle 217-amp House Battery	ECC Climate Control	Patio Receptacle (GFI)
120v/12v Wire Raceway	Wall-Mounted Switches	30-amp Service
Water Pump Switching	5.5kw Generator	VCR Ready
120v/12v AC/DC Convert. Central Elect. Panel w/Charger		

Electrical, *Option*

	33L	34C	34N	35W	36B	36Z
7.0kw Generator	Opt	Opt	Opt	Opt	Opt	Opt

Interior, *Standard Equipment*

Woven Jacquard Feature Fabrics	2 Interior Decor Options	Window Coverings
Corian® Galley Countertops	Oak Cabinet Doors & Drawers	Wainscot Paneling
Large Double Stainless Steel Sink	Sink Cutting Board	Trash Basket in Galley
Wall-to-wall Nylon Carpet w/Pad	Solid Divider Doors	Plank Flooring in Galley
Vinyl Floor Covering & Table	Solid Wood Drawers	Raised Panel Cabinet Doors
Wood Trim Table & Countertops	Slide-out Dinette Bins w/Locks	Miniblinds (metal)
Adjustable Cabinet Shelves	Radius Corner Cabinetry	Headboard
Slide-out Pantry w/Transit Lock	Reclining Bucket Seats	Crown Molding
Bedspread w/Decor Pillows	Beveled Mirrors	Innerspring Mattress
Flat Panel Cabinet Doors	Bright Brass Bath Accessories	Tub/Shower Skylight
Molded Tub/Shower	Cedar Lining in Wardrobe	Bath Door/Trims
Residential Seat Styling	Roller Guide Drawer Slides w/Transit Ship Locks	

Interior, *Options*

	33L	34C	34N	35W	36B	36Z
Stereo AM/FM w/CD Changer	Opt	Opt	Opt	Opt	Opt	Opt
Rear Television w/Remote	Opt	Opt	Opt	Opt	Opt	Opt
VCR	Opt	Opt	Opt	Opt	Opt	Opt
Leather Swivel Recliner	Opt	Opt	Opt	Opt	Opt	Opt
Lounge Recliner	Opt	Opt	Opt	Opt	Opt	Opt
Freestanding Dinette & Chairs	N/A	N/A	Opt	N/A	Opt	N/A
Twin Beds/Nightstands	Opt	Opt	N/A	Opt	N/A	N/A
Dinette Table w/Ext. Freestanding	Opt	Opt	N/A	Opt	N/A	Opt
Power Driver Seat	Opt	Opt	Opt	Opt	Opt	Opt
Leather Seats (drv./pass.)	Opt	Opt	Opt	Opt	Opt	Opt
Glass Shower Door w/Bright Brass Frame	N/A	Std	Std	Std	N/A	Std
Folding Shower Door	Std	N/A	N/A	N/A	Std	N/A

1999 PACE ARROW VISION FEATURES AND AVAILABLE EQUIPMENT

Interior Lighting, *Standard Equipment*

Wardrobe Lighting	Chandelier	Decor Lighting
Fluorescent Ceiling Light w/Dual Bulb	Wall Sconces	Incandescent Lighting

Exterior, *Standard Equipment*

Continuous One-piece Bulb Seal	Utility Compartment	Steel Seal Frames
Park Cable Receptacle	Exterior Assist Handle	Roof Ladder
Hidden Stainless Steel Latch Rods	Exterior Shower	Power Entry Step
Remote/Ext. Heated Rearview Mirror	Lights in Compartments	Porch Light
Awning Rail/Drip Molding (both sides)	Insulated Luggage Doors	Lower Body Accent Paint
House Batteries on Slide-out Tray	Single Paddle/Metal Latches	Gas Lift Strut Supports
2 Colorway Graphics to Match Decor	Pass-through Storage	Dual Glazed Windows

Exterior, *Options*

	33L	34C	34N	35W	36B	36Z
Awning	Opt	Opt	Opt	Opt	Opt	Opt
Satellite Dish	Opt	Opt	Opt	Opt	Opt	Opt
Security System	Opt	Opt	Opt	Opt	Opt	Opt

Platform Construction & Body Structure, *Standard Equipment*

Basement Floor Configuration	Vacubond Lower Floor	Steel Outriggers
Vacubond Walls w/Smooth Ext. Fiberglass	Vacubond Upper Floor	Paco Beams
Aluminum Wall/Ceiling Framing	Box Vibration Isolators	Rubber Roof
Radius Roof Ducted for Air Conditioning	Heated Water & Holding Tank Compartments	
Polyethylene Luggage Compartment Boxes	Interlocking Aluminum Extrusions	

Slide-out, *Options*

	33L	34C	34N	35W	36B	36Z
Galley	N/A	Std	N/A	N/A	N/A	Std
Living Room Slide-out	N/A	N/A	Std	N/A	Std	N/A
Bedroom	N/A	N/A	Opt	N/A	Opt	Opt

Safety Equipment, *Standard Equipment*

Smoke Detector	LPG Detector	Carbon Monoxide Detector
Fire Extinguisher	Emergency Exit Window	

Appliances, *Standard Equipment*

8-cu. ft. Refrigerator (lg. dbl. doors)	Folding Range Cover	Prewired for Satellite Dish
Light/Power Range Hood & Monitor Panel	Fantastic® Power Roof Vent	Phone Jack
22" 3-burner, High-output Cooktop w/Oven	Rear Speakers in Bedroom	Front 20" TV w/Lift
Single Lever Galley Faucet	Dual Roof A/C w/Solar Panel	Water Heater Bypass
Demand Water Pump w/Filter	Water Filter w/Faucet	Marine Toilet
Power Bath Vent	6-gallon Quick Recovery Water Heater w/D.S.I.	

Appliance, *Options*

	33L	34C	34N	35W	36B	36Z
Wall Clock (battery operated)	Std	Std	Std	Std	N/A	Std
Furnace 20m BTU/34m BTU (dual)	N/A	N/A	N/A	Std	Std	Std
Furnace 20m BTU/20m BTU (dual)	N/A	N/A	Std	N/A	N/A	N/A
Furnace 34m BTU	Std	Std	N/A	N/A	N/A	N/A
Convection Microwave	Opt	Std	Opt	Opt	Opt	Std
Side-by-side Refrigerator w/Ice Maker	Opt	Opt	Opt	Opt	Opt	Opt
Double Door Refrigerator w/Ice Maker	Opt	Opt	Opt	Opt	Opt	Opt
Microwave	Std	N/A	Std	Std	Std	N/A

Sleeping Accommodations, *Std. Equipment*

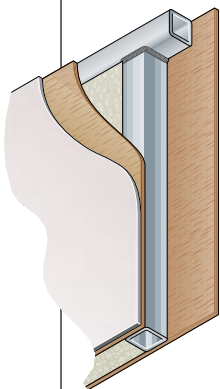
	33L	34C	34N	35W	36B	36Z
Easy Bed Sofa	46" x 70"	46" x 66"	N/A	46" x 70"	46" x 70"	46" x 70"
Dinette	44" x 74"	39" x 74"	39" x 74"	39" x 74"	39" x 74"	39" x 74"
Queen Bed	60" x 75"	60" x 75"	60" x 75"	60" x 75"	60" x 80"	60" x 80"

Sleeping Accommodations, *Options*

	33L	34C	34N	35W	36B	36Z
Twin Beds w/Nightstand	39" x 80"	39" x 80"	N/A	39" x 80"	N/A	N/A
Bedroom Slide-out	N/A	N/A	Opt	N/A	60" x 80"	60" x 80"
Sofa Sleeper	N/A	N/A	Std	N/A	Opt	N/A

WHEN THE DUST SETTLES, THERE'S NOT AN RV IN THE WORLD THAT'S TESTED LIKE A FLEETWOOD RV.

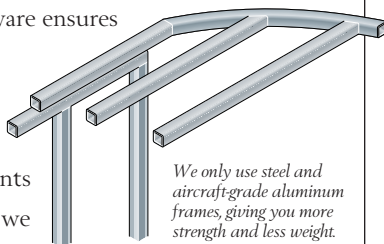
If anyone loves to tear an RV apart, it's us. Because at Fleetwood RV nothing's more important than your safety and comfort. While our improvements aren't all visible to the eye, we commit millions of dollars a year in product development and research to build what we believe are the finest RVs in the world.



Vacubond construction ensures that every roof, wall and floor is completely sealed.

It all starts with advanced computer analysis of new prototype designs. Once built, the prototypes undergo rigorous load bearing and weight distribution stress tests. Stringent load analysis software ensures improved reliability.

Then the relentless testing and re-testing of components begins. In a couple of weeks we can simulate years of real world



We only use steel and aircraft-grade aluminum frames, giving you more strength and less weight.

use. Slide-out mechanisms have to open and shut thousands of times without a complaint. Seat belts must withstand more than three-ton stress levels without a whimper. And doors have to endure tens of thousands of slammings without losing their composure.

At the end of the day, we've thrown just about anything and everything we can at our units, just to make sure we have the best designed and most thoroughly tested RVs in the world. Then we back them with a limited 1-year/3-year warranty supported by Fleetwood RV dealers throughout the U.S. and Canada. So you have what we believe to be the best-handling, safest, most comfortable RV anywhere.

Dear Friend,

Here at Fleetwood RV, we have over 200 people working on research and development. But we get our best ideas when we hit the road in our recreational vehicles. Talking to people like you and noticing for ourselves little ways to make RVing more comfortable, more convenient and more fun.



If I had two pieces of free advice to give a friend in the market for an RV, the first would be to get a Fleetwood RV. Not because we need to sell one more. Heck, we sell more than anyone else. But because I know we build the best product out there for the money.

Second, really think about your dealer. He has to be someone you trust for advice, service and accessories. Only the best get to be Fleetwood RV dealers in the first place. Then we work with them to continually improve customer satisfaction. That's why 9 out of 10 owners would recommend their Fleetwood RV to a friend and 9 out of 10 of them would also recommend their Fleetwood RV dealer.

I hope that helps. And I also hope I see you out there, somewhere in this beautiful world, enjoying your new Fleetwood RV while I'm out there doing the same.

John C. Crean

Chairman Emeritus and Founder
Fleetwood Enterprises, Inc.

Your local Fleetwood RV dealer is:

If your local dealer is not indicated, write to the address below; or call us toll free 24 hours a day at 1-800-444-4905. Or visit our Website at <http://www.fleetwood.com>

FLEETWOOD RV
America's Favorite Recreational Vehicles

Fleetwood Enterprises, Inc.
P.O. Box 2875, Van Nuys, CA 91404-2875

Product information and photography included in this brochure were as accurate as possible at the time of publication. Subsequent refinements may be evident in the actual product. Prices and specifications are subject to change without notice. All fuel and liquid capacities are approximate and dimensions are nominal. Fleetwood has designed its motor home brands to provide a variety of potential uses for its customers. Each unit features the optimum storage, fluid, seating and sleeping capabilities. Though the customer enjoys this potential, he/she also has the responsibility to select the proper combinations of loads without exceeding the chassis weight capacities.